

# BETI BACHAO BETI PADHAO SCHEME

## IMPLEMENTATION GUIDELINES

FOR STATE GOVERNMENTS / UT ADMINISTRATIONS

FEBRUARY 2018



नए समाज की ओर  
Towards a new dawn

**Ministry of Women and Child Development**

**Government of India**

**New Delhi**

## TABLE OF CONTENTS

| Sl. No | Contents   | Page No.   |
|--------|--|------------|
|        | <b>GLOSSARY</b>  | <b>3-4</b> |
| 1      | Introduction   | 5          |
| 2      | Purpose of the implementation guidelines   | 5          |
| 3      | Objectives   | 5          |
| 4      | Target groups  | 6          |
| 5      | Selection of Districts   | 6          |
| 6      | Components   | 7          |
| 7      | Monitorable Targets  | 7          |
| 8      | Strategies   | 8          |
| 9      | Modalities of Scheme   | 8          |
| 10     | Steps to be taken by State Governments/UT Administrations  | 12         |
| 11     | Monitoring and Supervision   | 13         |
| 12     | Administration of Scheme   | 14         |
| 15     | Financial Management   | 15         |
| 16     | Reporting  | 16         |
| 17     | Evaluation   | 18         |
| 18     | Audit and Social audits  | 18         |
| 19     | <b>List of Annexures</b>   |            |
|        | Annexure-I : List of 161 districts   | 19-22      |
|        | Annexure-II : List of 244 districts  | 23-29      |
|        | Annexure- III : List of 235 districts  | 30-35      |
|        | Annexure- IV : Component and year wise details of the estimated cost                               | 36         |
|        | Annexure- V : Central level Component  | 37         |
|        | Annexure- VI : District level Component  | 38         |
|        | Annexure- VII : District level norms   | 39-40      |
|        | Annexure-VIII: Procedure to be followed to register under PFMS for transfer of GIA for BBBP Scheme | 41-43      |
|        | <b>Annexure-IX : Guidelines for District Collectors/ Deputy Commisioners</b>                       | 44-95      |
|        | Annexure- X : Preliminary Information on the implementation of BBBP Scheme at District level       | 96-97      |
|        | Annexure-XI : Quarterly Progress Report of BBBP programme  | 98-105     |
|        | Annexure-XII : Format for U.C, SOE, Physical Progress Report                                       | 106-110    |

## GLOSSARY

|           |  |
|-----------|--|
| AWW       | Aanganwadi worker                                |
| ASHA      | Accredited Social Health Activists               |
| ANM       | Auxiliary Nursing & Midwife                      |
| BBBP      | Beti Bachao Beti Padhao                          |
| BTF       | Block Task Force                                 |
| CSR       | Child Sex Ratio                                  |
| CSO       | Civil Society Organization                       |
| DAP       | District Action Plan                             |
| DLSA      | District Legal Services Authority                |
| DTF       | District Task Force                              |
| IEC       | Information Education Communication              |
| ICDS      | Integrated Child Development Scheme              |
| ICPS      | Integrated Child Protection Scheme               |
| KGBV      | Kasturba Gandhi Balika Vidyalayas                |
| MCPC      | Mother and Child Protection Card                 |
| MSK       | Mahila Shakti Kendra                             |
| MHFW      | Ministry of Health and Family Welfare            |
| MHRD      | Ministry of Human Resource Development           |
| MWCD      | Ministry of Women and Child Development          |
| NGO       | Non Government Organisation                      |
| NHM       | National Health Mission                          |
| NRLM      | National Rural Livelihood Mission                |
| NTF       | National Task Force                              |
| PC & PNDT | Pre-Conception & Pre-Natal Diagnostic Techniques |
| PHC       | Primary Health Centre                            |
| PMU       | Programme Management Unit                        |
| POSCO     | Protection of Children from Sexual Offences      |

|       |  |
|-------|--|
| PRI   | Panchayati Raj Institutions                        |
| RTE   | Right To Education                                 |
| SAA   | State Appropriate Authority                        |
| SHG   | Self Help Group                                    |
| SG    | State Government                                   |
| SMC   | School Management Committees                       |
| SSA   | Sarva Shiksha Abhiyan                              |
| SSE   | Sex Selective Elimination                          |
| SRCW  | State Resource Centre for Women                    |
| SRB   | Sex Ratio at Birth                                 |
| STF   | State Task Force                                   |
| TSC   | Total Sanitation Campaign                          |
| UEE   | Universalization of Elementary Education           |
| UT    | Union Territory                                    |
| VHND  | Village Health & Nutrition Day                     |
| VHSNC | Village Health Sanitation and Nutrition Committees |

# **BETI BACHAO BETI PADHAO SCHEME**

## **1. INTRODUCTION**

1.1 The Census (2011) data showed a significant declining trend in the Child Sex Ratio<sup>1</sup> (CSR) between 0-6 years with an all time low of 918. The issue of decline in the CSR is a major indicator of women disempowerment as it reflects both, pre-birth discrimination manifested through gender biased sex selection, and post birth discrimination against girls (in form of their health, nutrition, educational needs). The principal factor behind the Child Sex Ratio being so adverse is the low Sex Ratio at Birth (SRB)<sup>2</sup>. Social construct discriminating girls on the one hand, easy availability, affordability and subsequent misuse of diagnostic tools on the other hand, have been critical in declining CSR. The strong socio-cultural and religious biases, preference for sons and discrimination towards daughters has accentuated the problem.

1.2 The sharp decline as pointed by Census 2011 data is a call for urgent action, as it highlights that the girl child is increasingly being excluded from life itself. Coordinated and convergent efforts are needed to ensure survival, protection and education of the girl child. In this background, *Beti Bachao Beti Padhao* (BBBP) Scheme was launched by the Hon'ble Prime Minister on 22<sup>nd</sup> January, 2015 in Panipat, Haryana to address the issue of decline in CSR and related issues of empowerment of girls and women over a life cycle continuum. The scheme was initially launched in 100 districts in 2014-15, and was expanded to 61 additional districts in 2015-16. Following initial success of the scheme, the initiative has been expanded to all 640 districts of the Country (as per Census 2011) through a nation-wide mass media campaign, and focussed intervention and multi-sectoral action in select districts.

## **2. PURPOSE OF IMPLEMENTATION GUIDELINES**

2.1 The purpose of these guidelines is to serve as a reference material with all necessary practical information on the components of BBBP and how to implement, monitor and report it at various levels. These are also intended to serve as an effective reference manual for officials at the National and State / Union Territory (UT) levels for policy guidance and monitoring. The Guidelines cover key components of the Scheme as well as modalities of implementation. It also lays down monitoring and reporting formats to be used at different levels. It is expected that these guidelines will be used by the target audience as a reference material for understanding scheme strategy and its processes. It will also help them to ensure effective implementation of the Scheme at all levels. The guidelines are not exhaustive and the feedback received from States/UTs from time to time will be incorporated as per requirements.

## **3. OBJECTIVES:**

3.1 The Overall Goal of the Beti Bachao Beti Padhao (BBBP) Scheme is to celebrate the girl child and enable her education. The objectives of the Scheme are as under:

---

<sup>1</sup>Child Sex Ratio is defined as number of girls per 1000 of boys between 0-6 years of age.

<sup>2</sup>Sex Ratio at Birth is defined as number of girls born per 1000 boys born

- i. To prevent gender biased sex selective elimination
- ii. To ensure survival and protection of the girl child
- iii. To ensure education and participation of the girl child

#### 4. TARGET GROUPS

|                  |   |
|------------------|---|
| <b>Primary</b>   | Young and newly married couples; Pregnant and Lactating mothers; parents  |
| <b>Secondary</b> | Youth, adolescents (girls and boys), in-laws, medical doctors/ practitioners, private hospitals, nursing homes and diagnostic centres   |
| <b>Tertiary</b>  | Officials, PRIs; frontline workers, women SHGs/Collectives, religious leaders, voluntary organizations, media, medical associations, industry associations, general public as a whole |

#### 5. SELECTION OF DISTRICTS

- i) In Phase-I (Year 2014-15), the Scheme was started in 100 districts for focussed intervention and multi-sectoral action. These districts were identified on the basis of low Child Sex Ratio as per Census 2011 covering all States/UTs as a pilot with at least one district in each state. The criteria/norms for selection/identification of first 100 districts in Phase-I are as under :-
  - 87 Districts have been selected from 23 States/UTs having Child Sex Ratio below the National average of 918.
  - 8 Districts have been selected from 8 States/UTs having Child Sex Ratio above National average of 918 but showing declining trend.
  - 5 Districts have been selected from 5 States/UTs having Child Sex Ratio above National average of 918 and showing improving trend so that other parts of country can learn from them.
- ii) In Phase-II (Year 2015-16), the Scheme was expanded in additional 61 districts covering 11 States for creating awareness and advocacy about the issue taking into account the criticality of the issue and performance of the scheme on ground.
- iii) In this short duration, BBBP has been well-received and favourable trends are visible in many of the districts. The scheme has been successful in establishing the improvement in Child Sex Ratio as a National Agenda. Based on the successful implementation in 161 districts, the Cabinet has approved the expansion of BBBP which would include Multi-sectoral intervention in 244 districts (in addition to existing 161 districts) and Alert District Media, Advocacy and Outreach in 235 districts, thus covering all the 640 districts (as per census 2011) of the Country to have a deeper positive impact on Child Sex Ratio.

The list of 161 districts - selected under BBBP in Phase-I and Phase-II is placed at **Annexure-I**. List of Districts selected under Pan India expansion for Multi-sectoral Action (244 districts) and Alert Media Advocacy and Outreach (235 districts) is placed at **Annexure-II** and **Annexure-III**.

## 6. COMPONENTS

**6.1 Advocacy and Media Campaign on Beti Bachao-Beti Padhao:** Under the Scheme, a Nation-wide campaign was launched for celebrating Girl Child and enabling her education. The campaign aims at ensuring that girls are born, nurtured and educated without discrimination to become empowered citizens of this country with equal rights. A 360° media approach is being adopted to create awareness and disseminating information about the issue across the nation. This includes radio spots/ jingles in Hindi and regional languages, television publicity, outdoor and print media, community engagement through mobile exhibition vans, social media and field publicity. Awareness generation through SMS campaigns, Mailers, Hand-outs, Brochures and other IEC material in English, Hindi and regional languages is to be adopted. Social Media Platforms are being used such as MyGov, Vikaspedia, Website of Ministry of Women and Child Development, Facebook, Youtube etc.

**6.2 Multi-Sectoral intervention in selected Gender Critical Districts worse on CSR:** Under the Scheme, the multi-sectoral action in selected 405 districts (including existing 161 districts) covering all States/UTs will focus on schematic intervention and sectoral actions in consultation with M/o H&FW & M/o HRD. Measurable outcomes and indicators will bring together concerned sectors, states and districts for urgent concerted multi-sectoral action to improve the CSR. A flexible framework for multi-sectoral action will be adapted and contextualized by State Task Forces for developing, implementing and monitoring State/ District Plans of Action to achieve the State Specific Monitorable Targets. State/ Districts will similarly develop their plans responsive to different State/District contexts.

## 7. MONITORABLE TARGETS

- i) Improve the Sex Ratio at Birth (SRB) in selected gender critical districts by 2 points in a year.
- ii) Reduce Gender differentials in Under Five Child Mortality Rate from 7 points in 2014(latest available SRS report) to 1.5 points per year
- iii) At least 1.5 % increase per year of Institutional Deliveries.
- iv) At least 1% increase per year of 1<sup>st</sup> Trimester ANC Registration.
- v) Increase enrolment of girls in secondary education to 82% by 2018-19.
- vi) Provide functional toilet for girls in every school in selected districts.
- vii) Improve the Nutrition status of girls - by reducing number of underweight and anemic girls under 5 years of age.
- viii) Ensure universalization of ICDS, girls' attendance and equal care monitored, using joint ICDS NHM Mother Child Protection Cards.
- ix) Promote a protective environment for Girl Children through implementation of Protection of Children from Sexual Offences (POCSO) Act 2012.
- x) Train Elected Representatives/ Grassroot functionaries as Community Champions to mobilize communities to improve CSR and promote Girl's education.

## 8. STRATEGIES

As the issue of decline in Child Sex Ratio is complex and multi-dimensional, a multi- sectoral strategy which is governed by the core principles of respecting, protecting and fulfilling the rights of girls and women, including the ending of gender discrimination and violence will be adopted. The core strategies will be as follows:

- i) Implementing a sustained Mass Media Advocacy Outreach Campaign with a 360° media approach to create equal value for the girl child and promote her education.
- ii) Placing the issue of decline in CSR/SRB in public discourse, improvement of which would be an indicator of gender balance.
- iii) Focusing on Districts and Cities low on CSR for intensive and integrated action.
- iv) Adopting Innovative Interventions/Actions by the districts as per their local needs, context and sensibilities.
- v) Strengthening capacities of Panchayati Raj Institutions/Urban local bodies/ Elected Representatives/Grassroot workers as catalysts for social change, in partnership with local community/women's/youth groups.
- vi) Engaging with Communities to challenge gender stereotypes and challenge social norms.
- vii) Facilitating service delivery structures/schemes and programmes are sufficiently responsive to issues of gender and children's rights.
- viii) Enabling Inter-sectoral and inter-institutional convergence at District/Block/ grassroot levels.

## 9. MODALITIES OF SCHEME

### 9.1 Convergence with Line Ministries/Departments

Implementation of BBBP requires linkages for convergent action with concerned Ministries/Departments for policy and programmatic interventions, training and capacity building and communication. Further linkages will also be established with states and district administration for implementation.

| Ministry/<br>Department                                | Role and Responsibilities   |
|--|---|
| <b>Ministry of Women and Child Development (MoWCD)</b> | <p><b>National level</b></p> <ol style="list-style-type: none"> <li>i. Provide overall guidance and support to States/UTs/Districts and other stakeholders in implementation of BBBP.</li> <li>ii. Provide overall administration of the scheme.</li> <li>iii. Collate best practises/ initiatives on creating value of girl child.</li> <li>iv. Undertake Training/Sensitization &amp; Orientation of officials, functionaries and stakeholders.</li> <li>v. Undertake National advocacy and media outreach campaign</li> <li>vi. Development of Online Management Information System (MIS) for reporting and monitoring.</li> <li>vii. Protection of Children from Sexual Offences (POCSO) Act 2012 notified: National and State Specific Guidelines issued.</li> </ol> |



|   |   |
|---|---|
| <p><b>Department of Women and Child Development/Social Welfare</b></p>  | <ul style="list-style-type: none"> <li>i. Facilitate and provide guidance to the districts for implementation of BBBP.</li> <li>ii. Convene State Task Force Meetings on a regular basis, ensure progress on intermediary targets.</li> <li>iii. Establish convergence on BBBP with other partner departments such as Health, Education, PRI/ULBs, Rural Development, and Registrar General of India (RGI) etc.</li> <li>iv. Strengthen linkages with other women oriented schemes and programmes.</li> <li>v. Facilitate Training of Master Trainers and ensure training is imparted by the districts to the existing network of AWWs/ASHAs and other functionaries.</li> <li>vi. Identify local champions at all levels for creating awareness about the issue concerning women and girl child.</li> <li>vii. Reward &amp; Recognize good performing districts, block, panchayats, grassroot workers and local champions.</li> <li>viii. Undertake innovative initiatives at state level to draw attention to equal value of girl child.</li> <li>ix. Ensure State specific/local thematic issues are addressed alongwith CSR.</li> </ul> <p><b>Note:</b> State Resource Centre for Women (SRCW) under Mahila Shakti Kendra scheme to function as Programme Management Unit (PMU) to provide technical and coordination support for BBBP.</p> |
|   | <p><b>District level</b><br/>The detailed guidelines for scheme implementation may be seen at at <b>Annexure-IX: Guidelines for District Collectors/ Deputy Commisioners</b> (Page 44-95)</p>   |
| <p><b>Ministry of Health &amp; Family Welfare (MoHF&amp;W)</b></p>      | <p><b>Effective Implementation of Pre-Conception &amp; Pre-natal Diagnostic Techniques (PC&amp;PNDT) Act</b></p> <p><b>National level</b></p> <ul style="list-style-type: none"> <li>i. Central Supervisory Board (CSB) and to Ensure regular meetings of Central Supervisory Board (CSB)</li> <li>ii. Two national meeting per year to review the implementation of PC&amp; PNDT Act</li> <li>iii. Five regional review meetings</li> <li>iv. National Inspection and Monitoring Committee Visits (24 visits in a year )</li> <li>v. National Capacity Building workshop of State Appropriate Authorities and State Nodal Officers</li> <li>vi. National Capacity Building workshop for NIMC members</li> <li>vii. Orientation program for the State Appropriate Authorities and State Nodal Officers on new amendments to the PC&amp;PNDT Rules</li> </ul>  |
| <p><b>Department of Health and Family Welfare, State Government</b></p> | <p><b>State level</b></p> <ul style="list-style-type: none"> <li>i. Constitution/ reconstitution of State supervisory Board, Multimember State appropriate Authority and State Advisory Committee and ensure regular meetings.</li> <li>i. Strengthening of the state PNDT cell (through the funds of</li> </ul>  |

|  |   |
|--|---|
|  | <p>Health Department).</p> <ul style="list-style-type: none"> <li>ii. Review meetings and field inspections and monitoring in every three months of the selected districts.</li> <li>iii. Setting up of Inspection targets for the state inspection committees.</li> <li>iv. Orientation and sensitisation of the judiciary at state and district level through State Judicial Academies to ensure speedy decisions on the pending PNDT cases.</li> <li>v. Setting up of a dedicated legal cell at the state level to ensure adequate and prompt defending of all the ongoing PNDT court cases and timely filing of appeals. The state coordinator of the legal cell may be a retired magistrate or the district judge with at least four lawyers with adequate office support.</li> <li>vi. Analysis, monitoring of all the on-going PNDT court cases pending in the district courts and updating of information (including the most crucial interventions required in each case) at the district level by state legal consultant</li> <li>vii. Follow-up with Registrars of Supreme Court/ High Court for disposal of PNDT cases with review by PMO</li> <li>viii. Timely communication to the State Medial Council in case of conviction or charge sheet is secured against any medical doctor to ensure suspension/ cancellation of medical license.</li> </ul>   |
| <p><b>Department of Health, District level</b></p> | <p>The collectors /DMs may ensure the following through the Health Department:</p> <ul style="list-style-type: none"> <li>i. 100% registration of births in the district especially through Civil Registration System (CRS).</li> <li>ii. Monitoring the Sex Ratio at Birth, block /GP/ Municipality wise through birth registration data to identify and develop focused action plan for more affected areas of the district.</li> <li>iii. All pregnancies are registered and complete ANC and post Natal services are provided to all women.</li> <li>iv. All statutory bodies as District Advisory Committees under the PC&amp;PNDT Act are constituted/ reconstituted and meetings are conducted at intervals mandated by the Act.</li> <li>v. The formulation of District Inspection and Monitoring Committees for conducting regular inspections and monitoring of the registered bodies under the Act.</li> <li>vi. Registration of all Genetic Laboratories, Genetic Counseling Centre and Genetic Clinics including IVF centres conducting pre-conception and pre-natal diagnostic counseling, test, procedure having potential for sex selection before/ after conception.</li> <li>vii. Maintenance of a comprehensive and detailed data base of the complaints / registrations/ renewals/ court cases/ convictions/ suspensions/ cancellations/ make and model of diagnostic equipment used in the diagnostic clinics, name and qualification of doctors conducting the diagnostic procedures/ test in the district for better monitoring and regulation.</li> </ul> |

|  |  |
|--|--|
|  | <ul style="list-style-type: none"> <li>viii. Regular surveys of diagnostic centres (Genetic laboratories, Genetic Counseling Centres, Genetic Clinics/ Imaging Centres/ Ultrasound Clinics) capable of detecting/ determine the sex of the foetus to identify unregistered facilities.</li> <li>ix. Maintenance and timely submission of the records by the registered facilities as prescribed under the PC&amp;PNDT Act on 5<sup>th</sup> of the following month and analyze/ audit the record for effective monitoring and regulation.</li> <li>x. Conducting decoys to unearth the illegal practice of sex selection in the District and coordinate with the neighboring District Appropriate Authorities to track inter district networks involved in illegal practice of sex selection.</li> <li>xi. Develop intelligence by instituting rewards for the informers.</li> <li>xii. Follow up of court cases pending under the PC&amp;PNDT Act and ensure the attendance of District Appropriate Authority or person authorities on his/ her behalf in every hearing of the court case.</li> <li>xiii. Communication of the names of all the convicted doctors in the district to the Medical Council for necessary action under Section 23 (2) of the PC&amp;PNDT Act.</li> <li>xiv. Training of medical officers for conducting diagnostic procedures in Government facilities to ensure effective complete compliance of PNDT Act.</li> <li>xv. Sensitization of all frontline workers (Health &amp;WCD) towards girl child to ensure all Health and nutritional needs of Girl Child and to promote the special benefits provided to girl child through various programmes and schemes.</li> <li>xvi. Set up a functional anonymous complaint portal or platform.</li> <li>xvii. Utilization of the registration fee collected under the PC&amp;PNDT Act for the effective implementation and monitoring of the Act.</li> <li>xviii. Submission of regular monthly report on the status of implementation of PC&amp;PNDT Act to the State Appropriate Authorities to help timely compilation of Quarterly Progress Reports for the State/ UT.</li> <li>xix. Bimonthly review meetings under the chairmanship of Districts Collector/ Magistrate.</li> </ul> |
| <b>Ministry of Human Resource Development (MoHRD)- Department of School Education and Literacy</b> | <ul style="list-style-type: none"> <li>i. Activate School Management Committees (SMCs) to ensure universal enrolment, retention and completion of secondary education of girls.</li> <li>ii. Create Forums to encourage participation of girls through Balika Manch.</li> <li>iii. Construction and ensuring of functional toilet for girls .</li> <li>iv. Completion of Kasturba Gandhi Bal Vidyalayas.</li> </ul>  |

|  |  |
|--|--|
|  | <ul style="list-style-type: none"> <li>v. Campaign to re-enroll drop-out girls in secondary schools.</li> <li>vi. Construction of girls hostels for secondary and senior secondary schools.</li> <li>vii. Sensitization of teachers on Child Sex Ratio through Sarva Shiksha Abhiyan.</li> <li>viii. Institutionalize standard guidelines/ protocols for Girl Child Friendly Schools including residential schools and ensure its effective implementation.</li> <li>ix. Institute district level awards for feliciating girl-achievers, and special award for meritorious girls.</li> </ul> |
|--|--|

**9.2 Convergence with other Line Ministries/Departments:** Linkages with partner Ministries and line Departments such as Panchayati Raj, Urban Local Bodies, Youth Affairs and Sports, Skill Development Mission, Registrar General of India (RGI) to be strengthened.

**9.3 Engagement with other stakeholders:** Engagement with local NGOs, CBOs, Civil Society Groups, Women’s Organizations working on the issue of Gender, Child Sex Ratio, and Education will be established. Linkages will be strengthened with the schools, colleges, professional colleges and universities to run sensitization campaigns on value of girl child and enable her education. The scope and role of local CSOs may be worked out mutually through consultations with District Administration.

**9.4** Linkages will be explored with corporates to leverage and mobilize resources under Corporate Social Responsibility (CSR) in addressing issue on case to case basis.

## **10. STEPS TO BE TAKEN BY STATE GOVERNMENTS / UT ADMINISTRATIONS**

10.1 States will form a **State Task Force (STF)** headed by the Chief Secretary to coordinate the Multi-Sectoral implementation of the Scheme. In UTs, the Task Force would be headed by Administrator, UT Administration.

10.2 Ensure meetings of STF at least twice in a year.

10.3 State will ensure formation of District Task Force (DTF) headed by Collector/Deputy Commissioner.

10.4 State Government/UT Administration will review the expenditure and performance of the Districts on key monitorable targets on a regular basis.

10.5 The State/UTs Government will facilitate trainings, initiate awareness generation activities and advocacy for changing the mind set of people. The Information Education and Communication materials will be used for wider dissemination and visibility of the issue.

## 11. MONITORING AND SUPERVISION

Monitoring of the BBBP Scheme would be at following levels:

11.1 **At National level**, a **National Task Force (NTF)** for Beti Bachao Beti Padhao headed by Secretary, WCD with representation from concerned ministries namely Ministry of Health & Family Welfare, Ministry of Human Resource Development, National Legal Services Authority, Department of Disability Affairs and Ministry of Information and Broadcasting, Gender Experts and Civil Society representatives. The Task Force will provide national level guidance and support; finalize training content; review state plans and monitor effective implementation. The NTF will meet on a bi-annual basis to review the implementation of the Scheme.

11.2 Ministry of Women and Child Development is the nodal Ministry for the implementation and monitoring of the scheme. Concerned ministries would be responsible for ensuring relevant sectoral inputs for the effective implementation. MWCD will have the responsibility of coordinating the implementation of the scheme through the BBBP Division. A Programme Management Unit (PMU) will be created under BBBP to provide technical inputs and support to BBBP Division for the implementation, coordination and monitoring of the Scheme. Secretary, WCD may cause minor changes in BBBP guidelines for operational exigencies in needed cases without affecting basic aim, object and substance of BBBP and without additional financial implication.

11.3 **At the State level**, the States shall form a **State Task Force (STF)** with representation of concerned Departments including State Level Services Authority and Department of Disability Affairs for Beti Bachao, Beti Padhao to coordinate the Multi-Sectoral implementation of the Scheme. As the issue requires convergence and coordination between Departments, the Task Force would be headed by the Chief Secretary. In UTs the Task Force would be headed by Administrator, UT Administration. Some States/UTs have their own mechanism at the State/UT level for Women's Empowerment, Gender and Child related issues which may be considered and/or strengthened as State/UT Task Force. Principal Secretary, WCD/Social Welfare will be the convenor of this body. Department of Women and Child Development will have the responsibility of coordinating all the activities related to implementation of the Scheme in the State/UTs through the Directorate of ICDS/ MSK (Mahila Shakti Kendra). State Resource Centre for Women (SRCWs), institutions under the MSK Scheme wherever functional, will function as PMU to provide technical and coordination support for implementation and monitoring of the State action plan. The STF will meet at least twice in a year to review and assess the progress on intermediary targets achieved by the districts.

11.4 **At the District level**, a **District Task Force (DTF)** led by the District Collector/Deputy Commissioner with representation of Departments like Health, Education, and other concerned departments such as District Legal Services Authority, Police. The DTF will be responsible for effective implementation, monitoring and supervision of the District Action Plan (DAP). Technical support and guidance for the formulation and implementation of Action Plan in the district would be provided by District Programme

Officer (DPO) in the District ICDS Office using the Block level Action Plans. They shall also undertake monthly review of the progress on the activities listed in the Department Plans of action at the district level. MSK/District Level Centres for Women (DLCW), wherever functional, will act as PMU to provide technical and co-ordination support to DC/DM on implementation of BBBP.

11.5 **At the Block level**, a Block level Committee would be set up under the chairpersonship of the Sub Divisional Magistrate/Sub Divisional Officer/Block Development Officer (as may be decided by the concerned District Administration) to provide support in effective implementation, monitoring and supervision of the Block Action Plan. The College Student Volunteers under MSK (in 115 selected backward districts) will sensitize and create awareness in the community on BBBP.

11.6 **At the Gram Panchayat/Ward level**, the respective Panchayat Samiti/Ward Samiti (as may be decided by concerned State Governments) having jurisdiction over the concerned Gram Panchayat/Ward would be responsible for the overall coordination and supervision for effectively carrying out activities under the Plan with technical support of DLCW-Coordinator. **At Village level**, Village Health Sanitation and Nutrition Committees, (recognized as sub committees of panchayats) will guide and support village level implementation and monitoring of the plan.

## **12. ADMINISTRATION OF SCHEME**

12.1 Beti Bachao Beti Pado Scheme is a Central Sector Schemes (CSS), implemented through State Governments/UTs through District Collectors/District Magistrates. GoI will provide 100 percent assistance for the implementation of the BBBP Scheme to the District Collectors. The Ministry of Women and Child Development (WCD) will be responsible for budgetary control and administration of the Scheme from the Centre. At the State/UT level, the Secretary of the Department of WCD will be responsible for the overall implementation of the Scheme along with the Director and other officers.

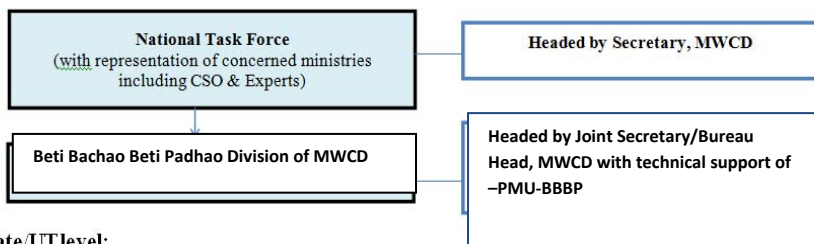
12.2 DPO at district level will be nodal officer for the implementation of the Scheme.

12.3 The scheme will be implemented through ICDS platform/MSK/DLCW at district, block and village level in convergence with Health, Education and Panchayati Raj Ministry.

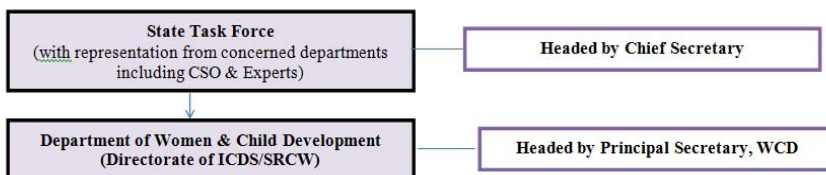
12.4 The State component will be administered and supported under MSK scheme.

The flow chart of the administrative set for implementation of the Scheme at various levels is as under;

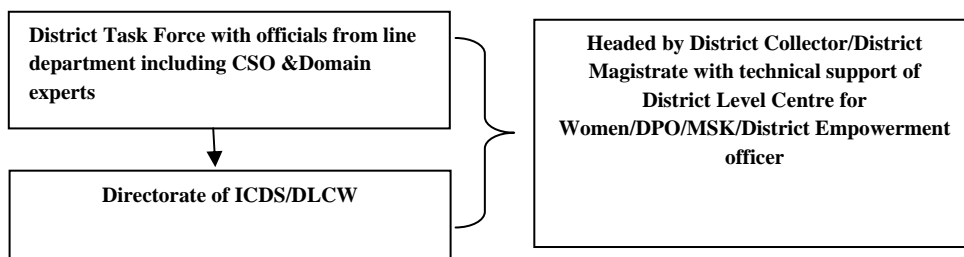
**National Level:**



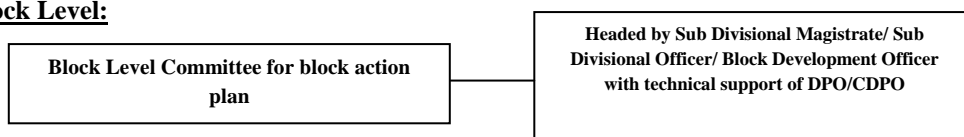
**State/UT level:**



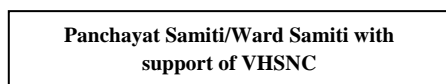
**District Level:**



**Block Level:**



**Gram Panchayat / Ward Level:**



**13. FINANCIAL MANAGEMENT:** In terms of the Integrated Finance Division, MWCD's OM dated 8<sup>th</sup> July 2016 communicating restructuring of the plan schemes as per Ministry of Finance D.O. letter NO. 66(01)/PF. II/2015 dated 18.4.2016.

13.1 Beti Bachao Beti Padhao(BBBP) scheme shall be operated/implemented under the Centrally Sponsored Umbrella Scheme namely, Mission for Protection and Empowerment for Women with 100% financial assistance for District Level component of the scheme. The Grant in Aid(GIA) shall be released by the Ministry of Women and Child Development, Government of India (GoI) directly to the District Collector/District Magistrate of the selected district.

13.2 The component –wise requirement of funds for the year 2017-18, 2018-19 & 2019-20 is at **Annexure- IV** which reflects a total requirement of **Rs. 1132.5 Crore**. The component wise budget allocation for Central level is at **Annexure-V**; District level component at **Annexure- VI** alongwith the **district level norms** at **Annexure-VII**.

13.3 The District Authorities shall have a separate designated BBBP Account operated by District Collector/ District Magistrate for implementing the scheme at the grassroots level. The details of the bank account open (name of the bank, branch, account number, address) along with IFSC Code, Mobile Number, may be intimated to this Ministry for transfer of funds through Public Financial Management System (PFMS). The details related to PFMS registration, performa and mandate form is placed at **Annexure VIII**.

13.4 The funds to the District Collector/ District Magistrate shall be released in two installments as per the proposals received from the respective Districts for District level activities as per the BBBP scheme guidelines.

13.5 District Action Plans (DAP) shall be prepared by DC/DM of the concerned District and shall be shared with Department of WCD/Social Welfare and Ministry of WCD, Government of India. The approval of DAP will be conveyed by the WCD Ministry.

13.6 Monitoring/review to be done by State WCD department/ Social Welfare department through State Resource Center for Women (SRCW) wherever it exists.

13.7 The District Collector/District Magistrate shall furnish the UC, SoE and Physical Progress Report directly to the MWCD (with a copy marked to the Principal Secretary, Deptt. Of WCD/Social Welfare of the respective State Govt./UT Admin.) in respect of the expenditure incurred on implementation of the Scheme in the District.

13.8 Review of expenditure and performance to be done half yearly by State task force.

13.9 The districts have to submit the financial progress of expenditure and Physical report before the release of second installment of the financial year.

**Timelines for submission of reports:**

- i) Half yearly Progress of Expenditure along with Physical and financial reporting in prescribed formats will be sent to GoI, by the following dates :
- **First half year ending 30th September** : **by 15th October**
  - **Second half year ending 31st March** : **by 15th April**

## **14. REPORTING**

To ensure accountability and for service improvement, it is important to document all activities conducted at the District, Block and Gram Panchayat Level, related to the Scheme and Campaign.

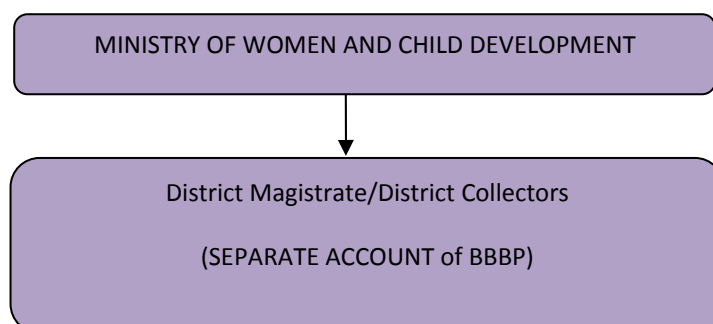
- i) DPO may be designated as the Coordinating Officer by the DTF who will be responsible for coordinating with the Nodal Officers from Health and Education departments. The Coordinating Officer will collate and compile the monthly reports for submission to the MWCD with copy to State Governments.



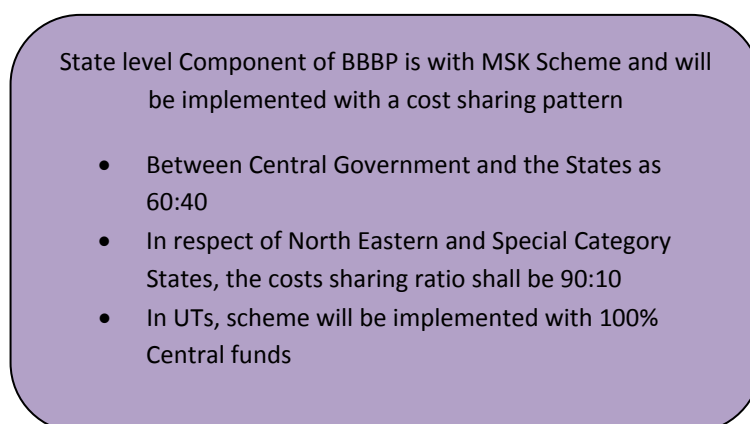
- ii) A Nodal Officer from each Department for formulation would be nominated for implementation and monitoring of District Action Plans under overall supervision of DC/DM.
- iii) Regular process of documentation of all activities conducted at the District, Block and Gram Panchayat Level, related to the Scheme and Campaign will be undertaken through regular reports, MIS and photographic documentation at the district level.
- iv) The qualitative progress should be well documented through case studies, good practices, innovations and be supplemented through photographs.
- v) At the District level, the online monthly progress report shall be furnished by nodal officer (DPO, ICDS). The Nodal Officer of Department of health (part B) and Education (part C) are responsible to provide information as per the MIS.
- vi) The quarterly reporting format is to be submitted to this Ministry on a quarterly basis as prescribed in **Annexure XI**.
- vii) The Districts have to submit utilization certificate (UC), SoE and annual physical report against the release of the fund for the previous Financial Year. The Format for U.C, S.O.E, and Physical Progress Report is at **Annexure-XII (Part A, Part B, Part C)**.

## DIAGRAMATIC REPRESENTATION OF FUND FLOW

### A.) DISTRICT COMPONENT-BBBP



### B.) STATE COMPONENT-BBBP (Under MSK Scheme)



## **15. EVALUATION**

- i) Evaluation of the scheme by independent agency will be conducted in consultation with NITI Aayog.
- ii) The formats and methodology for the surveys/concurrent evaluation mechanism would be devised by the GOI to maintain uniformity.

## **16. AUDIT AND SOCIAL AUDIT**

- i) Audit shall be done as per Comptroller and Auditor General of India norms and that channel will be followed at the Central and State Government levels.
- ii) Social Audit will also be undertaken which will be conducted by Civil Society Groups to obtain direct feedback from public and institutions involved in implementation of the scheme.

| <b>List of 161 districts of Beti Bachao Beti Padhao</b> |                           |                            |                    |                    |
|---|---------------------------|----------------------------|--------------------|--------------------|
| <b>SN</b>   | <b>Name of State / UT</b> | <b>Number of Districts</b> | <b>Census 2001</b> | <b>Census 2011</b> |
|   | <b>INDIA</b>              |                            | <b>927</b>         | <b>918</b>         |
| 1   | Gujarat (9)               | Surat                      | 859                | 835                |
| 2   |                           | Mahesana                   | 801                | 842                |
| 3   |                           | Gandhinagar                | 816                | 847                |
| 4   |                           | Ahmadabad                  | 835                | 857                |
| 5   |                           | Rajkot                     | 854                | 862                |
| 6   |                           | <b>Anand</b>               | 849                | 884                |
| 7   |                           | <b>Amreli</b>              | 892                | 886                |
| 8   |                           | <b>Patan</b>               | 865                | 890                |
| 9   |                           | <b>Bhavnagar</b>           | 881                | 891                |
| 10  | Haryana (20)              | Mahendragarh               | 818                | 775                |
| 11  |                           | Jhajjar                    | 801                | 782                |
| 12  |                           | Rewari                     | 811                | 787                |
| 13  |                           | Sonipat                    | 788                | 798                |
| 14  |                           | Ambala                     | 782                | 810                |
| 15  |                           | Kurukshetra                | 771                | 818                |
| 16  |                           | Rohtak                     | 799                | 820                |
| 17  |                           | Karnal                     | 809                | 824                |
| 18  |                           | Yamunanagar                | 806                | 826                |
| 19  |                           | Kaithal                    | 791                | 828                |
| 20  |                           | Bhiwani                    | 841                | 832                |
| 21  |                           | Panipat                    | 809                | 837                |
| 22  |                           | <b>Gurgaon</b>             | 807                | 830                |
| 23  |                           | <b>Jind</b>                | 818                | 838                |
| 24  |                           | <b>Faridabad</b>           | 847                | 843                |
| 25  |                           | <b>Hisar</b>               | 832                | 851                |
| 26  |                           | <b>Fatehabad</b>           | 828                | 854                |
| 27  |                           | <b>Sirsa</b>               | 817                | 862                |
| 28  |                           | <b>Panchkula</b>           | 829                | 863                |
| 29  |                           | <b>Palwal</b>              | 854                | 866                |
| 30  | Himachal Pradesh (3)      | Una                        | 837                | 875                |
| 31  |                           | <b>Kangra</b>              | 836                | 876                |
| 32  |                           | <b>Hamirpur</b>            | 850                | 887                |
| 33  | Jammu & Kashmir (15)      | Jammu                      | 819                | 795                |
| 34  |                           | Pulwama                    | 1046               | 829                |
| 35  |                           | Kathua                     | 847                | 831                |
| 36  |                           | Badgam                     | 963                | 832                |
| 37  |                           | Anantnag                   | 977                | 841                |
| 38  |                           | <b>Samba</b>               | 798                | 779                |
| 39  |                           | <b>Baramula</b>            | 961                | 863                |
| 40  |                           | <b>Ganderbal</b>           | 1014               | 863                |
| 41  |                           | <b>Rajouri</b>             | 905                | 865                |
| 42  |                           | <b>Srinagar</b>            | 983                | 865                |
| 43  |                           | <b>Shupiyan</b>            | 1011               | 878                |

|    |                    |                               |      |     |
|----|--------------------|-------------------------------|------|-----|
| 44 |                    | <b>Kupwara</b>                | 1021 | 879 |
| 45 |                    | <b>Kulgam</b>                 | 1003 | 885 |
| 46 |                    | <b>Udhampur</b>               | 912  | 886 |
| 47 |                    | <b>Bandipore</b>              | 967  | 892 |
| 48 | Madhya Pradesh (6) | Morena                        | 837  | 829 |
| 49 |                    | Gwalior                       | 853  | 840 |
| 50 |                    | Bhind                         | 832  | 843 |
| 51 |                    | Datia                         | 874  | 856 |
| 52 |                    | <b>Rewa</b>                   | 926  | 885 |
| 53 |                    | <b>Tikamgarh</b>              | 916  | 892 |
| 54 | Maharashtra (16)   | Bid                           | 894  | 807 |
| 55 |                    | Jalgaon                       | 880  | 842 |
| 56 |                    | Ahmadnagar                    | 884  | 852 |
| 57 |                    | Buldana                       | 908  | 855 |
| 58 |                    | Aurangabad                    | 890  | 858 |
| 59 |                    | Washim                        | 918  | 863 |
| 60 |                    | Kolhapur                      | 839  | 863 |
| 61 |                    | Osmanabad                     | 894  | 867 |
| 62 |                    | Sangli                        | 851  | 867 |
| 63 |                    | Jalna                         | 903  | 870 |
| 64 |                    | <b>Hingoli</b>                | 927  | 882 |
| 65 |                    | <b>Solapur</b>                | 895  | 883 |
| 66 |                    | <b>Pune</b>                   | 902  | 883 |
| 67 |                    | <b>Parbhani</b>               | 923  | 884 |
| 68 |                    | <b>Nashik</b>                 | 920  | 890 |
| 69 |                    | <b>Latur</b>                  | 918  | 889 |
| 70 | NCT of Delhi (7)   | South West                    | 846  | 845 |
| 71 |                    | North West                    | 857  | 865 |
| 72 |                    | East                          | 865  | 871 |
| 73 |                    | West                          | 859  | 872 |
| 74 |                    | North                         | 886  | 873 |
| 75 |                    | <b>North East</b>             | 875  | 880 |
| 76 |                    | <b>South</b>                  | 888  | 885 |
| 77 | Punjab (20)        | Tarn Taran                    | 784  | 820 |
| 78 |                    | Gurdaspur                     | 789  | 821 |
| 79 |                    | Amritsar                      | 792  | 826 |
| 80 |                    | Muktsar                       | 811  | 831 |
| 81 |                    | Mansa                         | 782  | 836 |
| 82 |                    | Patiala                       | 776  | 837 |
| 83 |                    | Sangrur                       | 784  | 840 |
| 84 |                    | Sahibzada Ajit<br>Singh Nagar | 785  | 841 |
| 85 |                    | Fatehgarh Sahib               | 766  | 842 |
| 86 |                    | Barnala                       | 792  | 843 |
| 87 |                    | Firozpur                      | 822  | 847 |
| 88 |                    | <b>Faridkot</b>               | 812  | 851 |
| 89 |                    | <b>Bathinda</b>               | 785  | 854 |
| 90 |                    | <b>Ludhiana</b>               | 817  | 860 |
| 91 |                    | <b>Moga</b>                   | 818  | 860 |
| 92 |                    | <b>Rupnagar</b>               | 799  | 863 |

|     |                    |                                  |     |     |
|-----|--------------------|----------------------------------|-----|-----|
| 93  |                    | <b>Hoshiarpur</b>                | 812 | 865 |
| 94  |                    | <b>Kapurthala</b>                | 785 | 871 |
| 95  |                    | <b>Jalandhar</b>                 | 806 | 874 |
| 96  |                    | <b>Shahid Bhagat Singh Nagar</b> | 808 | 885 |
| 97  | Rajasthan (14)     | Jhunjhunun                       | 863 | 837 |
| 98  |                    | Sikar                            | 885 | 848 |
| 99  |                    | Karauli                          | 873 | 852 |
| 100 |                    | Ganganagar                       | 850 | 854 |
| 101 |                    | Dhaultpur                        | 860 | 857 |
| 102 |                    | Jaipur                           | 899 | 861 |
| 103 |                    | Dausa                            | 906 | 865 |
| 104 |                    | Alwar                            | 887 | 865 |
| 105 |                    | Bharatpur                        | 879 | 869 |
| 106 |                    | Sawai Madhopur                   | 902 | 871 |
| 107 |                    | <b>Jaisalmer</b>                 | 869 | 874 |
| 108 |                    | <b>Hanumangarh</b>               | 872 | 878 |
| 109 |                    | <b>Jodhpur</b>                   | 920 | 891 |
| 110 |                    | <b>Tonk</b>                      | 927 | 892 |
| 111 | Uttar Pradesh (21) | Baghpat                          | 850 | 841 |
| 112 |                    | Gautam Buddha Nagar              | 854 | 843 |
| 113 |                    | Ghaziabad                        | 854 | 850 |
| 114 |                    | Meerut                           | 857 | 852 |
| 115 |                    | Bulandshahr                      | 867 | 854 |
| 116 |                    | Agra                             | 866 | 861 |
| 117 |                    | Muzaffarnagar                    | 859 | 863 |
| 118 |                    | Mahamaya Nagar                   | 886 | 865 |
| 119 |                    | Jhansi                           | 886 | 866 |
| 120 |                    | Mathura                          | 872 | 870 |
| 121 |                    | <b>Etawah</b>                    | 895 | 875 |
| 122 |                    | <b>Aligarh</b>                   | 886 | 877 |
| 123 |                    | <b>Etah</b>                      | 880 | 879 |
| 124 |                    | <b>Firozabad</b>                 | 887 | 881 |
| 125 |                    | <b>Jalaun</b>                    | 889 | 881 |
| 126 |                    | <b>Bijnor</b>                    | 905 | 883 |
| 127 |                    | <b>Mainpuri</b>                  | 892 | 884 |
| 128 |                    | <b>Hamirpur</b>                  | 904 | 886 |
| 129 |                    | <b>Saharanpur</b>                | 872 | 887 |
| 130 | <b>Farrukhabad</b> | 897                              | 889 |     |
| 131 | <b>Mahoba</b>      | 900                              | 892 |     |
| 132 | Uttarakhand (5)    | Pithoragarh                      | 902 | 816 |
| 133 |                    | Champawat                        | 934 | 873 |
| 134 |                    | <b>Hardwar</b>                   | 862 | 877 |
| 135 |                    | <b>Dehradun</b>                  | 894 | 889 |
| 136 |                    | <b>Chamoli</b>                   | 935 | 889 |
| 137 | Andaman& Nicobar   | Nicobars                         | 937 | 945 |
| 138 | Andhra Pradesh     | Y.S.R.                           | 951 | 918 |
| 139 | Arunachal Pradesh  | Dibang Valley                    | 874 | 889 |
| 140 | Assam              | Kamrup                           | 943 | 946 |

|     |                      | Metropolitan         |     |     |
|-----|----------------------|----------------------|-----|-----|
| 141 | Bihar                | Vaishali             | 937 | 904 |
| 142 | Chandigarh           | Chandigarh           | 845 | 880 |
| 143 | Chhattisgarh         | Raigarh              | 964 | 947 |
| 144 | Dadra & Nagar Haveli | Dadra & Nagar Haveli | 979 | 926 |
| 145 | Daman & Diu          | Daman                | 907 | 897 |
| 146 | Goa                  | North Goa            | 938 | 939 |
| 147 | Jharkhand            | Dhanbad              | 951 | 916 |
| 148 | Karnataka            | Bijapur              | 928 | 931 |
| 149 | Kerala               | Thrissur             | 958 | 950 |
| 150 | Lakshadweep          | Lakshadweep          | 959 | 911 |
| 151 | Manipur              | Senapati             | 962 | 893 |
| 152 | Meghalaya            | Ribhoi               | 972 | 953 |
| 153 | Mizoram              | Saiha                | 950 | 932 |
| 154 | Nagaland             | Longleng             | 964 | 885 |
| 155 | Odisha               | Nayagarh             | 904 | 855 |
| 156 | Puducherry           | Yanam                | 964 | 921 |
| 157 | Sikkim               | North                | 995 | 929 |
| 158 | Tamil Nadu           | Cuddalore            | 957 | 896 |
| 159 | Telangana            | Hyderabad            | 943 | 914 |
| 160 | Tripura              | South Tripura        | 961 | 951 |
| 161 | West Bengal          | Kolkata              | 927 | 933 |

\*\*\*\*

**List of districts selected under Multisectoral Action: (244 districts)**

| S.No. | Name of State / UTs              | Districts                   | 2001 | 2011 |
|-------|----------------------------------|-----------------------------|------|------|
| 1     | <b>Andhra Pradesh</b><br>(07)    | Anantapur                   | 958  | 927  |
| 2     |                                  | Chittoor                    | 955  | 931  |
| 3     |                                  | Prakasam                    | 955  | 932  |
| 4     |                                  | Krishna                     | 963  | 935  |
| 5     |                                  | Kurnool                     | 958  | 938  |
| 6     |                                  | Sri Potti Sriramulu Nellore | 954  | 939  |
| 7     |                                  | Guntur                      | 959  | 945  |
| 8     | <b>Arunachal Pradesh</b><br>(05) | West Siang                  | 950  | 941  |
| 9     |                                  | Upper Siang                 | 1010 | 946  |
| 10    |                                  | Lower Dibang Valley         | 955  | 948  |
| 11    |                                  | Kurung Kumey                | 1049 | 983  |
| 12    |                                  | East Kameng                 | 1035 | 1001 |
| 13    | <b>Bihar</b><br>(16)             | Patna                       | 923  | 909  |
| 14    |                                  | Muzaffarpur                 | 928  | 915  |
| 15    |                                  | Bhojpur                     | 940  | 918  |
| 16    |                                  | Begusarai                   | 946  | 919  |
| 17    |                                  | Lakhisarai                  | 951  | 920  |
| 18    |                                  | Samastipur                  | 938  | 923  |
| 19    |                                  | Saran                       | 949  | 926  |
| 20    |                                  | Khagaria                    | 932  | 926  |
| 21    |                                  | Rohtas                      | 951  | 931  |
| 22    |                                  | Nalanda                     | 942  | 931  |
| 23    |                                  | Purba Champaran             | 937  | 933  |
| 24    |                                  | Madhubani                   | 939  | 936  |
| 25    |                                  | Bhagalpur                   | 966  | 938  |
| 26    |                                  | Sheikhpura                  | 955  | 940  |
| 27    |                                  | Banka                       | 965  | 943  |
| 28    |                                  | Nawada                      | 978  | 945  |
| 29    | <b>Chhattisgarh</b>              | Bijapur                     | 1000 | 978  |
| 30    | <b>Daman &amp; Diu</b>           | Diu                         | 960  | 929  |
| 31    | <b>Gujarat</b><br>(13)           | Surendranagar               | 886  | 896  |
| 32    |                                  | Kheda                       | 876  | 896  |
| 33    |                                  | Vadodara                    | 886  | 897  |

|    |                            |                     |     |     |
|----|----------------------------|---------------------|-----|-----|
| 34 |                            | Banas Kantha        | 907 | 898 |
| 35 |                            | Porbandar           | 898 | 903 |
| 36 |                            | Sabar Kantha        | 879 | 903 |
| 37 |                            | Jamnagar            | 898 | 904 |
| 38 |                            | Junagadh            | 903 | 907 |
| 39 |                            | Kachchh             | 922 | 921 |
| 40 |                            | Valsad              | 933 | 925 |
| 41 |                            | Panch Mahals        | 935 | 932 |
| 42 |                            | Narmada             | 945 | 941 |
| 43 |                            | Dohad               | 967 | 948 |
| 44 | <b>Haryana</b>             | Mewat               | 894 | 906 |
| 45 | <b>Himachal Pradesh</b>    | Solan               | 900 | 899 |
| 46 | (05)                       | Bilaspur            | 882 | 900 |
| 47 |                            | Mandi               | 918 | 916 |
| 48 |                            | Shimla              | 929 | 925 |
| 49 |                            | Sirmaur             | 934 | 928 |
| 50 | <b>Jammu &amp; Kashmir</b> | Punch               | 959 | 893 |
| 51 | (06)                       | Reasi               | 952 | 919 |
| 52 |                            | Kishtwar            | 977 | 924 |
| 53 |                            | Ramban              | 968 | 925 |
| 54 |                            | Doda                | 959 | 933 |
| 55 |                            | Leh(Ladakh)         | 955 | 946 |
| 56 | <b>Jharkhand</b>           | Hazaribagh          | 972 | 933 |
| 57 | (11)                       | Giridih             | 977 | 942 |
| 58 |                            | Bokaro              | 950 | 923 |
| 59 |                            | Kodarma             | 976 | 949 |
| 60 |                            | Ramgarh             | 953 | 927 |
| 61 |                            | Ranchi              | 960 | 938 |
| 62 |                            | Purbi Singhbhum     | 941 | 923 |
| 63 |                            | Palamu              | 963 | 945 |
| 64 |                            | Saraikela-Kharsawan | 954 | 943 |
| 65 |                            | Deoghar             | 973 | 950 |
| 66 |                            | Jamtara             | 977 | 954 |
| 67 | <b>Karnataka</b>           | Bagalkot            | 940 | 935 |
| 68 | (04)                       | Haveri              | 957 | 946 |
| 69 |                            | Gadag               | 952 | 947 |
| 70 |                            | Dakshina Kannada    | 952 | 947 |
| 71 | <b>Madhya Pradesh</b>      | Shivpuri            | 907 | 893 |
| 72 | (36)                       | Sheopur             | 929 | 897 |



|     |                             |                 |     |     |
|-----|-----------------------------|-----------------|-----|-----|
| 73  |                             | Chhatarpur      | 917 | 900 |
| 74  |                             | Indore          | 908 | 901 |
| 75  |                             | Satna           | 931 | 910 |
| 76  |                             | Guna            | 930 | 910 |
| 77  |                             | Narsimhapur     | 917 | 911 |
| 78  |                             | Sehore          | 927 | 912 |
| 79  |                             | Sidhi           | 952 | 914 |
| 80  |                             | Panna           | 932 | 914 |
| 81  |                             | Dewas           | 930 | 918 |
| 82  |                             | Hoshangabad     | 927 | 919 |
| 83  |                             | Rajgarh         | 938 | 920 |
| 84  |                             | Shajapur        | 936 | 920 |
| 85  |                             | Bhopal          | 925 | 920 |
| 86  |                             | Ashoknagar      | 932 | 921 |
| 87  |                             | Singrauli       | 955 | 923 |
| 88  |                             | Jabalpur        | 931 | 923 |
| 89  |                             | Burhanpur       | 934 | 924 |
| 90  |                             | Sagar           | 931 | 925 |
| 91  |                             | Vidisha         | 943 | 926 |
| 92  |                             | Mandsaur        | 946 | 927 |
| 93  |                             | Neemuch         | 931 | 927 |
| 94  |                             | Dhar            | 944 | 928 |
| 95  |                             | Damoh           | 935 | 928 |
| 96  |                             | Ujjain          | 938 | 930 |
| 97  |                             | East Nimar      | 946 | 932 |
| 98  |                             | Raisen          | 936 | 932 |
| 99  |                             | West Nimar      | 962 | 938 |
| 100 |                             | Ratlam          | 956 | 939 |
| 101 |                             | Katni           | 952 | 939 |
| 102 |                             | Jhabua          | 967 | 943 |
| 103 |                             | Umaria          | 959 | 943 |
| 104 |                             | Barwani         | 970 | 948 |
| 105 |                             | Anuppur         | 977 | 950 |
| 106 |                             | Seoni           | 977 | 953 |
| 107 | <b>Maharashtra<br/>(15)</b> | Satara          | 878 | 895 |
| 108 |                             | Dhule           | 907 | 898 |
| 109 |                             | Nanded          | 929 | 910 |
| 110 |                             | Akola           | 933 | 912 |
| 111 |                             | Mumbai Suburban | 923 | 913 |
| 112 |                             | Mumbai City     | 922 | 914 |

|     |                             |               |     |     |
|-----|-----------------------------|---------------|-----|-----|
| 113 |                             | Wardha        | 928 | 919 |
| 114 |                             | Sindhudurg    | 944 | 922 |
| 115 |                             | Yavatmal      | 933 | 922 |
| 116 |                             | Thane         | 931 | 924 |
| 117 |                             | Nagpur        | 942 | 931 |
| 118 |                             | Raigarh       | 939 | 935 |
| 119 |                             | Amravati      | 941 | 935 |
| 120 |                             | Ratnagiri     | 952 | 936 |
| 121 |                             | Nandurbar     | 961 | 944 |
| 122 | <b>Manipur</b><br>(07)      | Tamenglong    | 936 | 917 |
| 123 |                             | Chandel       | 962 | 921 |
| 124 |                             | Ukhrul        | 946 | 923 |
| 125 |                             | Bishnupur     | 952 | 933 |
| 126 |                             | Thoubal       | 967 | 935 |
| 127 |                             | Imphal East   | 963 | 943 |
| 128 |                             | Churachandpur | 968 | 948 |
| 129 | <b>Mizoram</b> (01)         | Serchhip      | 974 | 949 |
| 130 | <b>Nagaland</b><br>(06)     | Mon           | 973 | 912 |
| 131 |                             | Phek          | 926 | 913 |
| 132 |                             | Tuensang      | 968 | 933 |
| 133 |                             | Peren         | 968 | 935 |
| 134 |                             | Mokokchung    | 989 | 949 |
| 135 |                             | Wokha         | 985 | 956 |
| 136 | <b>NCT of Delhi</b><br>(02) | New Delhi     | 898 | 894 |
| 137 |                             | Central       | 903 | 905 |
| 138 | <b>Odisha</b><br>(14)       | Dhenkanal     | 925 | 877 |
| 139 |                             | Anugul        | 937 | 889 |
| 140 |                             | Ganjam        | 939 | 908 |
| 141 |                             | Cuttack       | 939 | 914 |
| 142 |                             | Khordha       | 926 | 916 |
| 143 |                             | Debagarh      | 956 | 927 |
| 144 |                             | Sundargarh    | 970 | 946 |
| 145 |                             | Sambalpur     | 959 | 940 |
| 146 |                             | Kendrapara    | 940 | 926 |
| 147 |                             | Jajapur       | 937 | 926 |
| 148 |                             | Jharsuguda    | 949 | 943 |
| 149 |                             | Bhadrak       | 943 | 942 |
| 150 |                             | Baleshwar     | 944 | 943 |
| 151 |                             | Kalahandi     | 984 | 957 |
| 152 | <b>Rajasthan</b><br>(19)    | Bundi         | 912 | 894 |
| 153 |                             | Jalor         | 921 | 895 |

|     |                              |                 |     |     |
|-----|------------------------------|-----------------|-----|-----|
| 154 |                              | Sirohi          | 918 | 897 |
| 155 |                              | Nagaur          | 915 | 897 |
| 156 |                              | Pali            | 925 | 899 |
| 157 |                              | Kota            | 912 | 899 |
| 158 |                              | Ajmer           | 922 | 901 |
| 159 |                              | Churu           | 906 | 902 |
| 160 |                              | Rajsamand       | 936 | 903 |
| 161 |                              | Barmer          | 919 | 904 |
| 162 |                              | Bikaner         | 920 | 908 |
| 163 |                              | Jhalawar        | 934 | 912 |
| 164 |                              | Chittaurgarh    | 926 | 912 |
| 165 |                              | Baran           | 919 | 912 |
| 166 |                              | Dungarpur       | 955 | 922 |
| 167 |                              | Banswara        | 962 | 934 |
| 168 |                              | Udaipur         | 947 | 924 |
| 169 |                              | Bhilwara        | 949 | 928 |
| 170 |                              | Pratapgarh      | 953 | 933 |
| 171 | <b>Tamil Nadu</b><br>(10)    | Ariyalur        | 949 | 897 |
| 172 |                              | Dharmapuri      | 826 | 913 |
| 173 |                              | Namakkal        | 889 | 914 |
| 174 |                              | Salem           | 851 | 916 |
| 175 |                              | Perambalur      | 937 | 913 |
| 176 |                              | Viluppuram      | 961 | 941 |
| 177 |                              | Tiruvannamalai  | 948 | 930 |
| 178 |                              | Thiruvallur     | 957 | 946 |
| 179 |                              | Tiruchirappalli | 955 | 947 |
| 180 |                              | Chennai         | 972 | 950 |
| 181 | <b>Telenagana</b><br>(07)    | Warangal        | 955 | 923 |
| 182 |                              | Nalgonda        | 952 | 923 |
| 183 |                              | Mahbubnagar     | 952 | 925 |
| 184 |                              | Rangareddy      | 959 | 933 |
| 185 |                              | Adilabad        | 962 | 934 |
| 186 |                              | Karimnagar      | 962 | 935 |
| 187 |                              | Nizamabad       | 959 | 948 |
| 188 | <b>Uttar Pradesh</b><br>(47) | Kanpur Nagar    | 869 | 873 |
| 189 |                              | Varanasi        | 919 | 885 |
| 190 |                              | Allahabad       | 917 | 893 |
| 191 |                              | Kanshiram Nagar | 905 | 893 |
| 192 |                              | Auraiya         | 894 | 896 |
| 193 |                              | Kanpur Dehat    | 892 | 897 |
| 194 |                              | Kannauj         | 912 | 898 |

|     |                                 |     |     |
|-----|---------------------------------|-----|-----|
| 195 | Budaun                          | 890 | 899 |
| 196 | Hardoi                          | 914 | 899 |
| 197 | Ballia                          | 942 | 900 |
| 198 | Mirzapur                        | 928 | 902 |
| 199 | Banda                           | 917 | 902 |
| 200 | Sant Ravidas Nagar<br>(Bhadohi) | 916 | 902 |
| 201 | Shahjahanpur                    | 895 | 903 |
| 202 | Jyotiba Phule Nagar             | 911 | 903 |
| 203 | Bareilly                        | 906 | 903 |
| 204 | Chitrakoot                      | 928 | 907 |
| 205 | Fatehpur                        | 927 | 907 |
| 206 | Ghazipur                        | 934 | 908 |
| 207 | Gorakhpur                       | 934 | 909 |
| 208 | Chandauli                       | 937 | 911 |
| 209 | Pilibhit                        | 941 | 912 |
| 210 | Lucknow                         | 915 | 915 |
| 211 | Moradabad                       | 912 | 916 |
| 212 | Lalitpur                        | 931 | 916 |
| 213 | Pratapgarh                      | 936 | 917 |
| 214 | Jaunpur                         | 930 | 918 |
| 215 | Azamgarh                        | 949 | 919 |
| 216 | Unnao                           | 923 | 920 |
| 217 | Kheri                           | 943 | 921 |
| 218 | Sultanpur                       | 941 | 922 |
| 219 | Kaushambi                       | 946 | 923 |
| 220 | Sonbhadra                       | 957 | 925 |
| 221 | Deoria                          | 948 | 925 |
| 222 | Gonda                           | 952 | 926 |
| 223 | Mau                             | 946 | 926 |
| 224 | Rae Bareli                      | 941 | 926 |
| 225 | Shrawasti                       | 944 | 928 |
| 226 | Kushinagar                      | 955 | 929 |
| 227 | Basti                           | 938 | 929 |
| 228 | Sitapur                         | 936 | 930 |
| 229 | Mahrajganj                      | 958 | 931 |
| 230 | Faizabad                        | 945 | 931 |
| 231 | Ambedkar Nagar                  | 942 | 932 |
| 232 | Bara Banki                      | 941 | 932 |
| 233 | Bahraich                        | 965 | 935 |
| 234 | Siddharthnagar                  | 964 | 935 |

|     |                            |                   |     |     |
|-----|----------------------------|-------------------|-----|-----|
| 235 | <b>Uttarakhand</b><br>(08) | Tehri Garhwal     | 927 | 897 |
| 236 |                            | Udham Singh Nagar | 913 | 899 |
| 237 |                            | Nainital          | 911 | 902 |
| 238 |                            | Bageshwar         | 931 | 904 |
| 239 |                            | Garhwal           | 930 | 904 |
| 240 |                            | Rudraprayag       | 953 | 905 |
| 241 |                            | Uttarkashi        | 942 | 916 |
| 242 |                            | Almora            | 932 | 922 |
| 243 | <b>West Bengal</b><br>(02) | Koch Bihar        | 964 | 948 |
| 244 |                            | Bankura           | 953 | 949 |

**List of districts selected under Media Advocacy and Outreach:**  
**(235 districts)**

| S.No. | Name of State / Uts                  | Districts              | 2001 | 2011 |
|-------|--------------------------------------|------------------------|------|------|
| 1     | <b>Andaman &amp; Nicobar</b><br>(02) | South Andaman          | 949  | 969  |
| 2     |                                      | North & Middle Andaman | 977  | 974  |
| 3     | <b>Andhra Pradesh</b><br>(05)        | Srikakulam             | 967  | 954  |
| 4     |                                      | Vizianagaram           | 980  | 960  |
| 5     |                                      | Visakhapatnam          | 976  | 961  |
| 6     |                                      | West Godavari          | 970  | 964  |
| 7     |                                      | East Godavari          | 978  | 968  |
| 8     | <b>Arunachal Pradesh</b><br>(10)     | Tirap                  | 941  | 961  |
| 9     |                                      | Lower Subansiri        | 972  | 966  |
| 10    |                                      | Lohit                  | 933  | 966  |
| 11    |                                      | Upper Subansiri        | 985  | 970  |
| 12    |                                      | West Kameng            | 955  | 973  |
| 13    |                                      | Papum Pare             | 978  | 977  |
| 14    |                                      | Changlang              | 954  | 979  |
| 15    |                                      | Tawang                 | 948  | 986  |
| 16    |                                      | East Siang             | 958  | 988  |
| 17    |                                      | Anjaw                  | 932  | 991  |
| 18    | <b>Assam</b><br>(26)                 | Dhemaji                | 970  | 950  |
| 19    |                                      | Cachar                 | 961  | 954  |
| 20    |                                      | Kokrajhar              | 955  | 954  |
| 21    |                                      | Hailakandi             | 927  | 954  |
| 22    |                                      | Morigaon               | 966  | 956  |
| 23    |                                      | Karbi Anglong          | 974  | 959  |
| 24    |                                      | Lakhimpur              | 967  | 959  |
| 25    |                                      | Sivasagar              | 968  | 960  |
| 26    |                                      | Tinsukia               | 958  | 960  |
| 27    |                                      | Barpeta                | 961  | 961  |
| 28    |                                      | Dibrugarh              | 962  | 962  |
| 29    |                                      | Goalpara               | 974  | 963  |
| 30    |                                      | Golaghat               | 963  | 963  |
| 31    |                                      | Nagaon                 | 975  | 964  |
| 32    |                                      | Jorhat                 | 967  | 964  |
| 33    |                                      | Sonitpur               | 974  | 966  |

|    |                             |                     |     |     |
|----|-----------------------------|---------------------|-----|-----|
| 34 |                             | Baksa               | 961 | 966 |
| 35 |                             | Dima Hasao          | 955 | 967 |
| 36 |                             | Nalbari             | 961 | 967 |
| 37 |                             | Kamrup              | 963 | 967 |
| 38 |                             | Chirang             | 958 | 968 |
| 39 |                             | Dhubri              | 964 | 968 |
| 40 |                             | Darrang             | 977 | 969 |
| 41 |                             | Bongaigaon          | 972 | 969 |
| 42 |                             | Karimganj           | 965 | 969 |
| 43 |                             | Udalguri            | 975 | 973 |
| 44 | <b>Bihar</b><br>(21)        | Jehanabad           | 915 | 922 |
| 45 |                             | Munger              | 914 | 922 |
| 46 |                             | Sheohar             | 916 | 929 |
| 47 |                             | Madhepura           | 927 | 930 |
| 48 |                             | Sitamarhi           | 924 | 930 |
| 49 |                             | Darbhanga           | 915 | 931 |
| 50 |                             | Saharsa             | 912 | 933 |
| 51 |                             | Buxar               | 925 | 934 |
| 52 |                             | Siwan               | 934 | 940 |
| 53 |                             | Arwal               | 920 | 940 |
| 54 |                             | Kaimur (Bhabua)     | 940 | 942 |
| 55 |                             | Aurangabad          | 943 | 944 |
| 56 |                             | Supaul              | 925 | 944 |
| 57 |                             | Pashchim Champaran  | 953 | 953 |
| 58 |                             | Purnia              | 967 | 954 |
| 59 |                             | Gopalganj           | 964 | 954 |
| 60 |                             | Jamui               | 963 | 956 |
| 61 |                             | Araria              | 963 | 957 |
| 62 |                             | Gaya                | 968 | 960 |
| 63 |                             | Katihar             | 966 | 961 |
| 64 |                             | Kishanganj          | 947 | 971 |
| 65 | <b>Chhattisgarh</b><br>(16) | Janjgir – Champa    | 966 | 950 |
| 66 |                             | Bilaspur            | 965 | 961 |
| 67 |                             | Surguja             | 977 | 962 |
| 68 |                             | Durg                | 966 | 963 |
| 69 |                             | Korba               | 978 | 966 |
| 70 |                             | Koriya              | 970 | 968 |
| 71 |                             | Raipur              | 965 | 968 |
| 72 |                             | Mahasamund          | 979 | 971 |
| 73 |                             | Dhamtari            | 976 | 973 |
| 74 |                             | Uttar Bastar Kanker | 975 | 978 |

|     |                                 |                          |      |      |
|-----|---------------------------------|--------------------------|------|------|
| 75  |                                 | Jashpur                  | 975  | 980  |
| 76  |                                 | Kabeerdham               | 970  | 983  |
| 77  |                                 | Rajnandgaon              | 984  | 986  |
| 78  |                                 | Narayanpur               | 999  | 989  |
| 79  |                                 | Bastar                   | 1009 | 994  |
| 80  |                                 | Dakshin Bastar Dantewada | 1023 | 1005 |
| 81  | <b>Goa (01)</b>                 | South Goa                | 937  | 946  |
| 82  | <b>Gujarat (04)</b>             | Bharuch                  | 918  | 920  |
| 83  |                                 | Navsari                  | 915  | 923  |
| 84  |                                 | Tapi                     | 951  | 953  |
| 85  |                                 | The Dangs                | 974  | 964  |
| 86  | <b>Himachal Pradesh (04)</b>    | Chamba                   | 955  | 953  |
| 87  |                                 | Kullu                    | 960  | 962  |
| 88  |                                 | Kinnaur                  | 979  | 963  |
| 89  |                                 | Lahul & Spiti            | 961  | 1033 |
| 90  | <b>Jammu &amp; Kashmir (01)</b> | Kargil                   | 980  | 977  |
| 91  | <b>Jharkhand (12)</b>           | Godda                    | 978  | 960  |
| 92  |                                 | Sahibganj                | 975  | 960  |
| 93  |                                 | Garhwa                   | 962  | 960  |
| 94  |                                 | Gumla                    | 975  | 963  |
| 95  |                                 | Khunti                   | 966  | 964  |
| 96  |                                 | Dumka                    | 975  | 966  |
| 97  |                                 | Chatra                   | 976  | 967  |
| 98  |                                 | Latehar                  | 976  | 968  |
| 99  |                                 | Simdega                  | 978  | 969  |
| 100 |                                 | Lohardaga                | 945  | 970  |
| 101 |                                 | Pakur                    | 964  | 975  |
| 102 |                                 | Pashchimi Singhbhum      | 978  | 983  |
| 103 | <b>Karnataka (25)</b>           | Belgaum                  | 921  | 934  |
| 104 |                                 | Mandya                   | 934  | 939  |
| 105 |                                 | Bidar                    | 941  | 942  |
| 106 |                                 | Gulbarga                 | 931  | 943  |
| 107 |                                 | Dharwad                  | 943  | 944  |
| 108 |                                 | Bangalore                | 943  | 944  |
| 109 |                                 | Chitradurga              | 946  | 947  |
| 110 |                                 | Davanagere               | 946  | 948  |
| 111 |                                 | Raichur                  | 964  | 950  |
| 112 |                                 | Bangalore Rural          | 939  | 950  |
| 113 |                                 | Yadgir                   | 952  | 951  |
| 114 |                                 | Chamarajanagar           | 964  | 953  |



|     |                               |                    |     |     |
|-----|-------------------------------|--------------------|-----|-----|
| 115 |                               | Chikkaballapura    | 952 | 953 |
| 116 |                               | Uttara Kannada     | 946 | 955 |
| 117 |                               | Koppal             | 953 | 958 |
| 118 |                               | Udupi              | 958 | 958 |
| 119 |                               | Tumkur             | 949 | 959 |
| 120 |                               | Bellary            | 947 | 960 |
| 121 |                               | Shimoga            | 956 | 960 |
| 122 |                               | Mysore             | 962 | 961 |
| 123 |                               | Kolar              | 965 | 962 |
| 124 |                               | Ramanagara         | 945 | 962 |
| 125 |                               | Chikmagalur        | 959 | 969 |
| 126 |                               | Hassan             | 958 | 973 |
| 127 |                               | Kodagu             | 977 | 978 |
| 128 | <b>Kerala</b><br>(13)         | Alappuzha          | 956 | 951 |
| 129 |                               | Ernakulam          | 954 | 961 |
| 130 |                               | Kasaragod          | 959 | 961 |
| 131 |                               | Idukki             | 969 | 964 |
| 132 |                               | Kottayam           | 962 | 964 |
| 133 |                               | Thiruvananthapuram | 962 | 964 |
| 134 |                               | Wayanad            | 959 | 965 |
| 135 |                               | Malappuram         | 960 | 965 |
| 136 |                               | Palakkad           | 963 | 967 |
| 137 |                               | Kozhikode          | 959 | 969 |
| 138 |                               | Kannur             | 962 | 971 |
| 139 |                               | Kollam             | 960 | 973 |
| 140 |                               | Pathanamthitta     | 967 | 976 |
| 141 | <b>Madhya Pradesh</b><br>(08) | Harda              | 925 | 928 |
| 142 |                               | Shahdol            | 969 | 950 |
| 143 |                               | Chhindwara         | 958 | 956 |
| 144 |                               | Betul              | 969 | 957 |
| 145 |                               | Balaghat           | 968 | 967 |
| 146 |                               | Dindori            | 989 | 970 |
| 147 |                               | Mandla             | 981 | 970 |
| 148 |                               | Alirajpur          | 982 | 978 |
| 149 | <b>Maharashtra</b><br>(04)    | Bhandara           | 956 | 950 |
| 150 |                               | Chandrapur         | 939 | 953 |
| 151 |                               | Gondiya            | 958 | 956 |
| 152 |                               | Gadchiroli         | 966 | 961 |
| 153 | <b>Manipur</b>                | Imphal West        | 943 | 949 |
| 154 | <b>Meghalaya</b><br>(06)      | East Khasi Hills   | 972 | 964 |
| 155 |                               | West Khasi Hills   | 975 | 967 |

|     |                           |                  |     |     |
|-----|---------------------------|------------------|-----|-----|
| 156 |                           | South Garo Hills | 971 | 974 |
| 157 |                           | Jaintia Hills    | 995 | 976 |
| 158 |                           | West Garo Hills  | 959 | 976 |
| 159 |                           | East Garo Hills  | 972 | 980 |
| 160 | <b>Mizoram</b><br>(06)    | Lunglei          | 962 | 963 |
| 161 |                           | Lawngtlai        | 947 | 967 |
| 162 |                           | Champhai         | 974 | 971 |
| 163 |                           | Mamit            | 937 | 979 |
| 164 |                           | Aizawl           | 973 | 979 |
| 165 |                           | Kolasib          | 973 | 980 |
| 166 | <b>Nagaland</b><br>(04)   | Zunheboto        | 944 | 948 |
| 167 |                           | Kiphire          | 936 | 948 |
| 168 |                           | Dimapur          | 970 | 966 |
| 169 |                           | Kohima           | 967 | 985 |
| 170 | <b>Odisha</b><br>(15)     | Jagatsinghapur   | 926 | 929 |
| 171 |                           | Puri             | 931 | 932 |
| 172 |                           | Subarnapur       | 967 | 952 |
| 173 |                           | Balangir         | 967 | 955 |
| 174 |                           | Bargarh          | 957 | 957 |
| 175 |                           | Mayurbhanj       | 956 | 960 |
| 176 |                           | Kandhamal        | 970 | 962 |
| 177 |                           | Rayagada         | 981 | 965 |
| 178 |                           | Kendujhar        | 962 | 967 |
| 179 |                           | Gajapati         | 964 | 967 |
| 180 |                           | Baudh            | 966 | 978 |
| 181 |                           | Koraput          | 983 | 979 |
| 182 |                           | Nuapada          | 969 | 981 |
| 183 |                           | Malkangiri       | 982 | 992 |
| 184 |                           | Nabarangapur     | 999 | 998 |
| 185 | <b>Puducherry</b><br>(03) | Karaikal         | 979 | 969 |
| 186 |                           | Puducherry       | 967 | 970 |
| 187 |                           | Mahe             | 910 | 978 |
| 188 | <b>Sikkim</b><br>(03)     | South District   | 969 | 953 |
| 189 |                           | East District    | 950 | 960 |
| 190 |                           | West District    | 966 | 964 |
| 191 | <b>Tamil Nadu</b><br>(21) | Krishnagiri      | 905 | 926 |
| 192 |                           | Madurai          | 926 | 932 |
| 193 |                           | Dindigul         | 930 | 934 |
| 194 |                           | Theni            | 891 | 934 |
| 195 |                           | Karur            | 930 | 939 |
| 196 |                           | Vellore          | 943 | 944 |

|     |                              |                            |     |     |
|-----|------------------------------|----------------------------|-----|-----|
| 197 |                              | Tiruppur                   | 954 | 952 |
| 198 |                              | Erode                      | 935 | 953 |
| 199 |                              | Virudhunagar               | 958 | 955 |
| 200 |                              | Coimbatore                 | 968 | 956 |
| 201 |                              | Thanjavur                  | 959 | 957 |
| 202 |                              | Thiruvarur                 | 970 | 958 |
| 203 |                              | Nagapattinam               | 963 | 959 |
| 204 |                              | Kancheepuram               | 961 | 959 |
| 205 |                              | Sivaganga                  | 952 | 960 |
| 206 |                              | Pudukkottai                | 955 | 960 |
| 207 |                              | Tirunelveli                | 957 | 960 |
| 208 |                              | Ramanathapuram             | 964 | 961 |
| 209 |                              | Thoothukkudi               | 953 | 963 |
| 210 |                              | Kanniyakumari              | 968 | 964 |
| 211 |                              | The Nilgiris               | 979 | 985 |
| 212 | <b>Telengana</b>             | Medak                      | 964 | 952 |
| 213 | (02)                         | Khammam                    | 971 | 958 |
| 214 | <b>Tripura</b><br>(03)       | West Tripura               | 967 | 952 |
| 215 |                              | Dhalai                     | 965 | 968 |
| 216 |                              | North Tripura              | 970 | 969 |
| 217 | <b>Uttar Pradesh</b><br>(03) | Rampur                     | 922 | 924 |
| 218 |                              | Sant Kabir Nagar           | 941 | 942 |
| 219 |                              | Balrampur                  | 961 | 950 |
| 220 | <b>West Bengal</b><br>(16)   | Purba Medinipur            | 942 | 946 |
| 221 |                              | Maldah                     | 964 | 950 |
| 222 |                              | Barddhaman                 | 957 | 951 |
| 223 |                              | Hugli                      | 951 | 952 |
| 224 |                              | Uttar Dinajpur             | 965 | 953 |
| 225 |                              | Puruliya                   | 964 | 953 |
| 226 |                              | Darjiling                  | 962 | 953 |
| 227 |                              | Jalpaiguri                 | 969 | 955 |
| 228 |                              | North Twenty Four Parganas | 957 | 956 |
| 229 |                              | Dakshin Dinajpur           | 966 | 957 |
| 230 |                              | Birbhum                    | 964 | 959 |
| 231 |                              | Nadia                      | 972 | 960 |
| 232 |                              | Haora                      | 956 | 962 |
| 233 |                              | South Twenty Four Parganas | 964 | 963 |
| 234 |                              | Paschim Medinipur          | 959 | 963 |
| 235 |                              | Murshidabad                | 972 | 968 |

## Annexure- IV

## Component and year wise expenditure

| (Rs. in Lakhs ) |  |               |              |                 |               |              |                 |               |              |                 |                   |
|-----------------|--|---------------|--------------|-----------------|---------------|--------------|-----------------|---------------|--------------|-----------------|-------------------|
| S. No           | Particulars at each level  | Cost per unit | No of unit   | 2017-18         | Cost per unit | No of unit   | 2018-19         | Cost per unit | No of unit   | 2019-2020       | Total             |
| 1               | <b>Central Level</b>   |               |              |                 |               |              |                 |               |              |                 |                   |
|                 | (i) Media Campaign (by MoI&B, DAVP)  | 25            | 405          | 10125           | 25            | 405          | 10125           | 25            | 405          | 10125           |                   |
|                 | (ii) Training/orientation/ Consultation, Workshops/Research/Development of MIS & its maintenance/other miscellaneous works               | 500           | -            | 500             | 500           | -            | 500             | 500           | -            | 500             |                   |
|                 | (iii) Monitoring and Evaluation  | 1000          | -            | 1000            | 1000          | -            | 1000            | 1000          | -            | 1000            |                   |
|                 | (iv)Media Campaign for 235 BBBP Alert Districts  | 25            | 235          | 5875            | 25            | 235          | 5875            | 25            | 235          | 5875            |                   |
|                 | <b>Sub Total (Central Level)</b>   |               |              | <b>17500</b>    |               |              | <b>17500</b>    |               |              | <b>17500</b>    | <b>52500</b>      |
| 2               | <b>District Level</b>  |               |              |                 |               |              |                 |               |              |                 |                   |
| i).             | (i) Inter-sectoral Consultation & Meeting of DTF and BTF and media campaign<br>(ii) Training & Capacity building/sensitization programme | 8             | 405(161+244) | 3240            | 8             | 405(161+244) | 3240            | 8             | 405(161+244) | 3240            |                   |
| ii).            | i) Innovation and Outreach Activities.<br><b>(ii) IEC material/awareness kit to Anganwadi Centers</b>                                    | 25            | 405          | 10125           | 20            | 405          | 10125           | 20            | 405          | 10125           |                   |
| iii).           | Monitoring, Evaluation and Documentation   | 3             | 405          | 1215            | 3             | 405          | 1215            | 3             | 405          | 1215            |                   |
| iv).            | Sectoral activities of M/O HRD   | 5             | 405          | 2025            | 5             | 405          | 2025            | 5             | 405          | 2025            |                   |
| v).             | Sectoral activities of MoH&FW  | 5             | 405          | 2025            | 5             | 405          | 2025            | 5             | 405          | 2025            |                   |
| vi).            | Flexi fund (10%)   | 4             | 405          | 1620            | 4             | 405          | 1620            | 4             | 405          | 1620            |                   |
|                 | <b>Sub Total (District Level)</b>  | <b>50</b>     | <b>405</b>   | <b>20250</b>    | <b>50</b>     | <b>405</b>   | <b>20250</b>    | <b>50</b>     | <b>405</b>   | <b>20250</b>    | <b>60750</b>      |
|                 | <b>Grand Total</b>   |               |              | <b>37750</b>    |               |              | <b>37750</b>    |               |              | <b>37750</b>    | <b>113250</b>     |
|                 |  |               |              | <b>377.5 Cr</b> |               |              | <b>377.5 Cr</b> |               |              | <b>377.5 Cr</b> | <b>1132.5 Cr.</b> |

## Annexure-V

| Central level norms |  |               |            |                |               |            |                |               |            |                |                 |
|---------------------|--|---------------|------------|----------------|---------------|------------|----------------|---------------|------------|----------------|-----------------|
|                     |  |               |            |                |               |            |                |               |            |                | (Rs. in Lakhs ) |
| S. No               | Particulars  | Cost per unit | No of unit | 2017-18        | Cost per unit | No of unit | 2018-19        | Cost per unit | No of unit | 2019-2020      | Total           |
| 1                   | <b>Central Level</b>   |               |            |                |               |            |                |               |            |                |                 |
|                     | (i) Media Campaign (by MoI&B, DAVP)  | 25            | 405        | 10125          | 25            | 405        | 10125          | 25            | 405        | 10125          |                 |
|                     | (ii) Training/orientation/ Consultation, Workshops/Research/Development of MIS & its maintenance/other miscellaneous works | 500           | -          | 500            | 500           | -          | 500            | 500           | -          | 500            |                 |
|                     | (iii) Monitoring and Evaluation  | 1000          | -          | 1000           | 1000          | -          | 1000           | 1000          | -          | 1000           |                 |
|                     | (iv)Media Campaign for 235 BBBP Alert Districts  | 25            | 235        | 5875           | 25            | 235        | 5875           | 25            | 235        | 5875           |                 |
|                     | <b>Sub Total (Central Level)</b>   |               |            | <b>17500</b>   |               |            | <b>17500</b>   |               |            | <b>17500</b>   | <b>52500</b>    |
|                     |  |               |            | <b>175 Cr.</b> |               |            | <b>175 Cr.</b> |               |            | <b>175 Cr.</b> | <b>525 Cr.</b>  |

## Annexure- VI

| District Wise Component |   |                             |                 |                  |                 |                  |                 |                  |                  |
|-------------------------|---|-----------------------------|-----------------|------------------|-----------------|------------------|-----------------|------------------|------------------|
| S.No                    | Items/Components  | Budgetary Ceiling (in lakh) | 2017-18         |                  | 2018-19         |                  | 2019-20         |                  | Total            |
|                         |   |                             | No of Districts | cost (in lakh)   | No of Districts | cost (in lakh)   | No of Districts | cost (in lakh)   | cost (in lakh)   |
| 1                       | (i) Inter-sectoral Consultation, Meetings of DTF, BTF and Media Campaign<br>(ii) Training & Capacity building/sensitization programme | 8                           | 405(161+244)    | 3240             | 405(161+244)    | 3240             | 405(161+244)    | 3240             |                  |
| 2                       | (i) Innovation and Outreach Activities<br>(ii) IEC material/awareness kit to Anganwadi Centers  | 25                          | 405             | 10125            | 405             | 10125            | 405             | 10125            |                  |
| 3                       | Monitoring, Evaluation and Documentation  | 3                           | 405             | 1215             | 405             | 1215             | 405             | 1215             |                  |
| 4                       | Sectoral activities of M/O HRD  | 5                           | 405             | 2025             | 405             | 2025             | 405             | 2025             |                  |
| 5                       | Sectoral activities of M/O H&FW   | 5                           | 405             | 2025             | 405             | 2025             | 405             | 2025             |                  |
| 6                       | Flexi Fund (10%)  | 4                           | 405             | 1620             | 405             | 1620             | 405             | 1620             |                  |
| 7                       | <b>Total</b>  | <b>50</b>                   | <b>405</b>      | <b>20250</b>     | <b>405</b>      | <b>20250</b>     | <b>405</b>      | <b>20250</b>     | <b>60750</b>     |
|                         |   |                             |                 | <b>202.5 Cr.</b> |                 | <b>202.5 Cr.</b> |                 | <b>202.5 Cr.</b> | <b>607.5 Cr.</b> |

| <b>Annexure –VII</b>        |   |                    |                      |                          |
|-----------------------------|---|--------------------|----------------------|--------------------------|
| <b>District Level Norms</b> |   |                    |                      | <b>In lakhs</b>          |
| <b>Sl. No</b>               | <b>Item</b>   | <b>No of units</b> | <b>Cost per unit</b> | <b>Budgetary Ceiling</b> |
| <b>1</b>                    | (i) <b>Inter-sectoral Consultation, Meetings of DTF, BTF and Media Campaign</b><br>(ii) <b>Training &amp; Capacity building/sensitization programme</b> |                    |                      | 8                        |
| <b>2</b>                    | (i) <b>Innovation and Outreach</b><br>(ii) <b>IEC material/awareness kit to Anganwadi Centers</b>   |                    |                      | 25                       |
| <b>3</b>                    | <b>Monitoring, Evaluation and Documentation</b>   |                    |                      | 3                        |
| <b>4</b>                    | <b>Sectoral activities of M/O HRD</b>   |                    |                      | 5                        |
| <b>5</b>                    | <b>Sectoral activities of M/O H&amp;FW</b>  |                    |                      | 5                        |
| <b>6</b>                    | <b>Flexi Fund (10%)</b>   |                    |                      | 4                        |
| <b>7</b>                    | <b>Total</b>  |                    |                      | <b>50</b>                |

Note:

1. **Activities as in s.n 1 (ii) above may include**(District Officers/Religious leaders/PRI/Judiciary, frontline workers/VHSNC members/Youth groups, SHGs, NGOs).
2. **The activities at S.No. 2 above may include:**
  - (i)Adoption of Innovative practices: such as celebration of Girl Child Day (Fix day in a month), /Beti Janmotsava/ Incentivising panchayat/ Urban ward/ frontline worker for adopting best practice/felicitating Girls child & her family in hospitals with birth certificate & sweets (ii) Outreach activities: such as Nukkad Natak/rally/baby show, regular meetings of Village Health Sanitation and Nutrition Committee (VHSNC), organise special Gram Sabha on CSR on quarterly basis and similar other activities identified by DTF/BTF. (iii) BBBP IEC material/awareness kit to Anganwadi Centers.
3. Details related to **Sectoral activities of M/O HRD as mentioned at S.No.4 may include** activities which promotes girl education apart from the activities listed below:
  - i. Sanction of additional school grant amounting to Rs. 10,000/- to each primary school achieving the target of 100% transition of girl students from class V to VI.

- ii. Sanction of additional school grant amounting to Rs. 15,000/- to each upper primary school achieving the target of 100% transition of girl students from class VIII to IX.
- iii. Sanction of additional school grant amounting to Rs. 20,000/- to each secondary school achieving the target of 100% transition of girl students from class X to XI.
- iv. Felicitation at district level function with certificate and cash prize of Rs. 5,000/- to each of the top ten girl students in the district passing the class Xth state board exam.
- v. Felicitation at district level function with certificate and cash prize of Rs. 5,000/- to each of the top ten girl students in the district passing the class XIIth state board exam.
- vi. Felicitation at district level with a prize of Rs. 20,000/- to the girl topper of class XII state board exam in the district who enrolls for higher education
- vii. The selection of the schools/students will be done on the basis of UDISE data and Board results.

**4. Details related to Sectoral activities of M/O HFW as mentioned at S.No.4 are:**

- i. Conduct awareness campaigns and sensitization of all the stakeholders
- ii. Training of the medical officers conducting diagnostic procedures in the government facilities on the provisions of PC&PNDT Act
- iii. Conduct decoy cooperation and provide rewards to informers
- iv. Any other activity to strengthen implementation of PC&PNDT act



**Procedure to be followed by District Magistrate/ District Collectors/Implementing Agency to register under PFMS for transfer of GIA for BBBP Scheme**

1. **Step-I:- Opening of Bank Accounts:-** The District Magistrate/District Collectors Or the Nodal Agency for this purpose will be designated as the implementing agency at District level. The District Magistrate/District Collectors will be required to open separate Bank Accounts in the name of BBBP Scheme at the District HQ for transfer of funds directly by the PAO. The Bank Account will be opened in the name of the Scheme e.g '**District Magistrate/District Collector, BBBP, name of district**'. Details of the Bank Account, one cancelled cheque and front page of passbook containing bank details shall be sent to the concerned program division (BBBP) of the Ministry.
2. **Step-II:- Agency Registration on PFMS:** Once the Step-I is completed, the District Magistrate/District Collector are required to register themselves on PFMS portal as implementing agency. For this purpose the following steps are required to be followed:-
  - (a) Access the website pfms.nic.in and follow the steps for implementing agency, as available on website <http://pfms.nic.in/Static/UserGuide>. In this way Unique ID, Login and password will be created.
  - (b) Login ID and password will also be automatically sent to the email filled in the registration form. The User ID and Password may not be disclosed for security purposes.
  - (c) For further login District Magistrate/District Collector may use the same Login ID and Password but it is better to change the password after 1<sup>st</sup> login and thereafter periodically.
  - (d) The District Magistrate/District Collector are also required to send their unique code along with Bank Mandate form, cancelled cheque and front page of passbook containing bank details to the respective Programme Division, BBBP, MWCD for agency mapping in PFMS.
3. **Step-III- Agency and Scheme mapping by Programme Division:** The Program Division of the Ministry will map Agency with the respective schemes and get them approved from Pr. Accounts Officer by submitting the Bank Mandate Form.
4. The fund is released by the PAO directly in the separate Bank Account of the District Magistrate/District Collector opened specially for BBBP Scheme. The District Magistrate/District Collector are required to use the PFMS portal for further disbursement of these funds. A quarterly bank statement shall be furnished by the District Magistrate/District Collector to the Program Division for monitoring of unspent balances. All the Rules/Orders as applicable from time to time are available on PFMS portal and their compliance may be ensured by the Implementing agencies.

**Annexure VIII (Contd.)**

**Proforma to be filled up and returned by email for release of funds under Beti Bachao Beti Padhao(BBBP)**

|    |  |  |
|----|--|--|
| 1. | Name of the District   |  |
| 2. | Updated contact details and email address of the nodal person  |  |
| 3. | Details of Bank Account opened in the name of the Scheme<br>(i) Name of Account Holder<br>(ii) Name of Account as in Passbook<br>(iii) Account No. |  |
| 4  | A copy of one cancelled cheque   |  |
| 5. | A copy of front page of passbook containing bank details   |  |
| 6. | Status of Registration of District Magistrate/District Collectors/Agency on PFMS portal  |  |
| 7. | Name of Agency as created in PFMS  |  |
| 8. | Unique code obtained after registration on PFMS with Bank Mandate Form   |  |

**Annexure VIII (Contd.)**

**MANDATE FORM**

**ELECTRONIC CLEARANCE SERVICE (CREDIT CLEARING)/REAL TIME GROSS SETTLEMENT (RTGS) FACILITY FOR RECEIVING PAYMENTS**

**A. DETAIL OF ACCOUNT:**

|   |  |
|---|--|
| NAME OF ACCOUNT (As mentioned in Bank Passbook) |  |
| AGENCY NAME (As mentioned in PFMS)              |  |
| NAME OF ACCOUNT HOLDER                          |  |
| COMPLETE CONTACT ADDRESS                        |  |
| TELEPHONE NUMBER/FAX/EMAIL                      |  |

**B. BANK ACCOUNT DETAILS:**

|  |  |
|--|--|
| BANK NAME  |  |
| BRANCH NAME WITH COMPLETE ADDRESS, TELEPHONE NUMBER AND EMAIL                                    |  |
| WHETHER THE BRANCH IS COMPUTERIZED?  |  |
| WHETHER THE BRANCH IS RTGS ENABLED?<br>IF YES, THEN WHAT IS THE BRANCH'S <b><u>IFSC CODE</u></b> |  |
| IS THE BRANCH ALSO NEFT ENABLED  |  |
| TYPE OF BANK ACCOUNT (SB/CURRENT/CASH CREDIT)  |  |
| COMPLETE BANK ACCOUNT NUMBER (LATEST)  |  |
| MICR CODE OF BANK  |  |

DATE OF EFFECT:-

I hereby declare that the particulars given above are correct and complete. If the transaction is delayed or not effected at all for reasons of incomplete or incorrect information, I would not hold the user Institution responsible. I have read the option invitation letter and agree to discharge responsibility expected of me as a participant under the scheme.

(.....)  
**Signature of Account Holder with stamp**

Date:

Certified that the particulars furnished above are correct as per our records.

(.....)  
**Signature of Account Holder with stamp**

**(Bank authority signature with stamp)**

Date:

1. Please attach a photocopy of cancelled cheque along with the verification obtained from the bank.
2. In case your Bank Branch is presently not "RTGS enabled", then upon its upgradation to "RTGS Enabled" branch, please submit the information again in the above proforma to the Department at the earliest.



## **BETI BACHAO BETI PADHAO**

# **Guidelines for District Collectors/ Deputy Commissioners**



**Ministry of Women & Child Development  
Government of India**  
[www.wcd.nic.in](http://www.wcd.nic.in)  
[www.youtube.com/user/betibachaobeti padhao](http://www.youtube.com/user/betibachaobeti padhao)

## Table of Contents

1. Districts covered
2. Guidelines on strategic actions
  - 2.1. Mechanisms for planning, implementation and monitoring
  - 2.2. Implementation Activities
    - 2.2.1. Orientation and Sensitization
    - 2.2.2. Effective Implementation of PC&PNDT Act
    - 2.2.3. Enabling Environment for value of girl child and promote her Education
    - 2.2.4. Training and Capacity building
    - 2.2.5. Advocacy, Community Mobilization and Awareness Raising
3. Data collection, Monitoring and Evaluation
4. Reporting and Documentation
5. Budgetary Provision for the districts

### Annexures :

- Appendix (1): Baseline data on Sex Ratio at Birth (SRB) for selected districts- (i.) 100 districts; (ii) 61 districts; (iii) 244 districts & (iv) 235 districts
- Appendix (2): Template for District Level Action Plan under BBBP
- Appendix (3): Action-points for Gram Panchayats on CSR as issued by Ministry of Panchayati Raj (MoPR)
- Appendix (4): Parameters for felicitation of Schools/Meritorious girls at the district level for promoting education for girls
- Appendix (5): *Guddi-Gudda* Board
- Appendix (6): Illustrative list of Innovative initiatives under Beti Bachao Beti Padhao

## **1. Districts covered**

- i. In Phase-I (Year 2014-15), the Scheme was started in 100 districts for focussed intervention and multi-sectoral action. These districts were identified on the basis of low Child Sex Ratio as per Census 2011 covering all States/UTs as a pilot with at least one district in each state.
- ii. In Phase-II (Year 2015-16), the Scheme was expanded in additional 61 districts covering 11 States for creating awareness and advocacy about the issue taking into account the criticality of the issue and performance of the scheme on ground.
- iii. In this short duration, BBBP has been well-received and favourable trends are visible in many of the districts. The scheme has been successful in establishing the improvement in Child Sex Ratio as a National Agenda. Based on the successful implementation in 161 districts, the Cabinet has approved the expansion of BBBP which would include Multi-sectoral intervention in 244 districts (in addition to existing 161 districts) and Alert District Media, Advocacy and Outreach in 235 districts, thus covering all the 640 districts (as per census 2011) of the Country to have a deeper positive impact on Child Sex Ratio.

The district-wise baseline data for Sex Ratio at Birth (SRB) in selected districts is placed at **Appendix-1** at (i) for 100 districts; (ii) for 61 districts; (iii) for 244 districts and (iv) for 235 districts.

## **2. Guidelines for strategic actions to be undertaken at district, block and village level:**

### **2.1. Mechanisms for planning, implementation and monitoring at District/Block and Gram Panchayat levels:**

#### **2.1.1 District (Action- DC)**

**Constitute District Task Force (DTF) headed by DC with representatives of line Departments (Health & Family Welfare; Education; Panchayati Raj/ Rural Development, domain experts with knowledge on gender, legal, community mobilization, district registrar and Police) to:**

- i. Develop District Action Plans through a consultative process involving Departments of Women and Child Development, Health and Education. A model template for District Level Action Plan under BBBP is at **Appendix-2**. Other line departments may also be consulted for formulation of plan.
- ii. Wherever urban local bodies/cities exist, the DAP will be formulated in consultation with Head of ULB/officer nominated by Municipal Commissioner to address the issue in urban context.
- iii. Other stakeholders may be called as Special Invitees for DTF meetings to establish convergence with different schemes and programmes.
- iv. Provide guidance for implementation of Multi-Sectoral action in the district.
- v. Undertake monthly review of the progress on the activities listed in the Department Plans of action at the district level.

- vi. Nominate Nodal Officer (Senior Official) from each Department for formulation, implementation and monitoring of District Action Plans under overall supervision of DC/DM.
- vii. Designate a Coordinating Officer amongst them to facilitate the process of formulation of District Action Plan.
- viii. Review the implementation of PC&PNDT Act. Follow-up with district Judge on PNDT cases and submit monthly report to the State Authority with copy to PNDT Division, MoHFW, GOI.
- ix. Establish linkages with:
  - Local NGOs/CBOs/SHGs working on the issues related to Gender, Child Sex Ratio, Education, Health, Gender based violence and Child Protection.
  - Schools, colleges, professional colleges and universities, NYKS and NSS to promote youth campaign on value of girl child and enable her education.
  - Voluntary Associations, Doctor's Associations, Teacher's Associations, Commercial Associations, Rotary Club, Lion's Club etc.
  - Corporates to mobilize resources under Corporate Social Responsibility.
- x. Undertake overall responsibility for measurable changes in identified indicators related to CSR/SRB, education related indicators (enrolment, retention and completion of secondary education).

The District Programme Officer (DPO) in the District ICDS Office/PNDT Cell or any other structure as deemed fit by the DC/DM will provide supervision and monitoring of the implementation of action plan in the district. DLCW, wherever functional provide day to day coordination related to implementation of activities on ground. In cities and urban areas, nominated officers by the Municipal Commissioner will coordinate with DC/DM for implementation of BBBP activities in urban areas.

Similar to DTF at district level, at the state level, a State Task Force headed by the Chief Secretary will monitor progress at regular intervals. At the apex level, a National Task Force headed by Secretary MWCD will monitor progress on a regular basis.

### **2.1.2 Block: (Action-Sub Divisional Magistrate/Sub Divisional Officer/Block Development Officer)**

- i. Constitute Block Task Force (BTF) headed by SDM/SDO/BDO
- ii. Ensure that Quarterly meeting of BTF are held on a regular basis
- iii. Ensure follow-up actions are taken in a time-bound manner

### **2.1.3 Gram Panchayat (Action-Sarpanch/ Pradhan)**

- i. Existing forum of Village Health Sanitation and Nutrition Committee (VHSNC), a sub-committee of Gram Panchayat, will have the responsibility of coordinating implementation and monitoring of action plan. (*Action-points for Gram Panchayats* on CSR circulated by Ministry of Panchayati Raj are to be followed in all the forums of Panchayats like Ward Sabha, Gram Sabha, Mahila Sabha and Gram Panchayats. *Action-points for Gram Panchayats* are enclosed in the Guidelines at **Appendix-3**).
- ii. Existing platform of VHSNC/Village Health and Nutrition Day to be used for creating awareness on schemes/programmes for women/girls, promote early registration of pregnancy, institutional deliveries, birth registration, equal care of girl child service delivery and counselling on *Beti Bachao, Beti Padhao*.

### **Timelines:**

- i. DCs should constitute District Task Force/Block Task Force within 1 month of approval of the scheme
- ii. Ensure first meeting of the DTF/BTF within a week of its constitution
- iii. Finalize activities alongwith the timelines in alignment with monitorable targets for district action plan within 15 days. The same should be submitted to MWCD for approval (with copy to DWCD/Social Welfare).
- iv. The District Action Plans will be rolled out as soon as the funds are transferred to the District to the designated BBBP account through PFMS.

## **2.2 Implementation Activities:**

### **2.2.1 Orientation and Sensitization**

#### **Orientation**

- i. Orientation of District Officers/ Zila Parishad members/ Judiciary/ District Level Centre for Women/District Legal Services Authority (DLSA)/NGOs/CBOs/Doctors for identifying role and responsibility (within 1<sup>st</sup> quarter of the roll out of the scheme).
- ii. Orientation of Block Officers/Block Parishad/ Panchayat Pradhans/ Sarpanches/ Front line workers-AWWs, ASHAs, ANMs/SHG members (over a continuum).
- iii. Orientation of Panchayat members, Village Health Sanitation and Nutrition Committee (VHSNC) members on tools for data collection/ Community Mobilization/dissemination of information on schemes and programmes/ Reporting on pregnancy, birth, immunization, enrolment, retention and completion of education in schools.



### **Sensitization**

- i. Sensitization of Member of Parliament (MP)/Members of Legislative Assembly (MLA)/Elected representatives/ Religious leaders/ Community leaders (within 1<sup>st</sup> quarter of the roll out of the scheme).
- ii. Sensitization of teachers on Child Sex Ratio through Sarva Shiksha Abhiyan (within 1<sup>st</sup> quarter of the roll out of the scheme).
- iii. Sensitization of Associations-Doctor's Associations, Teacher's Associations, Commercial Associations, Rotary Club, Lion's Club etc.

### **2.2.2 Effective Implementation of PC&PNDT Act**

- i. Selected districts to measure progress in SRB against the baseline data as given at **Appendix-1**. Against this, the progress of the proposed intervention will be measured on an annual basis. Further districts to correlate the information with other source of district level data for measuring the CSR, SRB.
- ii. Ensure 100% registration of births in the district especially through Civil Registration System (CRS).
- iii. Monitoring the Sex Ratio at Birth, block /GP/ Municipality wise through birth registration data to identify and develop focused action plan for more affected areas of the district.
- iv. All pregnancies are registered and complete ANC and post Natal services are provided to all women.
- v. All statutory bodies as District Advisory Committees under the PC&PNDT Act are constituted/ reconstituted and meetings are conducted at intervals mandated by the Act.
- vi. The formulation of District Inspection and monitoring Committees for conducting regular inspections and monitoring of the registered bodies under the Act.
- vii. Registration of all Genetic Laboratories, Genetic Counseling Centre and Genetic Clinics including IVF centres conducting pre-conception and pre-natal diagnostic counseling, test, procedure having potential for sex selection before/ after conception.
- viii. Maintenance of a comprehensive and detailed data base of the complaints / registrations/ renewals/ court cases/ convictions/ suspensions/ cancellations/ make and model of diagnostic equipment used in the diagnostic clinics, name and qualification of doctors conducting the diagnostic procedures/ test in the district for better monitoring and regulation.
- ix. Regular surveys of diagnostic centres (Genetic laboratories, Genetic Counseling Centres, Genetic Clinics/ Imaging Centres/ Ultrasound Clinics) capable of detecting/ determine the sex of the foetus to identify unregistered facilities.
- x. Maintenance and timely submission of the records by the registered facilities as prescribed under the PC&PNDT Act on 5<sup>th</sup> of the following month and analyze/ audit the record for effective monitoring and regulation.

- xi. Conducting decoys to unearth the illegal practice of sex selection in the District and coordinate with the neighboring District Appropriate Authorities to track inter district networks involved in illegal practice of sex selection.
- xii. Develop intelligence by instituting rewards for the informers.
- xiii. Follow up of court cases pending under the PC&PNDT Act and ensure the attendance of districts Appropriate Authority or person authorities on his/ her behalf in every hearing of the court case.
- xiv. Communication of the names of all the convicted doctors in the district to the Medical Council for necessary action under Section 23 (2) of the PC&PNDT Act.
- xv. Training of medical officers for conducting diagnostic procedures in Government facilities to ensure effective complete compliance of PNDT Act.
- xvi. Sensitization of all frontline workers (Health &WCD) towards girl child to ensure all Health and nutritional needs of Girl Child and to promote the special benefits provided to girl child through various programmes and schemes.
- xvii. Set up a functional anonymous complaint portal or platform.
- xviii. Utilization of the registration fee collected under the PC&PNDT Act for the effective implementation and monitoring of the Act.
- xix. Submission of regular monthly report on the status of implementation of PC&PNDT Act to the State Appropriate Authorities to help timely compilation of Quarterly Progress Reports for the State/ UT.
- xx. Bimonthly review meetings under the chairmanship of Districts Collector/ Magistrate.

*Note: However while implementing these interventions at the district/block/gram panchayat level; the aim should be to prohibit and regulate the illegal practice of sex selection / determination and not to track pregnancies. Interventions should not impede the implementation of MTP Act meant for providing safe abortion services to women as such steps can further victimize the women.*

### **2.2.3 Enabling environment for value & education of Girl Child**

- i. **Enabling environment for the birth of Girl Child** through the following:
  - Promote early registration of pregnancy in the first trimester at AWCs/Health Centres, ante natal care, post natal care and counseling of mothers for ensuring equal care of the infant girl through public awareness campaigns.
  - Improve service delivery of all schemes and programmes meant for women and girls
  - Promote effective implementation of Mother & Child Protection Card (MCPC) by AWWs/ASHAs-across the continuum.
  - Using fixed monthly village health and nutrition day-increase early registration of pregnancy and create peer support group of AWW, ASHA, ANM, other mothers for pregnant mother/mother of girl child and family to change societal norms.

- Identify community watch groups (women panchayat members, trained teacher, youth groups, others) and local response points such as ICPU, DLCW/MSK, Child Welfare Committees to ensure protective environment for girls.
  - Incentivise Schools/ Panchayat/ Urban ward/ Frontline worker/Community volunteer on annual basis.
  - Establish linkage/convergence with other departments
  - Identification of declaration of BBBP friendly village, panchayat, block, district/ urban local body
- ii. **Enable education** in order to
- Activate School Management Committees (SMCs) to ensure universal enrolment of girls through special drives- over a continuum.
  - Create Balika manches to encourage participation of girls in schools and to link out of school girls -over a continuum.
  - Link out of school with back to school or alternative education options.
  - Construct and ensure functional toilets for girls in schools Construct Kasturba Gandhi Bal Vidyalayas (KGBV) buildings Initiate Campaign to re-enroll drop-out, retention and completion of secondary education of girls –through massive joint village contact drive, using AWWs, ASHAs, PRIs, and Community/women/youth groups.
  - Identify Constraints to girl’s education-women researchers, uniforms, text books, toilets, transport/escort in safety, sibling, sibling care bureau, burdened with water/firewood collection etc.
  - Construct girls hostel for secondary and senior secondary schools
  - Operationalize standard guidelines/ protocols for Girl Child Friendly Schools including residential schools & ensure its effective implementation.
  - Institute district level awards, felicitation for promoting girl’s education(enrolment, retention, completion of education). Parameters for instituting awards is placed at **Appendix-4**.

#### 2.2.4 Training & Capacity-building

- **Mainstreaming Gender equality related concerns**

- i. **Integration of gender equality related concerns in curriculum** across the educational institutions with special emphasis on Medical Colleges.
- ii. **Integration of the girl child and gender equality related concerns in the training strategy of:**
  - Administrative, police, judicial, medical colleges and other training academies, such as LBSNAA, ATIs, CTIs.
- iii. Integration of Gender Concerns in the recruitment of personnel at district level.
- iv. **Strengthen capacities of the existing training institutions of the relevant Departments-** including through Gender and Girl Child Units - to impart effective training on Gender Sensitization and issues related to the CSR, equal value of girl child.
- v. **Inclusion/ Integration of BBBP and gender equality related concerns into the training curricula and modules of relevant flagship programmes/schemes** such as ICDS, MSK, NHM, SSA, NRLM, MGNREGA, TSC etc. and that of PRIs, ULBs, women’s SHGs and youth groups.

- **Capacity-building**
  - i. **Undertake training of Frontline workers such as AWWs/ ASHAs** to enhance their understanding on Issue of declining CSR, gender biased sex selection, other forms of discrimination against girl child and their social impact; implementation of PC&PNDT Act; manage and monitor relevant data, & facilitate convergence on ground.
  - ii. **Train District Appropriate Authorities & other functionaries under the PC& PNDT Act**
  - iii. **Build capacities of the existing training institutions working with youth groups and Sabla groups**
    - To enable these groups to emerge as change agents (local champions and community volunteers) for improving the CSR and ending gender based violence.

### 2.2.5 Advocacy, Community mobilization & Awareness Generation

- i. **Display of Guddi-Gudda Boards in gram panchayats and public places** to exhibit number of girls born vis-a-vis number of boys and create opportunities for discussion and debate around importance of girls (A format of Guddi Gudda board is placed at **Appendix-5**).
- ii. **Community Mobilization and Outreach** through interactive initiatives like *Naari ki Chaupal*<sup>3</sup>, *Beti Janmotsav*, *Mann ki Baat*, etc. may be initiated to spread the message of *Beti Bachao Beti Padhao*.
- iii. **Dedicate a special day** every month for celebration of *Beti Bachao, Beti Padhao*.
- iv. **National Girl Child Day** may be celebrated on 24<sup>th</sup> January every year by all stakeholders including local opinion makers, PRI Members, MLAs, MPs etc. at District levels, led by the District Administrations..
- v. **International Women's Day** may be celebrated in order to send out a strong message highlighting the importance of gender equality, creating value around girl child and importance of empowering women and girls. Further, celebration of this Day can be used to highlight the contribution of empowered mothers to the BBBP Scheme.
- vi. **Pledge** for protection, safety, value and education of the girl child may be adopted by Govt. of India and the same may be taken on the occasion of National Girl Child Day by DC/DM along with other government functionaries. The Pledge shall be in Hindi and English and States/UTs may get the translation of the same done in regional languages for dissemination in the Districts.
- vii. **Encouraging reversal of son centric rituals and customs** may be done through the following:
  - ✓ Advocacy efforts and community mobilization initiatives like celebrating *Lohri* for the birth of a daughter, siblings tying *rakhis* to each other on *Raksha Bandhan*, encouraging forgotten age old, progressive concepts like *ardhangini* (an equal life partner) etc.

---

<sup>1</sup>*Naari Ki Chaupal* aims to create a vibrant meeting space that enables a large number of community groups, civil society organizations and women from various communities to come together, reflect and have a dialogue on issues that affect women with an approach towards finding solutions.

- ✓ Social customs which promote men and boys over women and girls may be targeted and reversed gradually in order to foster gender equality as a long term goal and bring about social and behavioural change with regard to son preference and sex selection.
- viii. **Inclusion of Local Religious/Spiritual Leaders** in advocacy and community mobilization initiatives may be done in order to enhance the acceptance of such efforts by the community.
- ix. **Positive Reinforcements of Daughters** need be done as providers of old age security. It needs to be highlighted that daughters look after parents in their old age as much as sons do and sometimes even more<sup>4</sup>.
- x. **Promotion of Simple Weddings** may be done to protect parents from financial burden of dowry and ostentatious marriage ceremonies. *Samuhik Vivahs* may be promoted too.
- xi. **Promotion of Equal Property Rights** for daughters & sons may be done in the community through community mobilization initiatives.
- xii. **Prevention of Early/Child Marriage** may be done aggressively in order to highlight the importance of allowing girls to complete their school education and preferably opt for higher education/career/skill building/vocational education etc. Special efforts need to be made for prevention of the same on a massive scale in North India, organized on a massive scale in North India.
- xiii. **Email Signatures of Government officials** may have the embedded social message of *Beti Bachao Beti Padhao* for creating a brand identity and ownership of the Campaign at District Levels. NIC or any other appropriate body at State/UT can facilitate the same
- xiv. **Support may be extended to the following national activities by DC/DM:**
  - ✓ **Field Publicity** by the Song and Drama Division of Ministry of Information and Broadcasting
  - ✓ **Display of Posters and other IEC material:** Efforts may be made to organize display of Posters and any other IEC material related to the Campaign in schools, primary health centres, block and district level hospitals, Anganwadi Centres, and Panchayat Bhawans etc.
  - ✓ **Mobile Exhibition Vans** to be aligned with community mobilizing efforts.
- xv. **Encouraging Effective Use of Social Media:** A variety of social media platforms may be used for pushing positive messages out. Social media initiatives may be pushed rigorously as these do not have any financial implications. The following ways and means are suggested:
  - ✓ Inform and encourage people to like Facebook, Twitter handles, G+ etc. of PMO, MWCD, MoI&B, MoHRD and MoH&FW etc. leading to a large online support base for BBBP.
  - ✓ Encourage communities, especially youth, to access the *Beti Bachao Beti Padhao* YouTube Channel (through desktop/mobile phone), created for screening a pool of relevant films and appropriate audio visual content drawn from all over the country, forming a playlist. This play list of online content should be used for the purpose of screening (live and as downloaded).

---

<sup>4</sup> Examples of breaking age old tradition such as daughters performing last rites of their parents, allowing mothers to participate in religious activities involving marriage should be promoted to send out progressive message across the community.

- ✓ Encourage Community/LocalBBBP Champions who have defied social norms for the cause of the girl child to contribute personal stories of triumphs and tribulations to this channel.
  - ✓ DM/DC may consider engaging with people live through Google Hangout which can lead to manifold increase in the subscriber base of BBBP social media platforms.
- xvi. **Local BBBP Champions:** All The efforts suggested above may be lead by strategic involvement of local opinion and change makers who can set positive examples and serve as Local Champions. Some suggested activities are given below:
- ✓ Peer sharing and learning reinforced by community support groups along with pressure created by culturally appropriate local media may be done.
  - ✓ DC/DM may reach out to MLAs, Parliamentarians, elected women representatives of PRIs and ULBs etc. to serve as Local Champions of this campaign.
  - ✓ Senior Officials from PSUs/Private Sector may be encouraged to promote the issue at their level.
  - ✓ Government functionaries at grass roots level like AWW, ASHAs, CDPOs etc. may serve the role of Champions to promote education for girls.
  - ✓ Reward and Recognition:
  - ✓ Identify individuals or civil society organizations which do exemplary work towards implementation of BBBP Scheme for recommendation by DCs for courage meritorious girls from the fields of academics/sports/culture/social work/science etc.
  - ✓ Felicitate/incentivise meritorious girls and *their families with cash/token* appreciation on BBBP Day/National Girl Child Day/International Women's Day/Independence Day/Republic Day etc.
  - ✓ Highlight exemplary case studies of girls coming up despite odds, stories of families which have promoted daughters despite their struggles in local media. Such stories will not only ensure media coverage but also set positive examples, leading to mind set change of the target population.

**Timeline:** All the community mobilization & outreach programmes need to be staggered through-out the year to keep the momentum of the Campaign going. The DC/DM may workout the detailed and customized District Action Plan with timeline for each activity to accommodate district specific needs and requirements.

An illustrative list of innovative activities undertaken by various districts under BBBP is placed at **Appendix-5**

### 3. Data Collection, Monitoring and Evaluation:

- i. Develop/Finalize tools & formats for data collection/ Reporting/ Monitoring
- ii. Collect Primary Data & Compile Secondary data on SRB&CSR indicators from allied departments including HMIS, Civil Registration System (CRS) and U-DISE. Attention to be paid on correct capturing of data by functionaries.
- iii. Validation of data may be undertaken from time to time. Monitor birth registration and Sex Ratio at Birth (SRB) through the AWW, ASHAs & Panchayats

- iv. Monitor implementation of PC&PNDT Act in terms of registrations/ cancellation/ raids/inspections/decoy operations/court cases/ complaints/ convictions and thorough mapping/survey exercises through state/ district Appropriate Authorities
- v. Identify unregistered machines in the district with support from Grassroots functionaries/Community Volunteers
- vi. Monitor ANC registration/ checkup, immunization of girl child, birth registrations by Grass roots functionaries (ASHAs/ANMs/AWWs) & community volunteers. Data may be collated at block level & compiled block-wise report may be submitted every month to DCs
- vii. Monitor the Scheme, analyse, interpret and take corrective action at appropriate levels

#### **4. Reporting & Documentation**

It is important to document all activities conducted at the District, Block & Gram Panchayat Level, related to the Scheme and Campaign, through regular reports, MIS and photographic documentation. At the district level, a Nodal Officer would be responsible for process & progress documentation. The PMU of BBBP at the National level will compile the monthly reports received from States and may produce quarterly Newsletters. The districts must undertake yearly documentation of process, innovative interventions, best practices and community mobilization initiatives may be brought out and shared with WCD under information of DWCD of the concerned State/UT.

**5. Budgetary Provision for the districts:**

| <b>District Level Norms</b> |   |                    |                      | <b>In lakhs</b>          |
|-----------------------------|---|--------------------|----------------------|--------------------------|
| <b>Sl. No</b>               | <b>Item</b>   | <b>No of units</b> | <b>Cost per unit</b> | <b>Budgetary Ceiling</b> |
| <b>1</b>                    | <b>(iii) Inter-sectoral Consultation, Meetings of DTF, BTF and Media Campaign<br/>(iv) Training &amp; Capacity building/sensitization programme</b> |                    |                      | <b>8</b>                 |
| <b>2</b>                    | <b>(iii) Innovation and Outreach<br/>(iv) IEC material/awareness kit to Anganwadi Centers</b>   |                    |                      | <b>25</b>                |
| <b>3</b>                    | <b>Monitoring, Evaluation and Documentation</b>   |                    |                      | <b>3</b>                 |
| <b>4</b>                    | <b>Sectoral activities of M/O HRD</b>   |                    |                      | <b>5</b>                 |
| <b>5</b>                    | <b>Sectoral activities of M/O H&amp;FW</b>  |                    |                      | <b>5</b>                 |
| <b>6</b>                    | <b>Flexi Fund (10%)</b>   |                    |                      | <b>4</b>                 |
| <b>7</b>                    | <b>Total</b>  |                    |                      | <b>50</b>                |



**Appendix 1**

| <b>(i) Base line data for 100 districts of BBBP on SRB (HIMS, MHFW Data)<br/>-Districts selected in Phase-I</b> |                           |                            |                           |                           |                           |
|---|---------------------------|----------------------------|---------------------------|---------------------------|---------------------------|
| <b>SN</b>   | <b>Name of State / UT</b> | <b>Number of Districts</b> | <b>2014-15(APR-MARCH)</b> | <b>2015-16(APR-MARCH)</b> | <b>2016-17(APR-MARCH)</b> |
|   | <b>INDIA</b>              |                            |                           |                           |                           |
| 1.  | Gujarat (5)               | Surat                      | 879                       | 886                       | 872                       |
| 2.  |                           | Mahesana                   | 900                       | 919                       | 910                       |
| 3.  |                           | Gandhinagar                | 885                       | 883                       | 902                       |
| 4.  |                           | Ahmadabad                  | 873                       | 903                       | 915                       |
| 5.  |                           | Rajkot                     | 886                       | 906                       | 872                       |
| 6.  | Haryana (12)              | Mahendragarh               | 791                       | 809                       | 859                       |
| 7.  |                           | Jhajjar                    | 838                       | 872                       | 897                       |
| 8.  |                           | Rewari                     | 803                       | 845                       | 851                       |
| 9.  |                           | Sonipat                    | 864                       | 869                       | 898                       |
| 10.   |                           | Ambala                     | 870                       | 877                       | 915                       |
| 11.   |                           | Kurukshetra                | 843                       | 864                       | 881                       |
| 12.   |                           | Rohtak                     | 915                       | 881                       | 893                       |
| 13.   |                           | Karnal                     | 758                       | 883                       | 854                       |
| 14.   |                           | Yamunanagar                | 887                       | 896                       | 912                       |
| 15.   |                           | Kaithal                    | 887                       | 868                       | 899                       |
| 16.   |                           | Bhiwani                    | 822                       | 859                       | 860                       |
| 17.   |                           | Panipat                    | 901                       | 898                       | 941                       |
| 18.   | Himachal Pradesh (1)      | Una                        | 857                       | 904                       | 931                       |
| 19.   | Jammu & Kashmir (5)       | Jammu                      | 911                       | 886                       | 908                       |
| 20.   |                           | Pulwama                    | 983                       | 949                       | 1018                      |
| 21.   |                           | Kathua                     | 862                       | 873                       | 852                       |
| 22.   |                           | Badgam                     | 972                       | 988                       | 968                       |
| 23.   |                           | Anantnag                   | 985                       | 1000                      | 976                       |
| 24.   | Madhya Pradesh (4)        | Morena                     | 904                       | 909                       | 926                       |
| 25.   |                           | Gwalior                    | 888                       | 918                       | 906                       |
| 26.   |                           | Bhind                      | 919                       | 898                       | 929                       |
| 27.   |                           | Datia                      | 887                       | 880                       | 895                       |
| 28.   | Maharashtra (10)          | Bid                        | 913                       | 898                       | 925                       |
| 29.   |                           | Jalgaon                    | 864                       | 898                       | 901                       |
| 30.   |                           | Ahmadnagar                 | 904                       | 906                       | 895                       |
| 31.   |                           | Buldana                    | 934                       | 954                       | 913                       |
| 32.   |                           | Aurangabad                 | 917                       | 929                       | 927                       |
| 33.   |                           | Washim                     | 974                       | 903                       | 910                       |
| 34.   |                           | Kolhapur                   | 889                       | 903                       | 881                       |
| 35.   |                           | Osmanabad                  | 883                       | 909                       | 912                       |

|     |                       |                               |     |     |     |
|-----|-----------------------|-------------------------------|-----|-----|-----|
| 36. |                       | Sangli                        | 885 | 889 | 893 |
| 37. |                       | Jalna                         | 901 | 887 | 900 |
| 38. | NCT of Delhi<br>(5)   | South West                    | 878 | 881 | 875 |
| 39. |                       | North West                    | 898 | 899 | 911 |
| 40. |                       | East                          | 888 | 918 | 900 |
| 41. |                       | West                          | 868 | 881 | 915 |
| 42. |                       | North                         | 913 | 904 | 930 |
| 43. | Punjab (11)           | Tarn Taran                    | 874 | 880 | 889 |
| 44. |                       | Gurdaspur                     | 879 | 866 | 881 |
| 45. |                       | Amritsar                      | 897 | 909 | 892 |
| 46. |                       | Muktsar                       | 899 | 896 | 889 |
| 47. |                       | Mansa                         | 857 | 925 | 894 |
| 48. |                       | Patiala                       | 847 | 866 | 890 |
| 49. |                       | Sangrur                       | 864 | 848 | 879 |
| 50. |                       | Sahibzada Ajit<br>Singh Nagar | 955 | 936 | 910 |
| 51. |                       | Fatehgarh<br>Sahib            | 873 | 889 | 928 |
| 52. |                       | Barnala                       | 855 | 836 | 893 |
| 53. |                       | Firozpur                      | 876 | 859 | 871 |
| 54. | Rajasthan<br>(10)     | Jhunjhunun                    | 893 | 903 | 952 |
| 55. |                       | Sikar                         | 939 | 923 | 963 |
| 56. |                       | Karauli                       | 942 | 927 | 914 |
| 57. |                       | Ganganagar                    | 918 | 934 | 952 |
| 58. |                       | Dhaulpur                      | 930 | 924 | 945 |
| 59. |                       | Jaipur                        | 912 | 904 | 928 |
| 60. |                       | Dausa                         | 930 | 921 | 932 |
| 61. |                       | Alwar                         | 915 | 912 | 931 |
| 62. |                       | Bharatpur                     | 933 | 922 | 914 |
| 63. |                       | Sawai<br>Madhopur             | 947 | 913 | 908 |
| 64. | Uttar Pradesh<br>(10) | Baghpat                       | 919 | 903 | 882 |
| 65. |                       | Gautam<br>Buddha Nagar        | 844 | 873 | 875 |
| 66. |                       | Ghaziabad                     | 899 | 977 | 908 |
| 67. |                       | Meerut                        | 866 | 878 | 884 |
| 68. |                       | Bulandshahr                   | 866 | 864 | 902 |
| 69. |                       | Agra                          | 876 | 842 | 905 |
| 70. |                       | Muzaffarnagar                 | 884 | 909 | 931 |
| 71. |                       | Mahamaya<br>Nagar             | 867 | 884 | 885 |
| 72. |                       | Jhansi                        | 860 | 900 | 925 |
| 73. |                       | Mathura                       | 900 | 913 | 876 |

|      |                      |                      |      |      |      |
|------|----------------------|----------------------|------|------|------|
| 74.  | Uttarakhand          | Pithoragarh          | 881  | 901  | 873  |
| 75.  | (2)                  | Champawat            | 887  | 959  | 973  |
| 76.  | Andaman & Nicobar    | Nicobars             | 985  | 948  | 839  |
| 77.  | Andhra Pradesh       | Y.S.R.               | 944  | 900  | 974  |
| 78.  | Arunachal Pradesh    | Dibang Valley        | 1073 | 761  | 1176 |
| 79.  | Assam                | Kamrup Metropolitan  | 942  | 969  | 950  |
| 80.  | Bihar                | Vaishali             | 915  | 887  | 879  |
| 81.  | Chandigarh           | Chandigarh           | 874  | 906  | 921  |
| 82.  | Chhattisgarh         | Raigarh              | 926  | 928  | 934  |
| 83.  | Dadra & Nagar Haveli | Dadra & Nagar Haveli | 942  | 951  | 934  |
| 84.  | Daman & Diu          | Daman                | 918  | 919  | 946  |
| 85.  | Goa                  | North Goa            | 916  | 910  | 951  |
| 86.  | Jharkhand            | Dhanbad              | 861  | 890  | 914  |
| 87.  | Karnataka            | Bijapur              | 948  | 941  | 968  |
| 88.  | Kerala               | Thrissur             | 959  | 965  | 942  |
| 89.  | Tripura              | South Tripura        | 953  | 915  | 978  |
| 90.  | Manipur              | Senapati             | 991  | 974  | 980  |
| 91.  | Meghalaya            | Ribhoi               | 949  | 975  | 940  |
| 92.  | Mizoram              | Saiha                | 915  | 1022 | 898  |
| 93.  | Nagaland             | Longleng             | 954  | 984  | 942  |
| 94.  | Odisha               | Nayagarh             | 845  | 883  | 860  |
| 95.  | Puducherry           | Yanam                | 1107 | 981  | 976  |
| 96.  | Sikkim               | North District       | 831  | 1009 | 1011 |
| 97.  | Tamil Nadu           | Cuddalore            | 856  | 937  | 931  |
| 98.  | Telengana            | Hyderabad            | 946  | 938  | 967  |
| 99.  | Lakshadweep          | Lakshadweep          | 1000 | 832  | 955  |
| 100. | West Bengal          | Kolkata              | 922  | 929  | 939  |

| <b>(ii) Base line data on SRB for 61 districts of BBBP (HIMS, MHFW Data)<br/>-Districts selected in Phase-II</b> |                           |                            |                           |                           |
|--|---------------------------|----------------------------|---------------------------|---------------------------|
| <b>SN</b>  | <b>Name of State / UT</b> | <b>Number of Districts</b> | <b>2015-16(APR-MARCH)</b> | <b>2016-17(APR-MARCH)</b> |
|  | <b>INDIA</b>              |                            |                           |                           |
| 1.   | Gujarat (4)               | Anand                      | 924                       | 931                       |
| 2.   |                           | Amreli                     | 916                       | 911                       |
| 3.   |                           | Patan                      | 945                       | 936                       |
| 4.   |                           | Bhavnagar                  | 902                       | 873                       |
| 5.   | Haryana (8)               | Gurgaon                    | 887                       | 892                       |
| 6.   |                           | Jind                       | 866                       | 913                       |
| 7.   |                           | Faridabad                  | 890                       | 894                       |
| 8.   |                           | Hisar                      | 910                       | 927                       |
| 9.   |                           | Fatehabad                  | 895                       | 927                       |
| 10.  |                           | Sirsa                      | 941                       | 911                       |
| 11.  |                           | Panchkula                  | 887                       | 929                       |
| 12.  |                           | Palwal                     | 921                       | 935                       |
| 13.  | Himachal Pradesh (2)      | Kangra                     | 887                       | 897                       |
| 14.  |                           | Hamirpur                   | 849                       | 943                       |
| 15.  | Jammu & Kashmir (10)      | Samba                      | 908                       | 884                       |
| 16.  |                           | Baramula                   | 948                       | 994                       |
| 17.  |                           | Ganderbal                  | 985                       | 992                       |
| 18.  |                           | Rajouri                    | 947                       | 937                       |
| 19.  |                           | Srinagar                   | 957                       | 980                       |
| 20.  |                           | Shupiyan                   | 1062                      | 959                       |
| 21.  |                           | Kupwara                    | 1027                      | 961                       |
| 22.  |                           | Kulgam                     | 1057                      | 1087                      |
| 23.  |                           | Udhampur                   | 880                       | 881                       |
| 24.  |                           | Bandipore                  | 964                       | 885                       |
| 25.  | Madhya Pradesh (2)        | Rewa                       | 913                       | 917                       |
| 26.  |                           | Tikamgarh                  | 917                       | 917                       |
| 27.  | Maharashtra (6)           | Hingoli                    | 953                       | 916                       |
| 28.  |                           | Solapur                    | 878                       | 910                       |
| 29.  |                           | Pune                       | 911                       | 889                       |
| 30.  |                           | Parbhani                   | 941                       | 911                       |
| 31.  |                           | Nashik                     | 922                       | 913                       |
| 32.  |                           | Latur                      | 929                       | 940                       |
| 33.  | NCT of Delhi (2)          | North East                 | 920                       | 960                       |
| 34.  |                           | South                      | 916                       | 899                       |
| 35.  | Punjab (9)                | Faridkot                   | 899                       | 909                       |
| 36.  |                           | Bathinda                   | 885                       | 888                       |
| 37.  |                           | Ludhiana                   | 881                       | 935                       |

|     |                    |                              |     |     |
|-----|--------------------|------------------------------|-----|-----|
| 38. |                    | Moga                         | 919 | 928 |
| 39. |                    | Rupnagar                     | 920 | 927 |
| 40. |                    | Hoshiarpur                   | 905 | 914 |
| 41. |                    | Kapurthala                   | 884 | 905 |
| 42. |                    | Jalandhar                    | 919 | 892 |
| 43. |                    | Shahid Bhagat<br>Singh Nagar | 918 | 904 |
| 44. | Rajasthan (4)      | Jaisalmer                    | 925 | 914 |
| 45. |                    | Hanumangarh                  | 971 | 973 |
| 46. |                    | Jodhpur                      | 948 | 949 |
| 47. |                    | Tonk                         | 926 | 978 |
| 48. | Uttar Pradesh (11) | Etawah                       | 902 | 911 |
| 49. |                    | Aligarh                      | 814 | 854 |
| 50. |                    | Etah                         | 897 | 878 |
| 51. |                    | Firozabad                    | 890 | 940 |
| 52. |                    | Jalaun                       | 884 | 905 |
| 53. |                    | Bijnor                       | 894 | 873 |
| 54. |                    | Mainpuri                     | 840 | 871 |
| 55. |                    | Hamirpur                     | 818 | 839 |
| 56. |                    | Saharanpur                   | 906 | 909 |
| 57. |                    | Farrukhabad                  | 880 | 886 |
| 58. |                    | Mahoba                       | 873 | 921 |
| 59. | Uttarakhand (3)    | Hardwar                      | 876 | 917 |
| 60. |                    | Dehradun                     | 933 | 923 |
| 61. |                    | Chamoli                      | 944 | 894 |

| <b>(iii) Base line data on SRB for Multisectoral Action in 244 districts of BBBP (HIMS, MHFW Data)</b> |                                  |                             |                           |
|--|----------------------------------|-----------------------------|---------------------------|
| <b>SN</b>  | <b>Name of State / UT</b>        | <b>Number of Districts</b>  | <b>2016-17(APR-MARCH)</b> |
| 1  | <b>Andhra Pradesh</b><br>(07)    | Anantapur                   | 971                       |
| 2  |                                  | Chittoor                    | 949                       |
| 3  |                                  | Prakasam                    | 936                       |
| 4  |                                  | Krishna                     | 945                       |
| 5  |                                  | Kurnool                     | 944                       |
| 6  |                                  | Sri Potti Sriramulu Nellore | 943                       |
| 7  |                                  | Guntur                      | 847                       |
| 8  | <b>Arunachal Pradesh</b><br>(05) | West Siang                  | 971                       |
| 9  |                                  | Upper Siang                 | 917                       |
| 10   |                                  | Lower Dibang Valley         | 918                       |
| 11   |                                  | Kurung Kumey                | 934                       |
| 12   |                                  | East Kameng                 | 805                       |
| 13   | <b>Bihar</b><br>(16)             | Patna                       | 918                       |
| 14   |                                  | Muzaffarpur                 | 894                       |
| 15   |                                  | Bhojpur                     | 940                       |
| 16   |                                  | Begusarai                   | 904                       |
| 17   |                                  | Lakhisarai                  | 914                       |
| 18   |                                  | Samastipur                  | 948                       |
| 19   |                                  | Saran                       | 925                       |
| 20   |                                  | Khagaria                    | 943                       |
| 21   |                                  | Rohtas                      | 918                       |
| 22   |                                  | Nalanda                     | 896                       |
| 23   |                                  | Purba Champaran             | 944                       |
| 24   |                                  | Madhubani                   | 922                       |
| 25   |                                  | Bhagalpur                   | 944                       |
| 26   |                                  | Sheikhpura                  | 911                       |
| 27   |                                  | Banka                       | 931                       |
| 28   |                                  | Nawada                      | 912                       |
| 29   | <b>Chhattisgarh</b>              | Bijapur                     | 985                       |
| 30   | <b>Daman &amp; Diu</b>           | Diu                         | 917                       |
| 31   | <b>Gujarat</b><br>(13)           | Surendranagar               | 915                       |
| 32   |                                  | Kheda                       | 915                       |
| 33   |                                  | Vadodara                    | 937                       |
| 34   |                                  | Banas Kantha                | 962                       |
| 35   |                                  | Porbandar                   | 899                       |

|    |                            |                     |      |
|----|----------------------------|---------------------|------|
| 36 |                            | Sabar Kantha        | 1160 |
| 37 |                            | Jamnagar            | 943  |
| 38 |                            | Junagadh            | 912  |
| 39 |                            | Kachchh             | 907  |
| 40 |                            | Valsad              | 935  |
| 41 |                            | Panch Mahals        | 961  |
| 42 |                            | Narmada             | 911  |
| 43 |                            | Dohad               | 891  |
| 44 | <b>Haryana</b>             | Mewat               | 934  |
| 45 | <b>Himachal Pradesh</b>    | Solan               | 950  |
| 46 | (05)                       | Bilaspur            | 875  |
| 47 |                            | Mandi               | 902  |
| 48 |                            | Shimla              | 895  |
| 49 |                            | Sirmaur             | 901  |
| 50 | <b>Jammu &amp; Kashmir</b> | Punch               | 897  |
| 51 | (06)                       | Reasi               | 936  |
| 52 |                            | Kishtwar            | 879  |
| 53 |                            | Ramban              | 898  |
| 54 |                            | Doda                | 855  |
| 55 |                            | Leh(Ladakh)         | 851  |
| 56 | <b>Jharkhand</b>           | Hazaribagh          | 904  |
| 57 | (11)                       | Giridih             | 1055 |
| 58 |                            | Bokaro              | 959  |
| 59 |                            | Kodarma             | 918  |
| 60 |                            | Ramgarh             | 937  |
| 61 |                            | Ranchi              | 976  |
| 62 |                            | Purbi Singhbhum     | 994  |
| 63 |                            | Palamu              | 927  |
| 64 |                            | Saraikela-Kharsawan | 966  |
| 65 |                            | Deoghar             | 1087 |
| 66 |                            | Jamtara             | 961  |
| 67 | <b>Karnataka</b>           | Bagalkot            | 905  |
| 68 | (04)                       | Haveri              | 910  |
| 69 |                            | Gadag               | 927  |
| 70 |                            | Dakshina Kannada    | 898  |
| 71 | <b>Madhya Pradesh</b>      | Shivpuri            | 954  |
| 72 | (36)                       | Sheopur             | 976  |

|     |                             |                       |     |
|-----|-----------------------------|-----------------------|-----|
| 73  |                             | Chhatarpur            | 910 |
| 74  |                             | Indore                | 928 |
| 75  |                             | Satna                 | 948 |
| 76  |                             | Guna                  | 918 |
| 77  |                             | Narsimhapur           | 926 |
| 78  |                             | Sehore                | 924 |
| 79  |                             | Sidhi                 | 949 |
| 80  |                             | Panna                 | 964 |
| 81  |                             | Dewas                 | 921 |
| 82  |                             | Hoshangabad           | 935 |
| 83  |                             | Rajgarh               | 926 |
| 84  |                             | Shajapur              | 956 |
| 85  |                             | Bhopal                | 941 |
| 86  |                             | Ashoknagar            | 942 |
| 87  |                             | Singrauli             | 941 |
| 88  |                             | Jabalpur              | 963 |
| 89  |                             | Burhanpur             | 954 |
| 90  |                             | Sagar                 | 921 |
| 91  |                             | Vidisha               | 959 |
| 92  |                             | Mandsaur              | 962 |
| 93  |                             | Neemuch               | 923 |
| 94  |                             | Dhar                  | 964 |
| 95  |                             | Damoh                 | 906 |
| 96  |                             | Ujjain                | 919 |
| 97  |                             | East Nimar (Khandwa)  | 940 |
| 98  |                             | Raisen                | 951 |
| 99  |                             | West Nimar (Khargone) | 911 |
| 100 |                             | Ratlam                | 917 |
| 101 |                             | Katni                 | 940 |
| 102 |                             | Jhabua                | 931 |
| 103 |                             | Umaria                | 954 |
| 104 |                             | Barwani               | 926 |
| 105 |                             | Anuppur               | 915 |
| 106 |                             | Seoni                 | 938 |
| 107 | <b>Maharashtra<br/>(15)</b> | Satara                | 925 |
| 108 |                             | Dhule                 | 884 |
| 109 |                             | Nanded                | 942 |
| 110 |                             | Akola                 | 940 |
| 111 |                             | Mumbai Suburban*      | N.A |



|     |                     |               |      |
|-----|---------------------|---------------|------|
| 112 |                     | Mumbai City*  | N.A  |
| 113 |                     | Wardha        | 913  |
| 114 |                     | Sindhudurg    | 902  |
| 115 |                     | Yavatmal      | 930  |
| 116 |                     | Thane         | 938  |
| 117 |                     | Nagpur        | 944  |
| 118 |                     | Raigarh       | 930  |
| 119 |                     | Amravati      | 964  |
| 120 |                     | Ratnagiri     | 896  |
| 121 |                     | Nandurbar     | 931  |
| 122 | <b>Manipur</b>      | Tamenglong    | 947  |
| 123 | (07)                | Chandel       | 926  |
| 124 |                     | Ukhrul        | 993  |
| 125 |                     | Bishnupur     | 967  |
| 126 |                     | Thoubal       | 986  |
| 127 |                     | Imphal East   | 924  |
| 128 |                     | Churachandpur | 944  |
| 129 | <b>Mizoram</b>      | Serchhip      | 1150 |
| 130 | <b>Nagaland</b>     | Mon           | 1015 |
| 131 | (06)                | Phek          | 946  |
| 132 |                     | Tuensang      | 931  |
| 133 |                     | Peren         | 831  |
| 134 |                     | Mokokchung    | 839  |
| 135 |                     | Wokha         | 954  |
| 136 | <b>NCT of Delhi</b> | New Delhi     | 920  |
| 137 | (02)                | Central       | 882  |
| 138 | <b>Odisha</b>       | Dhenkanal     | 946  |
| 139 | (14)                | Anugul        | 930  |
| 140 |                     | Ganjam        | 925  |
| 141 |                     | Cuttack       | 958  |
| 142 |                     | Khordha       | 970  |
| 143 |                     | Debagarh      | 940  |
| 144 |                     | Sundargarh    | 854  |
| 145 |                     | Sambalpur     | 937  |
| 146 |                     | Kendrapara    | 860  |
| 147 |                     | Jajapur       | 935  |
| 148 |                     | Jharsuguda    | 960  |
| 149 |                     | Bhadrak       | 974  |
| 150 |                     | Baleshwar     | 976  |

|     |                              |                 |      |
|-----|------------------------------|-----------------|------|
| 151 |                              | Kalahandi       | 950  |
| 152 | <b>Rajasthan</b><br>(19)     | Bundi           | 950  |
| 153 |                              | Jalor           | 950  |
| 154 |                              | Sirohi          | 950  |
| 155 |                              | Nagaur          | 962  |
| 156 |                              | Pali            | 973  |
| 157 |                              | Kota            | 1006 |
| 158 |                              | Ajmer           | 952  |
| 159 |                              | Churu           | 981  |
| 160 |                              | Rajsamand       | 934  |
| 161 |                              | Barmer          | 899  |
| 162 |                              | Bikaner         | 958  |
| 163 |                              | Jhalawar        | 912  |
| 164 |                              | Chittaurgarh    | 915  |
| 165 |                              | Baran           | 952  |
| 166 |                              | Dungarpur       | 947  |
| 167 |                              | Banswara        | 945  |
| 168 |                              | Udaipur         | 964  |
| 169 |                              | Bhilwara        | 883  |
| 170 |                              | Pratapgarh      | 959  |
| 171 | <b>Tamil Nadu</b><br>(10)    | Ariyalur        | 953  |
| 172 |                              | Dharmapuri      | 939  |
| 173 |                              | Namakkal        | 942  |
| 174 |                              | Salem           | 973  |
| 175 |                              | Perambalur      | 977  |
| 176 |                              | Viluppuram      | 959  |
| 177 |                              | Tiruvannamalai  | 933  |
| 178 |                              | Thiruvallur     | 959  |
| 179 |                              | Tiruchirappalli | 957  |
| 180 |                              | Chennai         | 939  |
| 181 | <b>Telenagana</b><br>(07)    | Warangal*       | N.A  |
| 182 |                              | Nalgonda        | 961  |
| 183 |                              | Mahbubnagar     | 944  |
| 184 |                              | Rangareddy*     | N.A  |
| 185 |                              | Adilabad        | 950  |
| 186 |                              | Karimnagar      | 940  |
| 187 |                              | Nizamabad       | 943  |
| 188 | <b>Uttar Pradesh</b><br>(47) | Kanpur Nagar    | 878  |
| 189 |                              | Varanasi        | 882  |

|     |                              |     |
|-----|------------------------------|-----|
| 190 | Allahabad                    | 963 |
| 191 | Kanshiram Nagar              | 940 |
| 192 | Auraiya                      | 909 |
| 193 | Kanpur Dehat                 | 930 |
| 194 | Kannauj                      | 911 |
| 195 | Budaun                       | 970 |
| 196 | Hardoi                       | 955 |
| 197 | Ballia                       | 884 |
| 198 | Mirzapur                     | 976 |
| 199 | Banda                        | 945 |
| 200 | Sant Ravidas Nagar (Bhadohi) | 873 |
| 201 | Shahjahanpur                 | 940 |
| 202 | Jyotiba Phule Nagar          | 914 |
| 203 | Bareilly                     | 921 |
| 204 | Chitrakoot                   | 936 |
| 205 | Fatehpur                     | 824 |
| 206 | Ghazipur                     | 961 |
| 207 | Gorakhpur                    | 964 |
| 208 | Chandauli                    | 901 |
| 209 | Pilibhit                     | 988 |
| 210 | Lucknow                      | 947 |
| 211 | Moradabad                    | 957 |
| 212 | Lalitpur                     | 934 |
| 213 | Pratapgarh                   | 959 |
| 214 | Jaunpur                      | 912 |
| 215 | Azamgarh                     | 941 |
| 216 | Unnao                        | 996 |
| 217 | Kheri                        | 902 |
| 218 | Sultanpur                    | 854 |
| 219 | Kaushambi                    | 904 |
| 220 | Sonbhadra                    | 914 |
| 221 | Deoria                       | 997 |
| 222 | Gonda                        | 926 |
| 223 | Mau                          | 913 |
| 224 | Rae Bareli                   | 979 |
| 225 | Shrawasti                    | 916 |
| 226 | Kushinagar                   | 871 |
| 227 | Basti                        | 964 |
| 228 | Sitapur                      | 986 |

|     |                            |                   |     |
|-----|----------------------------|-------------------|-----|
| 229 |                            | Mahrajganj        | 915 |
| 230 |                            | Faizabad          | 934 |
| 231 |                            | Ambedkar Nagar    | 928 |
| 232 |                            | Bara Banki        | 908 |
| 233 |                            | Bahraich          | 905 |
| 234 |                            | Siddharthnagar    | 888 |
| 235 | <b>Uttarakhand</b><br>(08) | Tehri Garhwal     | 924 |
| 236 |                            | Udham Singh Nagar | 900 |
| 237 |                            | Nainital          | 926 |
| 238 |                            | Bageshwar         | 919 |
| 239 |                            | Garhwal           | 903 |
| 240 |                            | Rudraprayag       | 901 |
| 241 |                            | Uttarkashi        | 936 |
| 242 |                            | Almora            | 903 |
| 243 | <b>West Bengal</b><br>(02) | Koch Bihar        | 897 |
| 244 |                            | Bankura           | 951 |

**Note:** The data for the marked districts (\*) will be updated when available

| <b>(iv) Base line data on SRB for Advocacy and Media Plan: (235 districts) of BBBP on SRB (HIMS, MHFW Data)</b> |                               |                            |                              |
|---|-------------------------------|----------------------------|------------------------------|
| <b>SN</b>   | <b>Name of State / UT</b>     | <b>Number of Districts</b> | <b>2016-17(APRIL -MARCH)</b> |
| 1   | <b>Andaman&amp; Nicobar</b>   | South Andaman              | 891                          |
| 2   |                               | North & Middle Andaman     | 957                          |
| 3   | <b>Andhra Pradesh (05)</b>    | Srikakulam                 | 953                          |
| 4   |                               | Vizianagaram               | 927                          |
| 5   |                               | Visakhapatnam              | 944                          |
| 6   |                               | West Godavari              | 938                          |
| 7   |                               | East Godavari              | 931                          |
| 8   | <b>Arunachal Pradesh (10)</b> | Tirap                      | 1049                         |
| 9   |                               | Lower Subansiri            | 855                          |
| 10  |                               | Lohit                      | 1032                         |
| 11  |                               | Upper Subansiri            | 910                          |
| 12  |                               | West Kameng                | 970                          |
| 13  |                               | Papum Pare                 | 953                          |
| 14  |                               | Changlang                  | 994                          |
| 15  |                               | Tawang                     | 930                          |
| 16  |                               | East Siang                 | 913                          |
| 17  |                               | Anjaw                      | 897                          |
| 18  | <b>Assam (26)</b>             | Dhemaji                    | 956                          |
| 19  |                               | Cachar                     | 748                          |
| 20  |                               | Kokrajhar                  | 986                          |
| 21  |                               | Hailakandi                 | 962                          |
| 22  |                               | Morigaon                   | 892                          |
| 23  |                               | Karbi Anglong              | 904                          |
| 24  |                               | Lakhimpur                  | 947                          |
| 25  |                               | Sivasagar*                 | N.A                          |
| 26  |                               | Tinsukia                   | 946                          |
| 27  |                               | Barpeta                    | 1176                         |
| 28  |                               | Dibrugarh                  | 1012                         |
| 29  |                               | Goalpara                   | 895                          |
| 30  |                               | Golaghat                   | 997                          |
| 31  |                               | Nagaon                     | 892                          |
| 32  |                               | Jorhat                     | 855                          |
| 33  |                               | Sonitpur                   | 912                          |

|    |                             |                    |      |
|----|-----------------------------|--------------------|------|
| 34 |                             | Baksa              | 1018 |
| 35 |                             | Dima Hasao         | 953  |
| 36 |                             | Nalbari            | 986  |
| 37 |                             | Kamrup Rural       | 975  |
| 38 |                             | Chirang            | 927  |
| 39 |                             | Dhubri             | 885  |
| 40 |                             | Darrang            | 1068 |
| 41 |                             | Bongaigaon         | 974  |
| 42 |                             | Karimganj          | 839  |
| 43 |                             | Udalguri           | 885  |
| 44 | <b>Bihar</b><br>(21)        | Jehanabad          | 950  |
| 45 |                             | Munger             | 948  |
| 46 |                             | Sheohar            | 914  |
| 47 |                             | Madhepura          | 890  |
| 48 |                             | Sitamarhi          | 900  |
| 49 |                             | Darbhanga          | 889  |
| 50 |                             | Saharsa            | 939  |
| 51 |                             | Buxar              | 866  |
| 52 |                             | Siwan              | 912  |
| 53 |                             | Arwal              | 900  |
| 54 |                             | Kaimur (Bhabua)    | 916  |
| 55 |                             | Aurangabad         | 968  |
| 56 |                             | Supaul             | 933  |
| 57 |                             | Pashchim Champaran | 932  |
| 58 |                             | Purnia             | 948  |
| 59 |                             | Gopalganj          | 942  |
| 60 |                             | Jamui              | 906  |
| 61 |                             | Araria             | 940  |
| 62 |                             | Gaya               | 968  |
| 63 |                             | Katihar            | 925  |
| 64 |                             | Kishanganj         | 932  |
| 65 | <b>Chhattisgarh</b><br>(16) | Janjgir - Champa   | 919  |
| 66 |                             | Bilaspur           | 909  |
| 67 |                             | Surguja            | 921  |
| 68 |                             | Durg               | 962  |
| 69 |                             | Korba              | 917  |
| 70 |                             | Koriya             | 894  |
| 71 |                             | Raipur             | 938  |
| 72 |                             | Mahasamund         | 951  |

|     |                                 |                          |      |
|-----|---------------------------------|--------------------------|------|
| 73  |                                 | Dhamtari                 | 911  |
| 74  |                                 | Uttar Bastar Kanker      | 920  |
| 75  |                                 | Jashpur                  | 902  |
| 76  |                                 | Kabeerdham               | 921  |
| 77  |                                 | Rajnandgaon              | 918  |
| 78  |                                 | Narayanpur               | 939  |
| 79  |                                 | Bastar                   | 929  |
| 80  |                                 | Dakshin Bastar Dantewada | 921  |
| 81  | <b>Goa</b>                      | South Goa                | 905  |
| 82  | <b>Gujarat</b><br>(04)          | Bharuch                  | 970  |
| 83  |                                 | Navsari                  | 929  |
| 84  |                                 | Tapi                     | 875  |
| 85  |                                 | The Dangs                | 939  |
| 86  | <b>Himachal Pradesh</b><br>(04) | Chamba                   | 906  |
| 87  |                                 | Kullu                    | 904  |
| 88  |                                 | Kinnaur                  | 915  |
| 89  |                                 | Lahul & Spiti            | 862  |
| 90  | <b>Jammu &amp; Kashmir</b>      | Kargil                   | 893  |
| 91  | <b>Jharkhand</b><br>(12)        | Godda                    | 909  |
| 92  |                                 | Sahibganj                | 942  |
| 93  |                                 | Garhwa                   | 908  |
| 94  |                                 | Gumla                    | 930  |
| 95  |                                 | Khunti                   | 1018 |
| 96  |                                 | Dumka                    | 968  |
| 97  |                                 | Chatra                   | 992  |
| 98  |                                 | Latehar                  | 895  |
| 99  |                                 | Simdega                  | 900  |
| 100 |                                 | Lohardaga                | 897  |
| 101 |                                 | Pakur                    | 852  |
| 102 |                                 | Pashchimi Singhbhum      | 885  |
| 103 | <b>Karnataka</b><br>(25)        | Belgaum                  | 955  |
| 104 |                                 | Mandya                   | 878  |
| 105 |                                 | Bidar                    | 900  |
| 106 |                                 | Gulbarga                 | 959  |
| 107 |                                 | Dharwad                  | 870  |
| 108 |                                 | Bangalore*               | N.A  |
| 109 |                                 | Chitradurga              | 980  |
| 110 |                                 | Davanagere               | 931  |
| 111 |                                 | Raichur                  | 892  |

|     |                               |                    |     |
|-----|-------------------------------|--------------------|-----|
| 112 |                               | Bangalore Rural    | 927 |
| 113 |                               | Yadgir             | 946 |
| 114 |                               | Chamarajanagar     | 944 |
| 115 |                               | Chikkaballapura    | 951 |
| 116 |                               | Uttara Kannada     | 911 |
| 117 |                               | Koppal             | 925 |
| 118 |                               | Udupi              | 922 |
| 119 |                               | Tumkur             | 855 |
| 120 |                               | Bellary            | 897 |
| 121 |                               | Shimoga            | 966 |
| 122 |                               | Mysore             | 884 |
| 123 |                               | Kolar              | 881 |
| 124 |                               | Ramanagara         | 989 |
| 125 |                               | Chikmagalur        | 967 |
| 126 |                               | Hassan             | 940 |
| 127 |                               | Kodagu             | 967 |
| 128 | <b>Kerala</b><br>(13)         | Alappuzha          | 975 |
| 129 |                               | Ernakulam          | 964 |
| 130 |                               | Kasaragod          | 949 |
| 131 |                               | Idukki             | 945 |
| 132 |                               | Kottayam           | 958 |
| 133 |                               | Thiruvananthapuram | 955 |
| 134 |                               | Wayanad            | 981 |
| 135 |                               | Malappuram         | 955 |
| 136 |                               | Palakkad           | 968 |
| 137 |                               | Kozhikode          | 969 |
| 138 |                               | Kannur             | 968 |
| 139 |                               | Kollam             | 946 |
| 140 |                               | Pathanamthitta     | 989 |
| 141 | <b>Madhya Pradesh</b><br>(08) | Harda              | 928 |
| 142 |                               | Shahdol            | 921 |
| 143 |                               | Chhindwara         | 957 |
| 144 |                               | Betul              | 966 |
| 145 |                               | Balaghat           | 895 |
| 146 |                               | Dindori            | 979 |
| 147 |                               | Mandla             | 944 |
| 148 |                               | Alirajpur          | 895 |
| 149 | <b>Maharashtra</b><br>(04)    | Bhandara           | 916 |
| 150 |                               | Chandrapur         | 915 |



|     |                           |                  |     |
|-----|---------------------------|------------------|-----|
| 151 |                           | Gondiya          | 962 |
| 152 |                           | Gadchiroli       | 899 |
| 153 | <b>Manipur</b>            | Imphal West      | 962 |
| 154 | <b>Meghalaya</b><br>(06)  | East Khasi Hills | 940 |
| 155 |                           | West Khasi Hills | 936 |
| 156 |                           | South Garo Hills | 920 |
| 157 |                           | Jaintia Hills*   | N.A |
| 158 |                           | West Garo Hills  | 967 |
| 159 |                           | East Garo Hills  | 927 |
| 160 | <b>Mizoram</b><br>(06)    | Lunglei          | 940 |
| 161 |                           | Lawngtlai        | 912 |
| 162 |                           | Champhai         | 973 |
| 163 |                           | Mamit            | 975 |
| 164 |                           | Aizawl*          | N.A |
| 165 |                           | Kolasib          | 898 |
| 166 | <b>Nagaland</b><br>(04)   | Zunheboto        | 940 |
| 167 |                           | Kiphire          | 906 |
| 168 |                           | Dimapur          | 943 |
| 169 |                           | Kohima           | 876 |
| 170 | <b>Odisha</b><br>(15)     | Jagatsinghapur   | 957 |
| 171 |                           | Puri             | 921 |
| 172 |                           | Subarnapur       | 965 |
| 173 |                           | Balangir         | 950 |
| 174 |                           | Bargarh          | 940 |
| 175 |                           | Mayurbhanj       | 952 |
| 176 |                           | Kandhamal        | 955 |
| 177 |                           | Rayagada         | 958 |
| 178 |                           | Kendujhar        | 987 |
| 179 |                           | Gajapati         | 920 |
| 180 |                           | Baudh            | 901 |
| 181 |                           | Koraput          | 959 |
| 182 |                           | Nuapada          | 968 |
| 183 |                           | Malkangiri       | 953 |
| 184 |                           | Nabarangapur     | 935 |
| 185 | <b>Puducherry</b><br>(03) | Karaikal         | 925 |
| 186 |                           | Puducherry       | 923 |
| 187 |                           | Mahe             | 893 |
| 188 | <b>Sikkim</b><br>(03)     | South District   | 924 |
| 189 |                           | East District    | 979 |

|     |                              |                            |     |
|-----|------------------------------|----------------------------|-----|
| 190 |                              | West District              | 927 |
| 191 | <b>Tamil Nadu</b><br>(21)    | Krishnagiri                | 968 |
| 192 |                              | Madurai                    | 945 |
| 193 |                              | Dindigul                   | 968 |
| 194 |                              | Theni                      | 914 |
| 195 |                              | Karur                      | 948 |
| 196 |                              | Vellore                    | 976 |
| 197 |                              | Tiruppur                   | 969 |
| 198 |                              | Erode                      | 966 |
| 199 |                              | Virudhunagar               | 938 |
| 200 |                              | Coimbatore                 | 939 |
| 201 |                              | Thanjavur                  | 979 |
| 202 |                              | Thiruvarur                 | 929 |
| 203 |                              | Nagapattinam               | 964 |
| 204 |                              | Kancheepuram               | 947 |
| 205 |                              | Sivaganga                  | 951 |
| 206 |                              | Pudukkottai                | 956 |
| 207 |                              | Tirunelveli                | 960 |
| 208 |                              | Ramanathapuram             | 928 |
| 209 |                              | Thoothukkudi               | 938 |
| 210 |                              | Kanniyakumari              | 944 |
| 211 |                              | The Nilgiris               | 938 |
| 212 | <b>Telangana</b>             | Medak                      | 950 |
| 213 | (02)                         | Khammam                    | 958 |
| 214 | <b>Tripura</b><br>(03)       | West Tripura               | 955 |
| 215 |                              | Dhalai                     | 949 |
| 216 |                              | North Tripura              | 955 |
| 217 | <b>Uttar Pradesh</b><br>(03) | Rampur                     | 956 |
| 218 |                              | Sant Kabir Nagar           | 886 |
| 219 |                              | Balrampur                  | 940 |
| 220 | <b>West Bengal</b><br>(16)   | Purba Medinipur            | 916 |
| 221 |                              | Maldah                     | 929 |
| 222 |                              | Bardhaman                  | 884 |
| 223 |                              | Hugli                      | 916 |
| 224 |                              | Uttar Dinajpur             | 943 |
| 225 |                              | Puruliya                   | 866 |
| 226 |                              | Darjiling                  | 901 |
| 227 |                              | Jalpaiguri                 | 909 |
|     |                              | North Twenty Four Parganas | 871 |
| 228 |                              |                            |     |

|     |                            |     |
|-----|----------------------------|-----|
| 229 | Dakshin Dinajpur           | 957 |
| 230 | Birbhum                    | 921 |
| 231 | Nadia                      | 929 |
| 232 | Haora                      | 914 |
| 233 | South Twenty Four Parganas | 876 |
| 234 | Paschim Medinipur          | 909 |
| 235 | Murshidabad                | 912 |

**Note:** The data for the marked districts (\*) will be updated when available

**Template for District Level Action Plan under BBBP**

| Activity   | Frequency              | 2017-18 |    |    |    | Outputs/Outcomes   | Responsibility/<br>Support required   |
|--|------------------------|---------|----|----|----|--|---|
|  |                        | Q1      | Q2 | Q3 | Q4 |  |   |
| <b>District level activities</b>   |                        |         |    |    |    |  |   |
| <b><i>A. Department of Women and Child/Social welfare</i></b>  |                        |         |    |    |    |  |   |
| <b>1. Orientation &amp; Sensitization</b>  |                        |         |    |    |    |  |   |
| Conduct Orientation programmes of:<br><br>-District Officers/Zila Parishad members/ PNDT Cell/Judiciary/ District Legal Services Authority (DLSA).<br><br>- Block Officers/ Block Parishad/ Panchayat members<br><br>- Village Health Sanitation & Nutrition Committee (VHSNC) members<br><br>-School Management Committee | Once for each category | √       |    |    |    | -No. of programmes held<br><br>-No. of participants attended orientation programme | DC with support of DPO/Coordinating officer<br><br><br><br><br><br><br>Nodal Officers, (WCD) with the support of BDO (Rural Development Deptt.), Health |

|   |                      |   |   |   |   |  |  |
|---|----------------------|---|---|---|---|--|--|
| (SMCs) members  |                      |   |   |   |   |  | Nodal Officers, (WCD, Education)                                       |
| Conduct sensitization exercise of<br>-Religious leaders<br>-Elected representatives<br>-Community leaders | Twice in a year      | √ | √ | √ | √ | No. of Religious leaders/<br>Community leaders/Elected<br>representatives sensitized | DM/DC with support of<br>DPO/ Coordinating<br>officer                  |
| <b>2. Inter-sectoral consultation &amp; Meetings</b>  |                      |   |   |   |   |  |  |
| Inter-sectoral Meetings<br>District Task Force (DTF), Block<br>Task Force (BTF)                           | Once in a<br>quarter | √ |   |   |   | No. of meetings held<br>DTF, BTF   |  |
| Conduct stakeholder meetings  | Ongoing              | √ | √ | √ | √ | - Follow up actions undertaken   | DM/DC with support of<br>DPO/ Coordinating<br>officer                  |
| <b>3. Training &amp; Capacity Building</b>  |                      |   |   |   |   |  |  |
| Mainstream gender equality related<br>concerns in:<br>- Training Curriculums                              | Once                 |   |   |   |   | Gender & CSR issue<br>integrated in:<br><br>No. of Training Institutions:            | DC with directions<br>issued to concerned<br>departments/ institutions |

|   |             |   |   |   |   |  |  |
|---|-------------|---|---|---|---|--|--|
| - Administrative, police, judicial, medical colleges and other training academies-LBSNAA, ATIs<br>- Gender & Girl Child Units<br>- ICDS, NHM, SSA, NRLM, MGNREGA, TSC |             |   |   |   |   | No. of Training curriculums:<br>No. of Gender & Girl Child Units:<br>No. of schemes/ programmes:                       |  |
| Undertake training of Frontline workers-AWWs/ ASHAs   | Quarterly   | √   | √ | √ | √ | -No of frontline workers participated<br>-Action taken   | Nodal Officers, (WCD, Health) with Training experts    |
| Training of Youth/Sabla groupss/<br>Volunteer/SHG/Mahila Mandals/NYKS to act as volunteers  | Quarterly   | √   | √ | √ | √ | -No of Youth/Sabla groupss/Volunteer/SHG/Mahila Mandals/NYKS trained<br>-No. of volunteers identified<br>-Action taken | Nodal Officers, (WCD, Health) with Training experts    |
| Train Distt. Appropriate Authority (DAA), & other functionaries on PCPNDT act   | Bi-annually | √   | √ | √ | √ | -No. of Trainings organized<br>-Actions undertaken   | Nodal Officers, (WCD, Health) with Training experts    |
| Provide legal counselling/ aid/ awareness on PC & PNDT Act and other legislations using District/ Taluka structures under District Legal Services Authority (DLSA)    |             | √   | √ |   |   | - Number of legal counselling/aid/ awareness sessions conducted  | National Legal Services Authority (through SLSA, DLSA) |
| <b>4. Advocacy, Community Mobilization &amp; Awareness generation</b>   |             |   |   |   |   |  |  |
| Insert Email Signatures with BBBP Logo  | Ongoing     | For all Levels of officials registered at NIC/Gov Domains |   |   |   | - Establish brand identity of the initiative<br>- It will work as a reminder for renewed commitment                    | DC supported by NIC                                    |

|  |           |   |  |  |
|--|-----------|---|--|--|
|  |           |   | every time the logo is seen in an email  |  |
| Organize Celebration of birth of Girl Child                          | Quarterly | Block/ Panchayat level  | <ul style="list-style-type: none"> <li>- Positive reinforcement of the value of girl child</li> <li>- Drive home the message of need for mindset change</li> </ul>   | Sarpanch/SDM   |
| Celebrate National Girl Child Day on 24 <sup>th</sup> January        | Annual    | In a Year   | <ul style="list-style-type: none"> <li>- Culmination of advocacy/ IEC activities and highlight the plight of the girls in the country.</li> <li>- Create awareness about welfare and empowerment of girl child.</li> </ul>   | District Administration in collaboration with other line Departments |
| Celebrate International Women's Day on 8 <sup>th</sup> March         | Annual    | In a Year   | <ul style="list-style-type: none"> <li>- The need for establishing gender equality shall be highlighted</li> <li>- Awareness generation about welfare and empowerment of women and girls</li> <li>- The importance of women's growth and empowerment for the growth and development of the nation</li> </ul> | District Administration in collaboration with other line Departments |
| Take Pledge/ Oath to empower the girl child and enable her education | Annual    | Any annual event may be selected from the calendar of events for the same by the District Administration and may be taken at all levels | <ul style="list-style-type: none"> <li>- A sense of ownership in all Govt functionaries and other stakeholders shall be instilled</li> <li>Create a sense of commitment to becoming change makers within one's family, community &amp; social circle</li> </ul>  | Grass roots functionaries like AWWs/ASHAs, PRI, BDO, SDMs, DC etc.   |

|   |                      |                       |   |  |
|---|----------------------|-----------------------|---|--|
| Initiate Social Media Presence & encourage its effective use in the community for mindset change through YouTube, Facebook, Twitter, MyGov etc. | On-going             | On a regular interval | <ul style="list-style-type: none"> <li>- Effective engagement with youth who are future parents</li> <li>- Opening of channels of communication with cross sections of people</li> </ul>  | Any concerned stakeholder/CSO/<br>NGO Partner                        |
| Organize <i>Naari ki Chaupal/Mann ki Baat</i> across the District*  | Monthly              | On a regular interval | <ul style="list-style-type: none"> <li>- Women's issues brought to the forefront through discussion, debate &amp; interactions</li> <li>- Enabling environment created for engaging with the community on issues related to women</li> <li>- Awareness generation about schemes and services of Governments and other local bodies or resource centers</li> <li>- women's collectives bargaining for rights and strengthened community involvement</li> </ul> | Head of the Body organizing it                                       |
| Display & Disseminate IEC materials like BBBP handbook, Badges, Posters, audio video content available at the BBBP YouTube Channel              | On-going             | On a regular interval | <ul style="list-style-type: none"> <li>- Supplement media and communication efforts.</li> <li>- Drive home the intended social messages through audio video content which attract and engage all</li> </ul>   | District Administration in collaboration with other line Departments |
| Support National Campaign related activities like Mobile Video Exhibition Vans and Field Publicity activities                                   | As and when required | As and when needed    | <ul style="list-style-type: none"> <li>- Awareness generation &amp; mind set change</li> </ul>  | District Administration in collaboration with other line Departments |



|   |                            |  |   |  |
|---|----------------------------|--|---|--|
| Identify local BBBP Champions & engage them appropriately at various platforms**  | On-going                   | On a regular interval  | <ul style="list-style-type: none"> <li>- Set positive examples and spread the message</li> <li>- Awareness generation &amp; mind set change</li> </ul>  | Community, Local Media, Social Media, District Administration, Line Departments            |
| Highlight Exemplary case studies of girls coming up despite odds, stories of families which have promoted daughters   | On-going                   | On a regular interval  | <ul style="list-style-type: none"> <li>- Will ensure local media coverage</li> <li>- Such stories will set positive examples, leading to mind set change</li> </ul>   | Community, Local Media, Social Media, District Administration, Line Departments            |
| Encouraging reversal of son centric rituals and customs   | As frequently as possible  | May be decided. Further, BBBP Guideline may be referred to for details on how these are to be done and staggered in a timeline | <ul style="list-style-type: none"> <li>- Will bring about social changes which are liberal and progressive for girls and women</li> </ul>   | Community leaders/PRI's Grass roots functionaries like AWWs/ASHAs, PRI, BDO, SDMs, DC etc. |
| Annual Mega Event- Felicitation of best Panchayat/Frontline worker  | Annual<br>(District level) |  | -Panchayats/Frontline workers recognized for their exemplary work   | DC, District Administration  |
| Encourage meritorious girls in the field of academics/sports/culture and social work etc.<br><br>Felicitate/ incentivise with token appreciation on National Girl Child Day/International Women's Day/Independence Day/Republic Day | Annual<br>(District level) |  | <ul style="list-style-type: none"> <li>- Motivate and empower girls for higher education</li> <li>- Motivate talented girls to get into sports</li> <li>- Prevention /Delaying of child marriage</li> </ul> | District Administration in collaboration with other line Departments                       |

|  |   |  |  |  |                            |   |   |
|--|---|--|--|--|----------------------------|---|---|
| etc.   |   |  |  |  |                            |   |   |
| Identify & Nominate individuals/ CSOs/NGOs for <i>Zila&amp;Rajya Puraskar</i>  | Annual<br>(national level)                              |  |  |  |                            |   | DC, District Administration   |
| Any other IEC innovation at local level***   | May be decided  |  |  |  |                            |   | DC, District Administration   |
| <b>5. Operationalize MIS</b>   | Annual  | Recurrent reporting<br>(Monthly-at District; Quarterly: at State/National) |  |  | Online MIS operationalized | Coordinating officer, Nodal Officers  |   |
| <b><i>B. Health &amp; Family Welfare</i></b>   |   |  |  |  |                            |   |   |
| Standardise the data collection/ Reporting/ Monitoring tools from the existing data and analytical reports available at the district level in order to get real time data on sex ratio at birth. | One time  | √  |  |  |                            | Develop MIS to collect data from various departments on indicators that will help in tracking progress of CSR in the district | DC along with Nodal Officer and all other allied departments including Health, WCD and Education  |
| Standardise the data collection/ Reporting/ Monitoring tools from the existing data and analytical reports available at the district level in order to get real time data on sex ratio at birth. | Quarterly at district level and<br><br>Six - monthly at | √  |  |  | √                          | For evaluating the impact of BBBP interventions with regard to improvement in Child Sex Ratio.                                | DC along with Nodal Officer and all other allied departments including Health, WCD and Education at the District level<br><br>Health, WCD and |

|  |  |   |  |  |  |  |   |
|--|--|---|--|--|--|--|---|
|  | State level  |   |  |  |  |  | Education department along with DCs and concerned district officers at district level |
| Strengthen District PC&PNDT Cell (technical human resource, office space in DM's office with equipment )   | One time   | √ |  |  |  | PC & PNDT cell strengthened<br>-Standard Operating Procedure for members<br>-Training manual, panel of experts, resource persons identified for training   | Nodal Officer, PNDT Cell  |
| Constitution/ reconstitution and functioning of State Advisory Committees as prescribed in the PC&PNDT Act   | As per the provisions of the PC&PNDT Act             | √ |  |  |  | Statutory requirement under PC&PNDT Act completed.   | Health Dept., PNDT cell   |
| Monitoring of implementation of PC&PNDT Act in terms of functioning of Advisory committee (meetings)/ registration/renewals/ cancellation/ suspensions/ sealing/ complaints received/ qualification of service providers as per the Act/ court cases/ district level/record maintenance and submission by the clinics advocacy initiatives | Monthly at District<br><br>Quarterly at state level. |   |  |  |  | - Registrations of all pre conception and prenatal diagnostic centres including ART/IVF, ultrasound/ imaging centre, Sperm Banks etc<br>- Review Of PC& PNDT Act Implementation and Submission Of Monthly Reports to State.<br>- Compilation at state level and Submission of QPRs to the Centre | DC along with CMO and PNDT cell   |

|  |                     |   |   |   |   |   |                                     |
|--|---------------------|---|---|---|---|---|-------------------------------------|
|  |                     |   |   |   |   |   | State<br>Appropriate<br>Authorities |
| Mapping of ultra-sonography machines; monitoring of compulsory registration of ultra sound machines            | Quarterly           | √ | √ | √ | √ | <ul style="list-style-type: none"> <li>- Identify unregistered Ultrasound machines in the district</li> <li>- 100 % registration of all machines in the district</li> <li>- Cases filed against the individuals operating unregistered machines.</li> </ul>   | DAA and PNDDT Cell                  |
| Update the state web portal for all information on implementations status, online form F option and compliant. | Monthly             | √ | √ | √ | √ | Monitoring  | DAA and PNDDT Cell                  |
| Active web portal for submission of online form 'F' with necessary analytical reports.                         | Quarterly           | √ |   |   |   | <ul style="list-style-type: none"> <li>- Ensure compliance of maintenance of records by registered clinics</li> <li>- Ensure submission of records by 5<sup>th</sup> of every month by the registered clinics</li> <li>- Examination of online submitted form Fs and generated necessary reports</li> </ul> | DAA and PNDDT Cell                  |
| Activate web portal for online complaints  | Activation one time |   |   |   |   | <ul style="list-style-type: none"> <li>- Generate intelligence against the violators of law in the district</li> <li>- Action against the violators</li> </ul>  | DAA and PNDDT Cell                  |

|   |   |   |   |   |   |  |   |
|---|---|---|---|---|---|--|---|
|   | Redressal and follow-up recurring                               |   |   |   |   | of Law   |   |
| Review all pending cases before district court  | Every month   | √ | √ | √ | √ | - Followed up court cases<br>- Ensure early disposal<br>- Convictions against the violations under P&PNDT Act  | DAA with District Legal person- PNDT cell |
| Formation of District Inspection and Monitoring Committees (DIMC)                       | One time with periodic modifications<br><br>Inspections Monthly |   |   |   |   | - Monitoring of implementation on ground<br>- No of inspections conducted<br>- Follow-up action in terms of sealing, show cause notices and cases filed ,suspension/ cancellation of registrations | DAA along with DIMC                       |
| Analyze birth records- IVF centres, Surrogacy clinics, and genetics counselling centres | Quarterly   | √ | √ | √ | √ | % age of birth of girls & boys analyzed<br><br>Analysis Report to SAA  | Dist. Appropriate Authority (DAA)         |
| Institute Rewards for informers   | Regular   | √ | √ | √ | √ | -No. of unregistered/illegal ultrasound machines/clinics identified through informers<br><br>-No. of rewards given   | PNDT Cell, Health Dept. & DTF             |

| <b>C. Department of Education</b>   |                   |   |   |   |   |   |   |
|---|-------------------|---|---|---|---|---|---|
| Activate SMCs to<br><br>-Conduct special drives to promote universal enrolment of girls; -Link out of school with back to school or alternative education options | Annual            | √ | √ |   | √ | % age increase in enrolment                                 | Dist. Education Officer   |
| Operationalize standard guidelines/ protocols for Girl Child Friendly Schools   | Once              | √ |   |   |   | Standard Guidelines/Protocols adopted in all schools        | Education Deptt./Dist. Education Officer                                      |
| Ensure toilet facility for girls in elementary and secondary school   | Once & maintained | √ |   |   |   | No. of toilets constructed in elementary & secondary school | Dist. Education Officer   |
| Operationalize Kasturba Gandhi Balika Vidyalaya (KGBV)  | maintained        | √ |   |   |   | No. of KGBVs constructed                                    | Dist. Education Officer   |
| Operationalize girls hostel for secondary and senior secondary  | maintained        | √ |   |   |   | No. of girls hostel operationalized                         | Dist. Education Officer   |
| Initiate Campaign to re-enroll drop-out girls in secondary schools through massive joint village contact drive  | Annual            | √ | √ | √ | √ | No. of Campaigns undertaken<br><br>No. of girls re-enrolled | Dist. Education Officer /AWWs, ASHAs, PRIs, and community/ women/youth groups |
| Create Balika Manch   | Regular           | √ | √ | √ | √ | Increased participation of girls                            | Dist. Education Officer   |

|   |        |  |   |  |   |  |                     |
|---|--------|--|---|--|---|--|---------------------|
| Institute district level award for promoting girl's education | Annual |  | √ |  | √ |  | Education Dept., DC |
|---|--------|--|---|--|---|--|---------------------|

|   |           |   |   |   |   |  |   |
|---|-----------|---|---|---|---|--|---|
| <b>Community Mobilization &amp; Awareness generation</b>                        |           |   |   |   |   |  |   |
| <b>Women &amp; Child Development/Social Welfare</b>                             |           |   |   |   |   |  |   |
| Organise Village health and nutrition day (VHND)                                | Monthly   | √ | √ | √ | √ | - No. of VHND organized<br>- No. of persons sensitized on gender & CSR issue   | Nodal Officers, (WCD, Health)               |
| Effective implementation of Mother Child Protection Card (MCPC)                 | Monthly   | √ | √ | √ | √ | - No. of MCP card distributed<br>- No. of MCP card properly filled up & maintained   | Nodal Officers, (WCD, Health)               |
| Incentivize pregnant mothers for registration of pregnancy in the 1st trimester | Quarterly | √ | √ | √ | √ | - No. of pregnant mother registered in the first trimester<br>- No. of pregnant mother received cash incentive of RS. 3500/- | Nodal Officers, (WCD, Health)               |
| Nukkad Natak/Wall Writing/Rally/Prabhat Pheri/Baby show                         | Quarterly | √ | √ | √ | √ | - No. of event/activity organised;<br>• Nukkad Natak<br>• Baby show<br>• Rally/Prabhat Pheri<br>• Wall writing               | Nodal Officers, (WCD, Health and Education) |
| <b>Health &amp; Family Welfare</b>  |           |   |   |   |   |  |   |
| Collect primary data on CSR indicators from concerned departments               | Annual    | √ |   |   |   |  | Nodal Officers, (Health, WCD)               |

|  |           |   |   |   |   |  |   |
|--|-----------|---|---|---|---|--|---|
| (baseline & end line)  |           |   |   |   |   |  |   |
| Promote early registration of Pregnancy in first trimester               | Monthly   | √ | √ | √ | √ | - No. of pregnancy registered in the 1 <sup>st</sup> trimester<br>- No. of pregnant women immunized (TT-1 & TT-2)<br>- No. of Pregnant women have done ANC<br>- No. of pregnant women received IFA | Nodal Officers, (Health, WCD)                           |
| Promote birth registration through campaigning, counselling, home visits |           |   |   |   |   | - Birth registration increased   |   |
| Monthly meeting of VHSNC   | Monthly   | √ | √ | √ | √ | - No. of VHSNC meeting held<br>- Action taken  | Nodal Officers, (Health, WCD)                           |
| <b><i>Department of Education</i></b>                                    |           |   |   |   |   |  |   |
| Create Balika Manches to encourage participation of girls                | Quarterly | √ | √ | √ | √ | - No. of Balika Manch formed<br>- Action taken   | Nodal Officer, (Education)                              |
| Activate School Management Committees (SMCs)                             | Regular   | √ | √ | √ | √ | - No. of SMCs operationalize<br>- Action taken   | Nodal Officer, (Education)                              |
| Campaign to re-enroll drop-out girls in primary/secondary schools        | Annually  | √ |   |   |   | - No. of Campaigns undertaken<br>- No. of girls re-enrolled  | Nodal Officer, (Education) with the support of Teachers |



| <b>Department of Panchayati Raj</b>   |                              |   |   |   |   |  |  |
|---|------------------------------|---|---|---|---|--|--|
| Facilitate Mahila Sabhas  | Quarterly                    | √ | √ | √ | √ | - No. of Mahila Sabha formed<br>- Action taken   | Nodal Officer, (WCD, Health) with the support of BDO                         |
| Facilitate special Gram Sabhas/Urban Ward Sabha   | Quarterly                    | √ | √ | √ | √ | - No. of special Gram Sabha organised<br>- Action taken  | Nodal Officer, (WCD, Health) with the support of BDO                         |
| Identification of community watch groups (women panchayat members, youth volunteers) through Gram Sabha   | Once (During the Gram Sabha) | √ | √ | √ | √ |  |  |
| Ensure 100% birth registration<br><br>Mandatory exhibition of Gender disaggregated data through Guddi-Gudda Boards **** (Girl Child-Boy Child boards) in prominent places like Panchayat offices/tehsils/hospitals & widely publicized in the community | Monthly                      | √ | √ | √ | √ | - Locations where Boards are put up:<br>- No. of Girl child born vis-a-vis boys properly displayed<br>- No. of birth registered<br>- No. of Birth Certificates given | Nodal Officer, (WCD, Health) with the support of CMO,BDO, Sarpanch/ Pradhans |

#### **\*Nari ki Chaupal**

*Nari ki Chaupal* aims to create a vibrant meeting space that enables a large number of community groups, civil society organizations and women from different cross sections to come together, reflect and have a dialogue on issues that affect them, with an approach towards finding solutions. Women and men can sit together to share their stories, experiences and learning and in turn, become aware of various government schemes and programmes targeted at achieving women's empowerment. Various key messages on a range of thematic issues can be disseminated through interesting, pre designed and structured activities.

**\*\*Indicative List of BBBP Champions who can promote the cause of gender equality and education for girls**

- Local MLA/MPs
- Local Prominent personalities like Principal, journalist, lawyer, teachers, social worker, sports personality etc.
- DC, SP, Corporate leaders hailing from that locality

**\*\*\* Indicative List of activities related to Advocacy, Community Mobilization & Awareness Generation**

- Prevention of Child Marriage on *Akshaya Tritiya* organized on a massive scale in North India
- Reinforcement of importance of girl child on regional festivals, ceremonies etc.
- Rallies, Prabhat Pheri for promoting gender equality
- Conversion of religious and son-centric rituals into gender neutral rituals eg celebration of *Raksha Bandhan/Sibling Day* in an all-daughter/ all son family, females performing the last rites, widows being present on auspicious occasions etc.
- Any other activity to fight regressive social customs or patriarchal superiority
- Fight other regional variations of patriarchal dominance like diktats

\*\*\*\* *Guddi-Gudda* Boards providing the details of number of boys and girls born in a month

**Action points for Gram Panchayats on CSR**

- i. Special Gram Sabha meeting to discuss (a) birth rate of boys and girls over the last few years, (b) the impact of having a larger number of men than women, (c) the illegality sex determination of foetus and female foeticide and (d) increase the value of girl child through advocacy.
- ii. Mahila Sabha should be constituted immediately either through executive instructions or through statutory rules. They should hold regular meetings and review actions listed here. The Panchayat will convene Mahila Sabha meetings consisting of all women voters and explain to them the actions which are being taken.
- iii. One of the issues which must be discussed in Mahila Sabha is the impact of having lower number of women on public order and well being of adults.
- iv. Sex determination is possible only after three months of pregnancy. Pregnant women who register themselves at Anganwadi Centres / ANM after three months are likely to have gone for sex determination of foetus.
- v. As per the decision of the Government of India, a Ward Member preferably a female Ward Member will be the Chairperson of the Anganwadi Centre Monitoring Committee. A copy of the circular is attached. She should closely monitor the registration of pregnant mothers, birth, immunization and other activities. She should report the findings at Gram Panchayat meetings.
- vi. In the Gram Sabha meeting, women who are committed to the cause of girl children will be selected as volunteers to work for this cause. The Panchayat could be divided among the volunteers. One activity is to see that every pregnant mother shall be asked to report to the Anganwadi Centre after the first month. They will also keep a watch on such mothers to see that the touts / agents do not come and she does not go for sex determination test. If she does so, the volunteers will accompany her to the clinic and ensure that nothing illegal happens.
- vii. Volunteers / Ward Members will report to the police about agents who come from outside for facilitating women in sex-determination test and female foeticide and their names should be announced in the Gram Sabha and Mahila Sabha.
- viii. The Anganwadi Centres / Ward Members will report to the Gram Panchayat every month about the pregnant mothers, children and immunization.
- ix. The Anganwadi Worker who also belongs to the same village will take the initiative for registration of all cases of pregnancy during the first month.
- x. The villagers including Panchayat Members and Sarpanch must keep a watch on the clinics engaged in this activity and if any case is detected the matter should be brought to the notice of police and District Magistrate.

**Parameters for felicitation of Schools/ girls for promoting girl's education**

Under “*Beti Bachao, Beti Padhao*” Abhiyan, Rs. 5 lakh per district, may be used for promoting girl's education. To enable the district for optimum impact under BBBP, the **following parameters are proposed:-**

- i. Sanction of additional school grant amounting to Rs. 10,000/- to each primary school achieving the target of 100% transition of girl students from class V to VI.
- ii. Sanction of additional school grant amounting to Rs. 15,000/- to each upper primary school achieving the target of 100% transition of girl students from class VIII to IX.
- iii. Sanction of additional school grant amounting to Rs. 20,000/- to each secondary school achieving the target of 100% transition of girl students from class X to XI.
- iv. Felicitation at district level function with certificate and cash prize of Rs. 5,000/- to each of the top ten girl students in the district passing the class Xth state board exam.
- v. Felicitation at district level function with certificate and cash prize of Rs. 5,000/- to each of the top ten girl students in the district passing the class XIIth state board exam.
- vi. Felicitation at district level with a prize of Rs. 20,000/- to the girl topper of class XII state board exam in the district who enrolls for higher education
- vii. The selection of the schools/students will be done on the basis of UDISE data and Board results.

**Note: The proposals under Sectoral Interventions of MHRD will be put up before the DTF and however the decision of DTF will be final. The Ceiling of Rs 5 Lakh has to be kept in mind by the district.**



### Guddi-Gudda Board

District:

Gram Panchayat:

Village:

Month/Year-

| Number of children born | Cumulative<br>(from Jan-up till previous month) | Current month |
|-------------------------|---|---------------|
| <b>Guddi (Girl)</b>     |   |               |
| <b>Gudda(Boy)</b>       |   |               |

**Illustrative list of Innovative initiatives under Beti Bachao Beti Padhao**

Under the BBBP Scheme, several innovative initiatives have been undertaken by the districts in collaboration with partner Departments to build visibility to the issue, sensitize and create awareness, initiate discussion, build national consciousness amongst various target groups and stakeholders on improving the child sex ratio and related issues or empowerment of women. Some of the innovative initiatives are listed below to encourage districts to emulate and adopt as per their local need, context and sensibilities.

| <b>Sl.no.</b> | <b>Innovative activities</b>   | <b>Remark</b>  |
|---------------|--|--|
| <b>1</b>      | <b>Digital Guddi-Gudda Board</b>   | The display of digital board is a fine example of digital innovation and best practice connected with the BBBP Scheme, impacting thousands of people in the District. The <i>Guddi-Gudda Board</i> is used to exhibit disaggregated data on birth of girls and boys under BBBP. It also contains information on schemes/programmes for girl child, Audio-Video content and IEC material on issue of declining CSR. |
| <b>2</b>      | <b>Udaan- Sapneya Di Duniya De Rubaru (Udaan- Live your Dream For One Day)</b> | The initiative is meant for girls of Classes VI- XII to provide them with an opportunity to spend a day with a professional they aspire to be — be it a doctor, police official, engineer, IAS and PPS officers, among others  |
| <b>3</b>      | <b>My Aim My Target Campaign</b>   | Administration select the academically bright girls from Arts, Commerce, Medical and Non-medical streams and given an opportunity to interact with various district level officers including DC, Addl. DC, Judicial Magistrate, SDM, BDPO, Doctors, Police Officers and other Senior Officers from different streams.  |
| <b>4</b>      | <b>Lakshya Se Rubru</b>  | Selected Girl's students of school/colleges are given opportunity to visit and interact with senior Govt. offices of various departments to make them aware of responsibility & functioning process. Initiative is to encourage girls to take up informed decisions in choosing a career for themselves.   |
| <b>5</b>      | <b>Pahal -Ek Kadam Nari Samman ki Aur"</b>                                     | An initiative which is organized with multiple activities includes launch of dedicated caller tune, signature campaign, oath taking and cultural bonanza on empowerment of girl child.   |
| <b>6</b>      | <b>Ghar Ki Pehchan Beti Ke Naam</b>  | Initiative started in 20 villages with low CSR, under this the house is known by girl child (name plate of girl child outside houses).   |
| <b>7</b>      | <b>Noor Jeevan Ka Betiyan"campaign</b>   | A journey towards bringing positive change in the society towards girls. A week long campaign celebrated with  |

|           |  |  |
|-----------|--|--|
|           |  | various theme based interactive activities (day wise) organized in Panchayats, schools, colleges, institutions level.  |
| <b>8</b>  | <b>Kanya Sambardhana Utsav</b>   | The initiatives under in which District Administration felicitate the girl children (Kanya) & mother with a view to create awareness about the value of girl child.  |
| <b>9</b>  | <b>Bitiya and Birba</b>  | The unique initiative aims to generate awareness about BBBP as well as Environment Protection. Under this mothers of newly born girl child facilitated and honored by giving 'Plant'.  |
| <b>10</b> | <b>Aao School Chalein campaign</b>   | An enrollment campaign with the multi-sectoral approach through door to door visit and mobilize parents to ensure 100% enrolment of girls in schools.  |
| <b>11</b> | <b>Apna Bacha Apna Vidyalay</b>  | Special campaign in convergence with Department of Education, Department of Information & Broadcast and stakeholder to ensure 100% enrolment of girls in schools of the district.  |
| <b>12</b> | <b>Lunch with Laadli</b>   | An initiative of District Administration, where District Collector visits Government schools to see the quality of mid day meal and interact with the girls over lunch & motivate/ inspire them to pursue their studies.         |
| <b>13</b> | <b>Collector Ki Class</b>  | A unique initiative by district administration to provide free coaching classes for poor girls of Government schools/colleges. Professional teachers/professors are taking the session and provide support in career counseling. |
| <b>14</b> | <b>Bal Cabinet</b>   | Bal Cabinets are run by the students at school level in the district. Where students play a role as Prime Minister, Home Minister, Education Minister and Finance Minister etc. to discuss and resolve various issues.           |
| <b>15</b> | <b>Introduce Pink cards - for the parents having daughters (maximum of two) from 20 villages (having low child sex ratio).</b> | A special Pink Cabin is set up in Suvidha Kendra (Facilitation Centre) by the District Administration, where Pink Card holders can avail benefit of Birth Registration, Marriage Registration, Driving License etc               |

**Preliminary Information on the implementation of BBBP Scheme  
at District level**

**State****District****Reporting Month****Name of the reporting authority:****Name & designation of the Nodal Officer:****1. Has District Task Force been constituted as per the guidelines? Yes/No**

|   |  |
|---|--|
| i.) If Yes, details about constitution of DTF be provided (headed by, members inducted, copy of notification issued if any) |  |
| ii.) If No, specify the reasons   |  |

**2. Nomination of Nodal Officer from the key departments by DTF Yes/No**

If Yes, details may be provided thereof

| Sl.No. | Name of the officer | Designation | Name of the Department | Contact Number & Email |
|--------|---------------------|-------------|------------------------|------------------------|
| i.)    |                     |             |                        |                        |
| ii.)   |                     |             |                        |                        |
| iii.)  |                     |             |                        |                        |

**3. Whether Coordinating officer has been designated for collecting and compiling progress report from the line departments: Yes/No**

| Name of the officer | Designation | Name of the Department | Contact Number & Email |
|---------------------|-------------|------------------------|------------------------|
|                     |             |                        |                        |

**4. Has Block Task Force been constituted as per the guidelines? Yes/No**



|  |  |
|--|--|
| i.) If Yes, details about constitution of BTF be provided (headed by, members) |  |
| ii.) If No, specify the reasons  |  |

**5. Whether District Action Plan has been submitted to State WCD/Social Welfare Deptt. ?**  
Yes/No

**6. Kindly indicate major activities that you plan to undertake in your district in the next 3 months.**

| S.No. | Activities | Details of the activity | Remarks, if any |
|-------|------------|-------------------------|-----------------|
| 1.    |            |                         |                 |
| 2.    |            |                         |                 |
| 3.    |            |                         |                 |
| 4.    |            |                         |                 |
| 5.    |            |                         |                 |

**7. Whether Guddi-Gudda Boards (Girl-Boy Board) have been put up at Panchayat Bhawan?**  
Yes/No

|   |  |
|---|--|
| i.) If Yes, how many panchayats out of total gram panchayats covered so far |  |
| ii.) If No, specify the action plan with timelines                          |  |

**8. Kindly provide information on Awareness Generation/IEC activities undertaken in the district through the Mobile Exhibition Vans**

| S.No. | No. of people sensitized | No. of IEC material distributed (brochures, leaflets, handouts, posters) | Remarks/Feedback, if any |
|-------|--------------------------|--|--------------------------|
| 1.    |                          |  |                          |

**Quarterly Progress Report of BBBP programme-District Level****Part-A****1. Reporting Month/Year:****2. Name of District:****Ministry of Women and Child Development:**

1. District Task Force meeting held under the chairmanship of District Collector/Commissioner

**Yes/No**

2. Block task force meeting held under the chairmanship of Sub District Magistrate/Block Development Officer (BDO)

**Yes/No****3. Orientation & sensitization programme for stakeholders:**

a) Compilation of orientation &amp; sensitization programme at Block level;

i. No. of training organised \_\_\_\_\_

ii. Details of the stakeholders:

| <b>Sl. No.</b> | <b>Stakeholders</b>                 | <b>No. of participants</b> |
|----------------|-------------------------------------|----------------------------|
| 1.             | Aanganwadi worker                   |                            |
| 2.             | ANM                                 |                            |
| 3.             | ASHA worker                         |                            |
| 4.             | Block Parishad members              |                            |
| 5.             | Block Officers                      |                            |
| 6.             | Community volunteers                |                            |
| 7.             | Elected representatives             |                            |
| 8.             | Mahila Mandal members               |                            |
| 9.             | Nehru Yuva Kendra (NYK)             |                            |
| 10.            | NGOs/CBOs                           |                            |
| 11.            | PRI members (Sarpanch/Pradhan)      |                            |
| 12.            | Religious leaders/Community leaders |                            |

|     |   |  |
|-----|---|--|
| 13. | School teachers   |  |
| 14. | Supervisor, ICDS  |  |
| 15. | Self Help Group (SHG)   |  |
| 16. | Village Convergence & Facilitation Service                        |  |
| 17. | Village Health Sanitation and Nutrition Committee (VHSNC) members |  |
| 18. | Youth Group   |  |

b). Orientation & sensitization programme at District level;

i. No. of training organised \_\_\_\_\_

ii. Details of the stakeholders:

| Sl. No. | Stakeholders                           | No. of participants |
|---------|--|---------------------|
| 1.      | District Officers                      |                     |
| 2.      | District Appropriate Authorities       |                     |
| 3.      | Doctors (IMA & FOGSI)                  |                     |
| 4.      | Elected representatives                |                     |
| 5.      | Judiciary                              |                     |
| 6.      | Legal experts                          |                     |
| 7.      | National Cadet Corps (NCC)             |                     |
| 8.      | National Service Scheme (NSS)          |                     |
| 9.      | Nehru Yuva Kendra (NYK)                |                     |
| 10.     | NGOs/CBOs                              |                     |
| 11.     | Police officers                        |                     |
| 12.     | Religious leaders/Community leaders    |                     |
| 13.     | Teachers (under Sarve Shiksha Abhiyan) |                     |
| 14.     | Ward members                           |                     |
| 15.     | Zila Parishad members                  |                     |
| 16.     | Any other (stakeholders)               |                     |

4. **Awareness Generation Activities:**

i. Celebration of special day on Beti Bachao Beti Padhao (every month): **Yes/No**

ii. Information Education and Communication (IEC):

a). IEC materials:

| <b>Sl. No.</b> | <b>Publicity material</b>        | <b>No. of material displayed/distributed</b> |
|----------------|----------------------------------|--|
| 1.             | Banner                           |  |
| 2.             | Brochures                        |  |
| 3.             | Electronic media and print media |  |
| 4.             | Pamphlets/leaflets/handouts      |  |
| 5.             | Posters                          |  |
| 6.             | Wall writing                     |  |
| 7.             | Wall paintings                   |  |

b). IEC activities:

| <b>Sl. No.</b> | <b>Activities</b>                      | <b>No. of activities</b> | <b>No. of participants</b> |
|----------------|--|--------------------------|----------------------------|
| 3.             | Film show                              |                          |                            |
| 4.             | Health camps/Baby show                 |                          |                            |
| 5.             | Miking                                 |                          |                            |
| 6.             | Nukkad Natak/folk art                  |                          |                            |
| 7.             | Prabhat Pherry                         |                          |                            |
| 8.             | Puppet show                            |                          |                            |
| 9.             | Rally                                  |                          |                            |
| 10.            | School Competition                     |                          |                            |
| 11.            | Signature Campaign                     |                          |                            |
| 12.            | Any other (State/Local level activity) |                          |                            |

iii. Celebration of Beti Janmotsav<sup>4</sup> (birth of girl child):

| Sl. No. | Name of the Block | No. of Mothers felicitated | No. of girl child (newly born) felicitated | No. of participants |
|---------|-------------------|----------------------------|--|---------------------|
|         |                   |                            |  |                     |
|         |                   |                            |  |                     |
|         |                   |                            |  |                     |
|         |                   |                            |  |                     |
|         |                   |                            |  |                     |
|         |                   |                            |  |                     |

---

<sup>4</sup> **Beti Janmotsava:** Aims to felicitate girl child and her mother in a large forum at village/ gram Panchayt level/hospital with birth certificate & sweets. This event is to organised on a quarterly basis with the support of District administration and Panchayti Raj along with line departments.

## Part-B

### Ministry of Health and Family Welfare:

#### **I. Promotion of early registration of pregnancy, institutional deliveries and birth registration**

1. Total No. birth registered in a month:
  - a. Boys: \_\_
  - b. Girls: \_\_
  - c. Sex Ratio at Birth: (Girls/ Boys\*1000): \_\_\_\_\_
  
2. Total No. ANC registered in a month:
  - a. Ist Trimester (ANC I) \_\_\_\_\_
  - b. IInd trimester (ANCII) \_\_\_\_\_
  - c. IIIrd Trimester (ANC III) \_\_\_\_\_
  
3. Total No. institutional deliveries :
  - a. Public Institution:
  - b. Private Institution:
  
4. Total no. of domicile Births:

#### **II. Enforcement of PC& PNDT Act**

1. Is District PNDT Cell operational? If yes give staff strength? (*One time*)
2. How many facilities in total are registered under PC&PNDT Act in the districts? (Please *provide category wise details*)
3. How many new registrations were issued under PC&PNDT Act in the last month? Please provide category wise details?
4. How many IVF clinics are registered under the PC&PNDT Act in the district
5. How many court cases are pending and how many convictions are secured under the PC&PNDT Act in the district? (*Please provide details of cases and convictions specifying the provisions of PC&PNDT Act that are contravened*)
6. How many complaints were received and how many cases were filed by the District Appropriate Authority in a month? (*Specifying the provisions of PC&PNDT Act that are contravened*)
7. How many diagnostic facilities/diagnostic equipments (Ultrasound Machine) are sealed? And how many are de-sealed without filling any case under PC&PNDT Act in the court?
8. How many unregistered facilities providing diagnostic services have been identified by means of survey or mapping in the district and what action has been taken there off?
9. Whether medical license of any convicted doctor is suspended/ cancelled in the district?
10. How many diagnostic facilities are submitting records (Form D/E /F/G) every 5<sup>th</sup> of the month to the District Appropriate Authority?
11. Whether the records (Form D/E /F/G) submitted last month to the District Appropriate Authority have been analyzed and scrutinized? If yes please share the findings and action taken there off by the District Appropriate Authority?

12. Whether any inspection and monitoring visit was conducted by NIMC / SIMC? If yes details of the inspection conducted and action taken there off?

**III. Reduction in Gender differential in Child Mortality-Implementation strategy and monitoring:**

Coverage indicator: Immunization /SNCU available

Assessment indicator: SRS

**Part-C**

**Ministry of Human Resource and Development (Department of School Education and Literacy)**

- i. Indicate the number of functional toilets in elementary & secondary school level (Separately for boys & girls):

| Sl. No | Name of the Block | Name of the Gram Panchayat | Name of the School | No. of Functional Toilets |      |
|--------|-------------------|----------------------------|--------------------|---------------------------|------|
|        |                   |                            |                    | Girls                     | Boys |
|        |                   |                            |                    |                           |      |
|        |                   |                            |                    |                           |      |
|        |                   |                            |                    |                           |      |
|        |                   |                            |                    |                           |      |

- ii. Status of School Management Committee in the District:

| Sl. No | Name of the Block | Number of schools | No. of School Management Committee constituted | No. of Committee functional |
|--------|-------------------|-------------------|--|-----------------------------|
|        |                   |                   |  |                             |
|        |                   |                   |  |                             |
|        |                   |                   |  |                             |
|        |                   |                   |  |                             |

- iii. Status of enrolment and drop out in elementary/secondary/senior school level in the District:

| Sl. No | Name of the Block | Number of schools (elementary/secondary/senior school) | % of enrolment in elementary/secondary/senior school | % of drop out in elementary/secondary/senior school |
|--------|-------------------|--|--|---|
|        |                   |  |  |   |
|        |                   |  |  |   |
|        |                   |  |  |   |



iv. Status of girls hostels for secondary and senior secondary schools:

| <b>Sl. No</b> | <b>Name of the Block</b> | <b>No. of secondary and senior secondary school</b> | <b>No. of girls hostel constructed</b> |
|---------------|--------------------------|---|--|
|               |                          |   |  |
|               |                          |   |  |
|               |                          |   |  |
|               |                          |   |  |

v. Number of Kasturba Gandhi Balika Vidyalay (KGBV) set up in the District:

| <b>Sl. No</b> | <b>Name of the Block</b> | <b>No. of secondary and senior secondary school</b> | <b>No. of KGBV functioning</b> |
|---------------|--------------------------|---|--------------------------------|
|               |                          |   |                                |
|               |                          |   |                                |
|               |                          |   |                                |

**Source:** U-DISE (Unified District Information System for Education) for all information related to MoHRD

**DISTRICT LEVEL HALFLY STATEMENT OF EXPENDITURE  
BETI BACHAO BETI PADHAO (BBBP)**

Name of the State/UT/District \_\_\_\_\_

Financial Year \_\_\_\_\_

**PART A:****Form GFR 12-C****Form of Utilization Certificate**

| Sl. No. | Letter No. and Date | Amount |
|---------|---------------------|--------|
|         |                     |        |
|         |                     |        |
|         |                     |        |

Certified that out of Rs. .... of grants-in-aid sanctioned during the year..... in favour of .....Under this Ministry/Department Letter No. given in the margin and Rs..... on account of unspent balance of the previous year, a sum of Rs. .... has been utilized for the purpose of ..... For which it was sanctioned and that the balance of Rs..... remaining unutilized at the end of the year has been surrendered to Government (vide No....., dated .....)/ will be adjusted towards the grants-in-aid payable during the next year .....

2. Certified that I have satisfied myself that the conditions on which the grants-in-aid was sanctioned have been duly fulfilled/are being fulfilled and that I have exercised the following checks to see that the money was actually utilized for the purpose for which it was sanctioned.

Signature .....

Designation .....

Date .....

**PS:** The UC shall disclose separately the actual expenditure incurred and loans and advances given to suppliers of stores and assets, to construction agencies and like accordance with scheme guidelines and in furtherance to the scheme objectives, which do not constitute expenditure at the stage. These shall be treated as utilized grants but allowed to be carried forward.

## **PART B: PHYSICAL**

### **I) District level Activities**

#### **1. Inter-sectoral Consultation & Meetings**

- i) Number of Convergence Meeting held with line departments and other stakeholders :-
- ii) Number of Meetings held of District Task Force (DTF) and Block Task Force(BTF): -
- iii) Number of Media Campaign organized: -

#### **2. A Orientation & sensitization programme**

- i) No. of orientation programme held for District Officers/ Zila Parishad members/ PNDT Cell/Judiciary/ District Legal Services Authority (DLSA) etc:-
- ii) No. of participants attended orientation programme at district level
- iii) No. of orientation programme held for Block Officers/ Block Parishad/ Panchayat members:
- iv) No. of participants attended orientation programme at block level
- v) No. of orientation programme held for Village Health Sanitation & Nutrition Committee (VHSNC) members :-
- vi) No. of participants attended orientation programme for Village Health Sanitation & Nutrition Committee:
- vii) No. of orientation programme held for School Management Committee (SMCs) members:-
- viii) No. of participants attended orientation programme for School Management Committee (SMCs) :-
- ix) No. of sensitization programme organized with Religious leaders, Elected representative and community leaders:-
- x) No. of participants attended the sensitization programme :-

### **B Training & Capacity building**

- i) No. of Training of Administrative, police, judicial, medical colleges and other training academies-LBSNAA, ATIs held:-
- ii) No. of participants attended Training programme:-
- iii) No. of Training of Gender & Girl Child Units held
- iv) No. of participant attended Gender & Girl Child Units training
- v) No. of Training held for Frontline workers-AWWS/ASHAs :-
- vi) No. of Frontline workers participated:-
- vii)No. of Trainings organized for of Youth/Sabla groups/ Volunteer/ SHG/Mahila Mandals/NYKS:-
- viii) No. of Training of District Appropriate Authority (DAA), &

other functionaries on PCPNDT act held:- -----  
-

ix) No. of participants from DAA & other functionaries  
attended training on PCPNDT act:- -----

### 3. Innovation

i) No. of Celebration of Girl Child Day organized:- -----

ii) No. of Celebration of Beti Janmotsava organized:- -----

iii) No. of Programme organized for Incentivising panchayat/  
Urban ward/ frontline worker for adopting best practice:- -----

iv) No. of felicitating programme organized for  
Mother & Girls child in hospitals with sweet and birth  
certificate etc. - -----

v) No. of any other activity identified by DTF/BTF -----

### 4. Awareness generation & Outreach Activities

i) No. of awareness generation and outreach activities  
such as Nukkad Natak/rally/baby show, Celebration of  
Girl Child Day (Fix day in a month) organized:- -----

ii) No. of Naari ki Chaupal/Mann ki Baat across the District held -----

iii) No. of meetings organized with of Village Health Sanitation and  
Nutrition Committee (VHSNC):- -----

iv) Any special Gram Sabha organized on CSR issue: -----

v) No. of Mega Event for Felicitation of best Panchayat  
/Frontline worker organized: -----

vi) No. of Panchayats/Frontline workers awarded for their exemplary  
work:- -----

-

vii) No. meritorious girls in the field of academics/sports  
/culture and social work etc identified:- -----

viii) Details of other activities identified by DTF/BTF  
for awareness generation & Outreach Activities :- -----

### 5. Monitoring and Evaluation, Documentation

i) No. of visits conducted by senior officials-  
a. At Block level :- -----

b. At Village level :- -----

ii) No. of Booklet printed on best practices

iii) Other IEC material Printed -----

### 6. Sectoral activities of Ministry of Human Resource Development (MoHRD)

i) No of award given to School Monitoring Committee (SMC)  
in the district :- -----

ii) No. of Campaigns organized to re-enroll drop-out girls  
in secondary schools through massive joint village contact drive -----

----  
iii) No. of girls re-enrolled during the Campaign organised: - -----

- iv) No. of Balika Manches created to encourage participation of girls: -----
- v) No. of girls participated in Balika Manches: - -----

**7. Sectoral activities of M/O H&FW**

**i) Promotion of early registration of pregnancy, institutional deliveries and birth registration;**

I Total No. birth registered in a month:

- a. Boys: -----
- b. Girls: -----

II Sex Ratio at Birth: (Girls/ Boys\*1000): -----  
-

**ii) Enforcement of PC& PNDT Act:**

- a. No. of facilities are registered under PC&PNDT Act in the districts: - -----
- b. No. of new registrations were issued under PC&PNDT Act in the last month:- -----
- c. No. of unregistered facilities have been identified during the mapping, those were providing diagnostic services in the district: - -----
- d. No. of IVF clinics are registered under the PC&PNDT Act in the district:- -----
- e. How many court cases are pending and how many convictions are secured under the PC&PNDT Act:- -----
- f. No. of complaints were received and how many cases were filed by the District Appropriate Authority:- -----
- g. No. of inspection and monitoring visit was conducted by NIMC / SIMC: - -----
- h. No. of districts PNDT cell strengthened :- -----
- i. No. Innovations, research studies or surveys conducted :- IEC Activities / Capacity building per district: -----  
-

**(ii) PART C: FINANCIAL**

(` In lakhs)

- 1. Funds released during previous financial year by GoI \_\_\_\_\_
- 2. Expenditure incurred in previous financial year \_\_\_\_\_
- 3. (a) Unutilized balance of previous financial year (1-2) \_\_\_\_\_

OR

- (b) Excess expenditure incurred in previous financial year (2-1) \_\_\_\_\_
- 4. Funds released upto previous half year in current year by GoI \_\_\_\_\_
- 5. Funds released during the current half year by GoI \_\_\_\_\_  
(Sanction Order No. \_\_\_\_\_ Date: \_\_\_\_\_)
- 6. Cumulative release during the year (4+ 5) \_\_\_\_\_
- 7. Net Central funds available (6 + 3(a) OR  
6 – (b) as the case may be) \_\_\_\_\_

**8. Expenditure incurred during the Quarter (` in lakhs)**

**(a) District Level**

|   | <b>Cumulative up to</b> |       |       |       |                    |       |       |       |
|---|-------------------------|-------|-------|-------|--------------------|-------|-------|-------|
|   | <b>In Quarter</b>       |       |       |       | <b>the Quarter</b> |       |       |       |
|   | I/                      | II/   | III/  | IV    | I/                 | II/   | III/  | IV    |
| 1. (i) Inter-sectoral Consultation & Meetings of DTF & BTF and Media Campaign (ii) Training & Capacity building/sensitization programme | -----                   | ----- | ----- | ----- | -----              | ----- | ----- | ----- |
| 2. Innovation and Outreach Activities   | -----                   | ----- | ----- | ----- | -----              | ----- | ----- | ----- |
| 3. Monitoring, Evaluation and Documentation   | -----                   | ----- | ----- | ----- | -----              | ----- | ----- | ----- |
| 4. Sectoral activities of M/O HRD :   | -----                   | ----- | ----- | ----- | -----              | ----- | ----- | ----- |
| 5. Sectoral activities of M/O H&FW:   | -----                   | ----- | ----- | ----- | -----              | ----- | ----- | ----- |
| 6. Activities carried, if any out of the Flexi Fund:  | -----                   | ----- | ----- | ----- | -----              | ----- | ----- | ----- |
| <b>Total</b>  | -----                   | ----- | ----- | ----- | -----              | ----- | ----- | ----- |
| <b>9</b> Utilization Funds ( 7-8 (a)) :   | -----                   | ----- | ----- | ----- | -----              | ----- | ----- | ----- |
| <b>10.</b> Saving, if any along with reasons:   | -----                   | ----- | ----- | ----- | -----              | ----- | ----- | ----- |



*The logo above symbolizes the rights, hopes and aspirations of the girl child for a life of dignity and equality*

**Ministry of Women & Child Development  
Government of India  
New Delhi  
[www.wcd.nic.in](http://www.wcd.nic.in)**